

For Research Use Only

# SLC25A6-Specific Polyclonal ANTIBODY



Catalog Number: 14841-1-AP **3 Publications**

## Basic Information

**Catalog Number:**

14841-1-AP

**Size:**

150UL, Concentration: 273 µg/ml by Bradford method using BSA as the standard;

**Source:**

Rabbit

**Isotype:**

IgG

**GenBank Accession Number:**

NM\_001636

**GeneID (NCBI):**

293

**Full Name:**

solute carrier family 25 (mitochondrial carrier; adenine nucleotide translocator), member 6

**Calculated MW:**

33 kDa

**Observed MW:**

33 kDa

**Purification Method:**

Antigen affinity purification

**Recommended Dilutions:**

WB 1:500-1:1000

IP 0.5-4.0 µg for IP and 1:500-1:1000 for WB

IHC 1:20-1:200

IF 1:10-1:100

## Applications

**Tested Applications:**

IF, IHC, IP, WB, ELISA

**Cited Applications:**

WB

**Species Specificity:**

human, mouse

**Cited Species:**

human

**Note-IHC: suggested antigen retrieval with TE buffer pH 9.0; (\*) Alternatively, antigen retrieval may be performed with citrate buffer pH 6.0**

**Positive Controls:**

**WB:** L02 cells, human heart tissue, human liver tissue

**IP:** mouse liver tissue,

**IHC:** human skeletal muscle tissue, human heart tissue, human kidney tissue, human liver tissue

**IF:** HepG2 cells, MCF-7 cells

## Background Information

### Notable Publications

Author	Pubmed ID	Journal	Application
Ridhima Gomkale	32142709	Curr Biol	WB
Sylvie Callegari	27718247	FEBS Lett	WB
David Pacheu-Grau	30452684	Hum Mol Genet	WB

## Storage

**Storage:**

Store at -20°C. Stable for one year after shipment.

**Storage Buffer:**

PBS with 0.02% sodium azide and 50% glycerol pH 7.3.

Aliquoting is unnecessary for -20°C storage

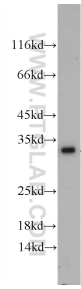
For technical support and original validation data for this product please contact:

T: 1 (888) 4PTGLAB (1-888-478-4522) (toll free in USA), or 1(312) 455-8498 (outside USA)

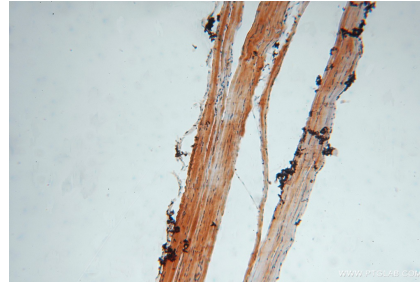
E: proteintech@ptglab.com  
W: ptglab.com

**This product is exclusively available under Proteintech Group brand and is not available to purchase from any other manufacturer.**

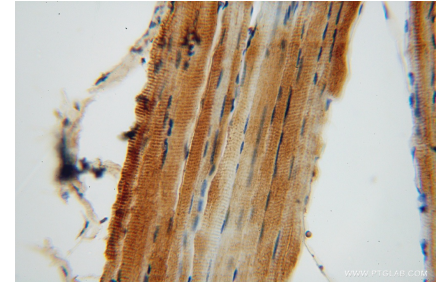
## Selected Validation Data



L02 cells were subjected to SDS PAGE followed by western blot with 14841-1-AP (SLC25A6-Specific antibody) at dilution of 1:500 incubated at room temperature for 1.5 hours.



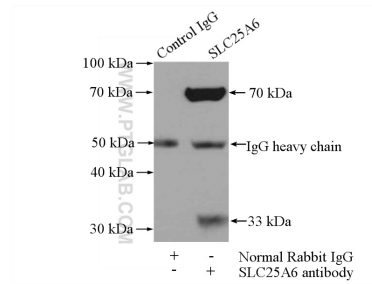
Immunohistochemical analysis of paraffin-embedded human skeletal muscle using 14841-1-AP (SLC25A6-Specific antibody) at dilution of 1:100 (under 10x lens).



Immunohistochemical analysis of paraffin-embedded human skeletal muscle using 14841-1-AP (SLC25A6-Specific antibody) at dilution of 1:100 (under 40x lens).



Immunofluorescent analysis of HepG2 cells using 14841-1-AP (SLC25A6-Specific antibody) at dilution of 1:25 and Rhodamine-Goat anti-Rabbit IgG.



IP Result of anti-SLC25A6-Specific (IP:14841-1-AP, 4ug; Detection:14841-1-AP 1:500) with mouse liver tissue lysate 4000ug.