

For Research Use Only

# Collagen Type VI Polyclonal antibody



Catalog Number: 14853-1-AP

4 Publications

## Basic Information

**Catalog Number:**

14853-1-AP

**Size:**

150ul , Concentration: 500 µg/ml by Nanodrop and 267 µg/ml by Bradford method using BSA as the standard;

**Source:**

Rabbit

**Isotype:**

IgG

**Immunogen Catalog Number:**

AG6635

**GenBank Accession Number:**

BC065509

**GeneID (NCBI):**

1292

**Full Name:**

collagen, type VI, alpha 2

**Calculated MW:**

109 kDa

**Observed MW:**

140 kDa

**Purification Method:**

Antigen affinity purification

**Recommended Dilutions:**

WB 1:1000-1:4000

## Applications

**Tested Applications:**

WB,ELISA

**Cited Applications:**

IF, IHC, WB

**Species Specificity:**

human, pig

**Cited Species:**

human

**Positive Controls:**

WB : human placenta tissue, pig skin tissue, human heart tissue

## Background Information

Collagen VI, composed of three polypeptides, alpha-1(VI), alpha-2(VI), and alpha-3(VI) chains, is a beaded filament collagen found in most connective tissues. The alpha-1(VI) and alpha-2(VI) chains are 140 kDa, while the alpha-3(VI) chain is 200-300 kDa (PMID: 3792302, 3348212). COL6A2 gene encodes the alpha-2 subunit of type VI collagen. The alpha-2(VI) subunit has a calculated molecular weight of 109 kDa, and an apparent molecular weight of 140 kDa due to posttranslational modification. Mutations in COL6A2 gene are associated with Bethlem myopathy and Ullrich scleroatonic muscular dystrophy. Three transcript variants have been identified for this gene.

## Notable Publications

Author	Pubmed ID	Journal	Application
Naomi A Carne	30890563	Mol Cell Proteomics	WB
Jamie Endicott	28755659	BMC Res Notes	WB,IF
He Wang	30556904	J Cell Physiol	WB,IHC

## Storage

**Storage:**

Store at -20°C. Stable for one year after shipment.

**Storage Buffer:**

PBS with 0.02% sodium azide and 50% glycerol pH 7.3.

Aliquoting is unnecessary for -20°C storage

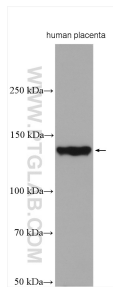
For technical support and original validation data for this product please contact:

T: 1 (888) 4PTGLAB (1-888-478-4522) (toll free in USA), or 1(312) 455-8498 (outside USA)

E: [proteintech@ptglab.com](mailto:proteintech@ptglab.com)  
W: [ptglab.com](http://ptglab.com)

**This product is exclusively available under Proteintech Group brand and is not available to purchase from any other manufacturer.**

## Selected Validation Data



human placenta tissue were subjected to SDS PAGE followed by western blot with 14853-1-AP (Collagen Type VI antibody) at dilution of 1:4000 incubated at room temperature for 1.5 hours.