

For Research Use Only

SYK Polyclonal antibody

Catalog Number: 14858-1-AP

Featured Product



Basic Information

Catalog Number:

14858-1-AP

Size:

150ul , Concentration: 433 µg/ml by Bradford method using BSA as the standard;

Source:

Rabbit

Isotype:

IgG

Immunogen Catalog Number:

AG6657

GenBank Accession Number:

BC001645

GeneID (NCBI):

6850

Full Name:

spleen tyrosine kinase

Calculated MW:

72 kDa

Observed MW:

65-72 kDa

Purification Method:

Antigen affinity purification

Recommended Dilutions:

WB 1:500-1:3000

IHC 1:50-1:500

Applications

Tested Applications:

IHC, WB, ELISA

Species Specificity:

human, mouse, rat

Note-IHC: suggested antigen retrieval with TE buffer pH 9.0; (*) Alternatively, antigen retrieval may be performed with citrate buffer pH 6.0

Positive Controls:

WB : Daudi cells, Raji cells, Ramos cells

IHC : human spleen tissue, human kidney tissue, human ovary tissue, human appendicitis tissue

Background Information

SYK belongs to the protein kinase superfamily, Tyr protein kinase family and SYK/ZAP-70 subfamily. It is positive effector of BCR-stimulated responses. SYK couples the B-cell antigen receptor (BCR) to the mobilization of calcium ion either through a phosphoinositide 3-kinase-dependent pathway, when not phosphorylated on tyrosines of the linker region, or through a phospholipase C-gamma-dependent pathway. It phosphorylates USP25 and regulates its intracellular levels.

Storage

Storage:

Store at -20°C. Stable for one year after shipment.

Storage Buffer:

PBS with 0.02% sodium azide and 50% glycerol pH 7.3.

Aliquoting is unnecessary for -20°C storage

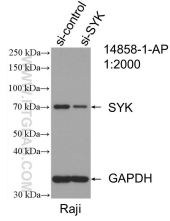
For technical support and original validation data for this product please contact:

T: 1 (888) 4PTGLAB (1-888-478-4522) (toll free in USA), or 1(312) 455-8498 (outside USA)

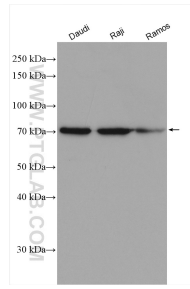
E: proteintech@ptglab.com
W: ptglab.com

This product is exclusively available under Proteintech Group brand and is not available to purchase from any other manufacturer.

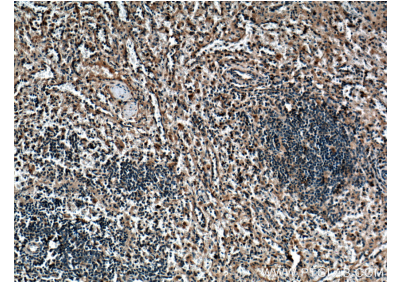
Selected Validation Data



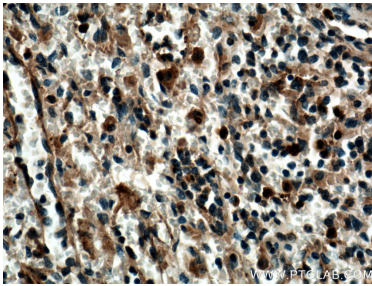
WB result of SYK antibody (14858-1-AP; 1:2000; incubated at room temperature for 1.5 hours) with sh-Control and sh-SYK transfected Raji cells.



Various lysates were subjected to SDS PAGE followed by western blot with 14858-1-AP (SYK antibody) at dilution of 1:1500 incubated at room temperature for 1.5 hours.



Immunohistochemical analysis of paraffin-embedded human spleen tissue slide using 14858-1-AP (SYK antibody) at dilution of 1:200 (under 10x lens). Heat mediated antigen retrieval with Tris-EDTA buffer (pH 9.0).



Immunohistochemical analysis of paraffin-embedded human spleen tissue slide using 14858-1-AP (SYK antibody) at dilution of 1:200 (under 40x lens). Heat mediated antigen retrieval with Tris-EDTA buffer (pH 9.0).