

For Research Use Only

MCCC1 Polyclonal antibody

Catalog Number: 14861-1-AP

3 Publications



Basic Information

Catalog Number:

14861-1-AP

Size:

150ul, Concentration: 1000 ug/ml by Nanodrop;

Source:

Rabbit

Isotype:

IgG

Immunogen Catalog Number:

AG6663

GenBank Accession Number:

BC004187

GeneID (NCBI):

56922

UNIPROT ID:

Q96RQ3

Full Name:

methylcrotonoyl-Coenzyme A carboxylase 1 (alpha)

Calculated MW:

76 kDa

Observed MW:

70-76 kDa

Purification Method:

Antigen affinity purification

Recommended Dilutions:

WB: 1:500-1:2400

IP: 0.5-4.0 ug for 1.0-3.0 mg of total protein lysate

IHC: 1:20-1:200

Applications

Tested Applications:

WB, IP, IHC, ELISA

Cited Applications:

WB, IHC

Species Specificity:

human, mouse, rat

Cited Species:

human, mouse

Note-IHC: suggested antigen retrieval with TE buffer pH 9.0; (*) Alternatively, antigen retrieval may be performed with citrate buffer pH 6.0

Positive Controls:

WB: mouse liver tissue, mouse heart tissue

IP: mouse liver tissue,

IHC: human liver cancer tissue,

Background Information

MCCC1 is the large subunit of 3-methylcrotonyl-CoA carboxylase. This enzyme functions as a heterodimer and catalyzes the carboxylation of 3-methylcrotonyl-CoA to form 3-methylglutaconyl-CoA. Mutations in this gene are associated with 3-Methylcrotonylglycinuria, an autosomal recessive disorder of leucine catabolism.

Notable Publications

Author	Pubmed ID	Journal	Application
Haixin Li	31068703	Nat Med	IHC
Olga Gourdomichali	35205152	Biology (Basel)	WB
Yu Feng	37805164	Life Sci	WB, IHC

Storage

Storage:

Store at -20°C. Stable for one year after shipment.

Storage Buffer:

PBS with 0.02% sodium azide and 50% glycerol, pH7.3

Aliquoting is unnecessary for -20°C storage

*** 20ul sizes contain 0.1% BSA

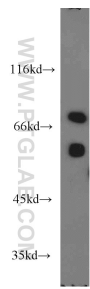
For technical support and original validation data for this product please contact:

T: 1 (888) 4PTGLAB (1-888-478-4522) (toll free in USA), or 1(312) 455-8498 (outside USA)

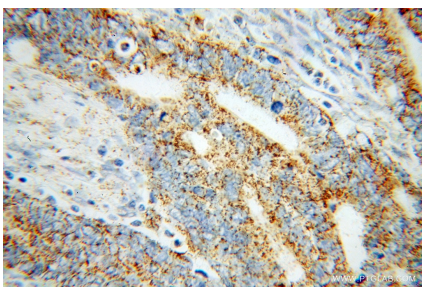
E: proteintech@ptglab.com
W: ptglab.com

This product is exclusively available under Proteintech Group brand and is not available to purchase from any other manufacturer.

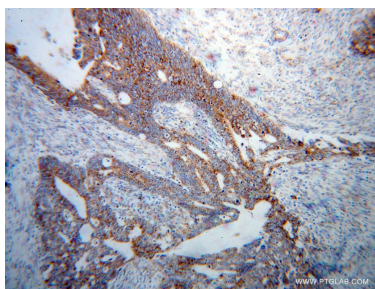
Selected Validation Data



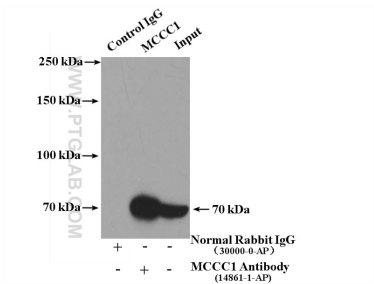
mouse liver tissue were subjected to SDS PAGE followed by western blot with 14861-1-AP (MCCC1 antibody) at dilution of 1:1200 incubated at room temperature for 1.5 hours.



Immunohistochemical analysis of paraffin-embedded human liver cancer using 14861-1-AP (MCCC1 antibody) at dilution of 1:100 (under 40x lens).



Immunohistochemical analysis of paraffin-embedded human liver cancer using 14861-1-AP (MCCC1 antibody) at dilution of 1:100 (under 10x lens).



IP result of anti-MCCC1 (IP:14861-1-AP, 4ug; Detection:14861-1-AP 1:1000) with mouse liver tissue lysate 6000ug.