

For Research Use Only

BTG1 Polyclonal ANTIBODY



Catalog Number: 14879-1-AP **5 Publications**

Basic Information

| | | |
|---|--|--|
| Catalog Number: 14879-1-AP | GenBank Accession Number: BC064953 | Purification Method: Antigen affinity purification |
| Size: 150UL, Concentration: 300 µg/ml by Bradford method using BSA as the standard; | GeneID (NCBI): 694 | Recommended Dilutions: IHC 1:50-1:500 |
| Source: Rabbit | Full Name: B-cell translocation gene 1, anti-proliferative | |
| Isotype: IgG | Calculated MW: 19 kDa | |
| Immunogen Catalog Number: AG6651 | | |

Applications

| | |
|--|---|
| Tested Applications: IHC, ELISA | Positive Controls: IHC : human thyroid cancer tissue, human lymphoma tissue |
| Cited Applications: IF, IHC, WB | |
| Species Specificity: human, mouse, rat | |
| Cited Species: HUMAN, mouse | |
| Note-IHC: suggested antigen retrieval with TE buffer pH 9.0; (*) Alternatively, antigen retrieval may be performed with citrate buffer pH 6.0 | |

Background Information

BTG1 is a member of the TOB/BTG family of proteins known to inhibit cell proliferation and negatively regulate the cell cycle (PMID: 25017022). It is strongly expressed in quiescent cells (maximal in the G0/G1 phase) and down-regulated as the cells enter the growth cycle (PMID: 1373383). BTG1 protein is localized in cytoplasm and nucleus, and can interact with CAF1 and PRMT1 (PMID: 1113675, 9712883, 26622543). The aberration of BTG1 expression is associated with B-cell lymphocytic leukemia, and may serve as a diagnostic indicator and prognostic marker of thyroid carcinoma (PMID: 2069907, 25017022).

Notable Publications

| Author | Pubmed ID | Journal | Application |
|------------|-----------|---------------|-------------|
| Yang Zhao | 24084718 | Int J Mol Sci | |
| Chang Su | 31452761 | Oncol Lett | WB |
| Guogui Sun | 25571854 | Int J Mol Med | |

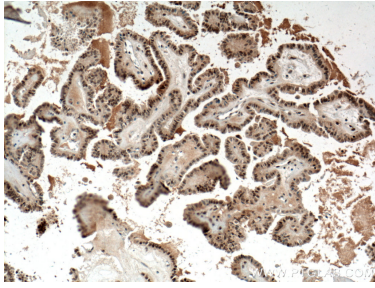
Storage

Storage:
Store at -20°C. Stable for one year after shipment.
Storage Buffer:
PBS with 0.02% sodium azide and 50% glycerol pH 7.3.
Aliquoting is unnecessary for -20°C storage

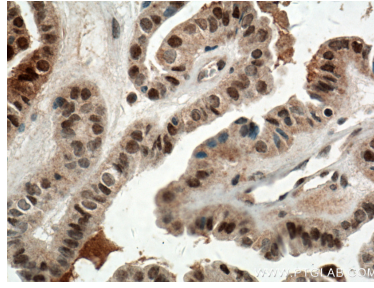
For technical support and original validation data for this product please contact:
T: 1 (888) 4PTGLAB (1-888-478-4522) (toll free in USA), or 1(312) 455-8498 (outside USA)
E: proteintech@ptglab.com
W: ptglab.com

This product is exclusively available under Proteintech Group brand and is not available to purchase from any other manufacturer.

Selected Validation Data



Immunohistochemical analysis of paraffin-embedded human thyroid cancer tissue slide using 14879-1-AP (BTG1 antibody) at dilution of 1:200 (under 10x lens. Heat mediated antigen retrieval with Tris-EDTA buffer (pH 9.0)).



Immunohistochemical analysis of paraffin-embedded human thyroid cancer tissue slide using 14879-1-AP (BTG1 antibody) at dilution of 1:200 (under 40x lens. Heat mediated antigen retrieval with Tris-EDTA buffer (pH 9.0)).