

For Research Use Only

RBX1 Polyclonal ANTIBODY



Catalog Number: 14895-1-AP

3 Publications

Basic Information

Catalog Number:
14895-1-AP

Size:
21 µg/150 µl

Source:
Rabbit

Isotype:
IgG

Purification Method:
Antigen affinity purification

Immunogen Catalog Number:
AC6685

GenBank Accession Number:
BC001466

GeneID (NCBI):
9978

Full Name:
ring-box 1

Calculated MW:
12 kDa

Observed MW:
12 kDa

Recommended Dilutions:

WB 1:500-1:2000

IP 0.5-4.0 µg for IP and 1:500-1:1000 for WB

IHC 1:50-1:500

Applications

Tested Applications:

IHC, IP, WB, ELISA

Cited Applications:

IF, WB

Species Specificity:

human,mouse,rat

Cited Species:

human, mitten crabs

Note: suggested antigen retrieval with TE buffer pH 9.0; (*) Alternatively, antigen retrieval may be performed with citrate buffer pH 6.0

Positive Controls:

WB : HeLa cells;

IP : HeLa cells;

IHC : human heart tissue;

Background Information

RBX1(RING-box protein 1) is also named as RNF75, RCC1 and is a requisite component of the multi- subunit SCF family E3s36-40. It mediates the ubiquitination and subsequent proteasomal degradation of target proteins, including proteins involved in cell cycle progression, signal transduction, transcription and transcription-coupled nucleotide excision repair.

Notable Publications

Author	Pubmed ID	Journal	Application
Jia-Shun Zhang	29775751	Gene	WB,IF
Pin Wan	30653357	FASEB J	WB
Xi Chen	27906182	Cell Death Dis	WB

Storage

Storage:

Store at -20°C. Stable for one year after shipment.

Storage Buffer:

PBS with 0.02% sodium azide and 50% glycerol pH 7.3.

Aliquoting is unnecessary for -20°C storage

For technical support and original validation data for this product please contact:

T: 1 (888) 4PTGLAB (1-888-478-4522) (toll free in USA), or 1(312) 455-8498 (outside USA)

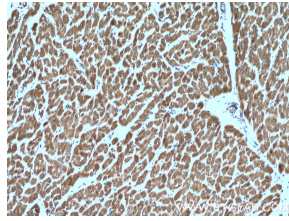
E: proteintech@ptglab.com
W: ptglab.com

This product is exclusively available under Proteintech Group brand and is not available to purchase from any other manufacturer.

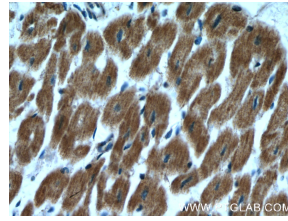
Selected Validation Data



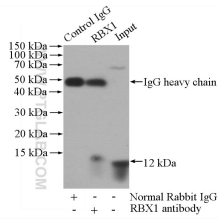
HeLa cells were subjected to SDS PAGE followed by western blot with 14895-1-AP(RBX1 antibody) at dilution of 1:500 incubated at room temperature for 1.5 hours



Immunohistochemistry of paraffin-embedded human heart tissue slide using 14895-1-AP(RBX1 antibody) at dilution of 1:200 (under 10x lens).



Immunohistochemistry of paraffin-embedded human heart tissue slide using 14895-1-AP(RBX1 antibody) at dilution of 1:200 (under 40x lens).



IP Result of anti-RBX1 (IP:14895-1-AP, 4ug; Detection: 14895-1-AP 1:500) with HeLa cells lysate 1520ug.