

For Research Use Only

# PSME3 Polyclonal antibody

Catalog Number: 14907-1-AP **3 Publications**



## Basic Information

<b>Catalog Number:</b> 14907-1-AP	<b>GenBank Accession Number:</b> BC001423	<b>Purification Method:</b> Antigen affinity purification
<b>Size:</b> 150ul , Concentration: 450 µg/ml by Nanodrop and 133 µg/ml by Bradford method using BSA as the standard;	<b>GeneID (NCBI):</b> 10197	<b>Recommended Dilutions:</b> WB 1:500-1:2000 IP 0.5-4.0 ug for IP and 1:500-1:1000 for WB
<b>Source:</b> Rabbit	<b>Full Name:</b> proteasome (prosome, macropain) activator subunit 3 (PA28 gamma; Ki)	<b>IHC 1:50-1:500</b> <b>IF 1:10-1:100</b>
<b>Isotype:</b> IgG	<b>Calculated MW:</b> 30 kDa	
<b>Immunogen Catalog Number:</b> AG6702	<b>Observed MW:</b> 30 kDa	

## Applications

<b>Tested Applications:</b> IF, IHC, IP, WB, ELISA	<b>Positive Controls:</b> WB : COLO 320 cells, mouse spleen tissue
<b>Cited Applications:</b> IHC, WB	<b>IP :</b> COLO 320 cells,
<b>Species Specificity:</b> human, mouse, rat	<b>IHC :</b> human kidney tissue,
<b>Cited Species:</b> human	<b>IF :</b> HepG2 cells,

**Note-IHC: suggested antigen retrieval with TE buffer pH 9.0; (\*) Alternatively, antigen retrieval may be performed with citrate buffer pH 6.0**

## Background Information

PSME3 gene encodes proteasome activator complex subunit 3, which is also called REG-gamma or PA28-gamma. REG-gamma activates the trypsin-like catalytic subunit of the proteasome thus is a proteasome regulator. MDM2-TP53 interaction which promotes ubiquitination- and MDM2-dependent proteasomal degradation of TP53, may be promoted by REG-gamma resulting in inhibited apoptosis after DNA damage. REG-gamma may also be involved in cell cycle regulation.

## Notable Publications

Author	Pubmed ID	Journal	Application
Jiefang Guo	27756569	Cancer Lett	WB,IHC
Doueiri Rami R	22876852	Retrovirology	WB
Zhiqiang Yin	32328351	PeerJ	WB,IHC

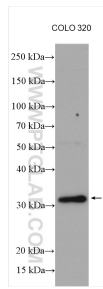
## Storage

**Storage:**  
Store at -20°C. Stable for one year after shipment.  
**Storage Buffer:**  
PBS with 0.02% sodium azide and 50% glycerol pH 7.3.  
Aliquoting is unnecessary for -20°C storage

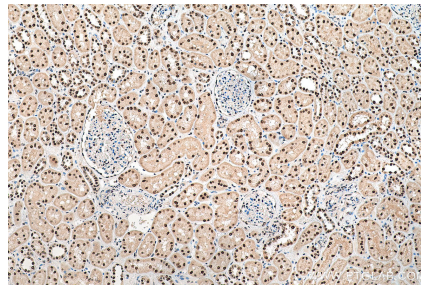
For technical support and original validation data for this product please contact:  
T: 1 (888) 4PTGLAB (1-888-478-4522) (toll free in USA), or 1(312) 455-8498 (outside USA)  
E: proteintech@ptglab.com  
W: ptglab.com

**This product is exclusively available under Proteintech Group brand and is not available to purchase from any other manufacturer.**

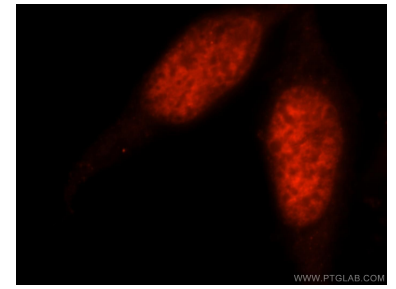
## Selected Validation Data



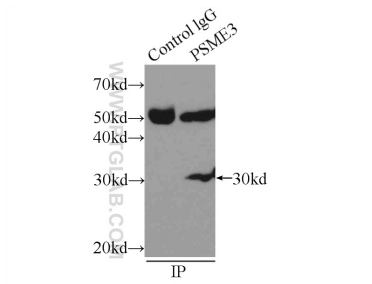
COLO 320 cells were subjected to SDS PAGE followed by western blot with 14907-1-AP (PSME3 antibody) at dilution of 1:1000 incubated at room temperature for 1.5 hours.



Immunohistochemical analysis of paraffin-embedded human kidney tissue slide using 14907-1-AP (PSME3 antibody) at dilution of 1:200 (under 10x lens). Heat mediated antigen retrieval with Tris-EDTA buffer (pH 9.0).



Immunofluorescent analysis of HepG2 cells, using PSME3 antibody 14907-1-AP at 1:25 dilution and Rhodamine-labeled goat anti-rabbit IgG (red).



IP Result of anti-PSME3 (IP:14907-1-AP, 3ug; Detection:14907-1-AP 1:500) with COLO 320 cells lysate 2000ug.