

For Research Use Only

# THUMPD1 Polyclonal ANTIBODY



Catalog Number: 14921-1-AP

## Basic Information

**Catalog Number:**

14921-1-AP

**Size:**

150UL, Concentration: 153 µg/ml by Bradford method using BSA as the standard;

**Source:**

Rabbit

**Isotype:**

IgG

**Immunogen Catalog Number:**

AG6739

**GenBank Accession Number:**

BC000448

**GeneID (NCBI):**

55623

**Full Name:**

THUMP domain containing 1

**Calculated MW:**

39 kDa

**Observed MW:**

49 kDa

**Purification Method:**

Antigen affinity purification

**Recommended Dilutions:**

WB 1:500-1:1000

IHC 1:50-1:500

IF 1:50-1:500

## Applications

**Tested Applications:**

IF, IHC, WB, ELISA

**Species Specificity:**

human, mouse, rat

**Note-IHC: suggested antigen retrieval with TE buffer pH 9.0; (\*) Alternatively, antigen retrieval may be performed with citrate buffer pH 6.0**

**Positive Controls:**

WB: MCF7 cells, K-562 cells, MCF-7 cells

IHC: human breast cancer tissue,

IF: MCF-7 cells,

## Background Information

### Storage

**Storage:**

Store at -20°C. Stable for one year after shipment.

**Storage Buffer:**

PBS with 0.02% sodium azide and 50% glycerol pH 7.3.

Aliquoting is unnecessary for -20°C storage

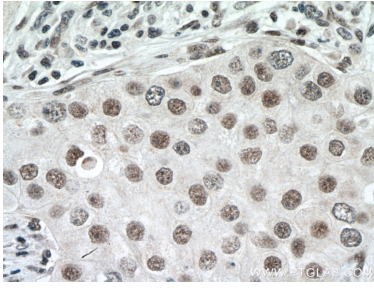
For technical support and original validation data for this product please contact:

T: 1 (888) 4PTGLAB (1-888-478-4522) (toll free in USA), or 1(312) 455-8498 (outside USA)

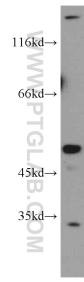
E: [proteintech@ptglab.com](mailto:proteintech@ptglab.com)  
W: [ptglab.com](http://ptglab.com)

This product is exclusively available under Proteintech Group brand and is not available to purchase from any other manufacturer.

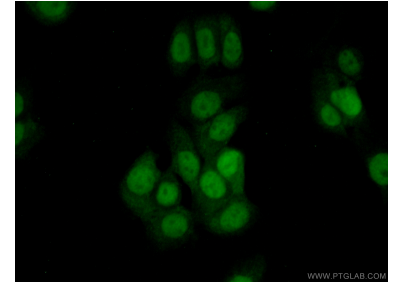
## Selected Validation Data



Immunohistochemical analysis of paraffin-embedded human breast cancer tissue slide using 14921-1-AP (THUMPD1 antibody) at dilution of 1:200 (under 40x lens. Heat mediated antigen retrieval with Tris-EDTA buffer (pH 9.0).



MCF7 cells were subjected to SDS PAGE followed by western blot with 14921-1-AP (THUMPD1 antibody) at dilution of 1:1000 incubated at room temperature for 1.5 hours.



Immunofluorescent analysis of (10% Formaldehyde) fixed MCF-7 cells using 14921-1-AP (THUMPD1 antibody) at dilution of 1:50 and Alexa Fluor 488-conjugated AffiniPure Goat Anti-Rabbit IgG(H+L).