

For Research Use Only

# RPS15 Polyclonal antibody

Catalog Number: 14957-1-AP **4 Publications**



## Basic Information

<b>Catalog Number:</b> 14957-1-AP	<b>GenBank Accession Number:</b> BC064908	<b>Purification Method:</b> Antigen affinity purification
<b>Size:</b> 150ul , Concentration: 400 µg/ml by Nanodrop and 200 µg/ml by Bradford method using BSA as the standard;	<b>GeneID (NCBI):</b> 6209	<b>Recommended Dilutions:</b> WB 1:500-1:2400 IHC 1:20-1:200 IF 1:20-1:200
<b>Source:</b> Rabbit	<b>Full Name:</b> ribosomal protein S15	
<b>Isotype:</b> IgG	<b>Calculated MW:</b> 17 kDa	
<b>Immunogen Catalog Number:</b> AG6795	<b>Observed MW:</b> 17 kDa	

## Applications

<b>Tested Applications:</b> IF, IHC, WB, ELISA	<b>Positive Controls:</b> WB : human liver tissue, HeLa cells, L02 cells, mouse brain tissue, mouse liver tissue IHC : human liver cancer tissue, IF : HeLa cells,
<b>Cited Applications:</b> WB	
<b>Species Specificity:</b> human, mouse, rat	
<b>Cited Species:</b> human	
<b>Note-IHC: suggested antigen retrieval with TE buffer pH 9.0; (*) Alternatively, antigen retrieval may be performed with citrate buffer pH 6.0</b>	

## Background Information

RPS15, also named as RIG protein or Small ribosomal subunit protein uS19, is a 145 amino acid protein, which belongs to the universal ribosomal protein uS19 family. RPS15 is a ribosomal small subunit assembly and involved in nuclear-transcribed mRNA catabolic process, nonsense-mediated decay.

## Notable Publications

Author	Pubmed ID	Journal	Application
Long Jiang	28502657	Curr Biol	WB
Kehui Xiang	34213414	Elife	WB
Diego Acosta-Alvear	30582518	Elife	WB

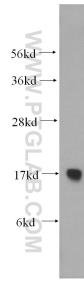
## Storage

**Storage:**  
Store at -20°C. Stable for one year after shipment.  
**Storage Buffer:**  
PBS with 0.02% sodium azide and 50% glycerol pH 7.3.  
Aliquoting is unnecessary for -20°C storage

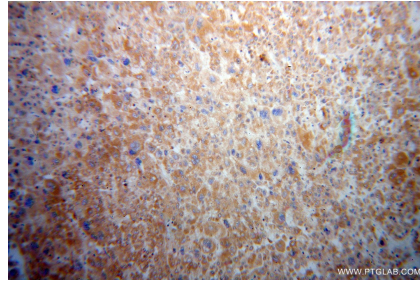
For technical support and original validation data for this product please contact:  
T: 1 (888) 4PTGLAB (1-888-478-4522) (toll free in USA), or 1(312) 455-8498 (outside USA)  
E: proteintech@ptglab.com  
W: ptglab.com

**This product is exclusively available under Proteintech Group brand and is not available to purchase from any other manufacturer.**

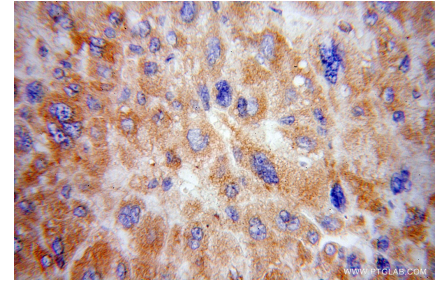
## Selected Validation Data



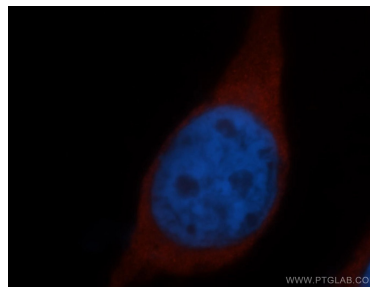
human liver tissue were subjected to SDS PAGE followed by western blot with 14957-1-AP (RPS15 antibody) at dilution of 1:500 incubated at room temperature for 1.5 hours.



Immunohistochemical analysis of paraffin-embedded human liver cancer using 14957-1-AP (RPS15 antibody) at dilution of 1:100 (under 10x lens).



Immunohistochemical analysis of paraffin-embedded human liver cancer using 14957-1-AP (RPS15 antibody) at dilution of 1:100 (under 40x lens).



Immunofluorescent analysis of HeLa cells, using RPS15 antibody 14957-1-AP at 1:50 dilution and Rhodamine-labeled goat anti-rabbit IgG (red). Blue pseudocolor = DAPI (fluorescent DNA dye).