

For Research Use Only

PABPC4 Polyclonal antibody

Catalog Number: 14960-1-AP

Featured Product

3 Publications



Basic Information

Catalog Number:

14960-1-AP

Size:

150ul , Concentration: 500 µg/ml by Nanodrop and 333 µg/ml by Bradford method using BSA as the standard;

Source:

Rabbit

Isotype:

IgG

Immunogen Catalog Number:

AG6813

GenBank Accession Number:

BC065540

GeneID (NCBI):

8761

Full Name:

poly(A) binding protein, cytoplasmic 4 (inducible form)

Calculated MW:

70 kDa

Observed MW:

70-71 kDa

Purification Method:

Antigen affinity purification

Recommended Dilutions:

WB 1:500-1:2000

IP 0.5-4.0 ug for IP and 1:500-1:1000 for WB

IHC 1:20-1:200

IF 1:20-1:200

Applications

Tested Applications:

IF, IHC, IP, WB, ELISA

Cited Applications:

IP, WB

Species Specificity:

human, mouse, rat

Cited Species:

human

Note-IHC: suggested antigen retrieval with TE buffer pH 9.0; (*) Alternatively, antigen retrieval may be performed with citrate buffer pH 6.0

Positive Controls:

WB : mouse heart tissue, human brain tissue, Jurkat cells

IP : mouse heart tissue,

IHC : human gliomas tissue,

IF : HeLa cells, Ethacrynic acid treated HepG2 cells

Background Information

Notable Publications

Author	Pubmed ID	Journal	Application
Evan P Booy	30247708	Nucleic Acids Res	WB,IP
Xiaotong Sun	30404616	BMC Pregnancy Childbirth	WB
Adi Rechtes	27194785	J Immunol	WB

Storage

Storage:

Store at -20°C. Stable for one year after shipment.

Storage Buffer:

PBS with 0.02% sodium azide and 50% glycerol pH 7.3.

Aliquoting is unnecessary for -20°C storage

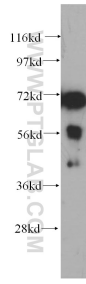
For technical support and original validation data for this product please contact:

T: 1 (888) 4PTGLAB (1-888-478-4522) (toll free in USA), or 1(312) 455-8498 (outside USA)

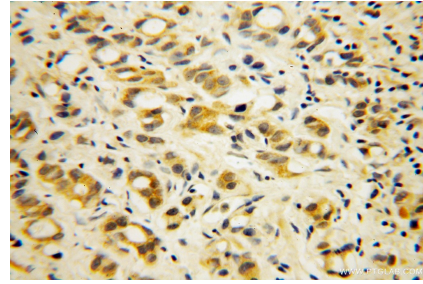
E: proteintech@ptglab.com
W: ptglab.com

This product is exclusively available under Proteintech Group brand and is not available to purchase from any other manufacturer.

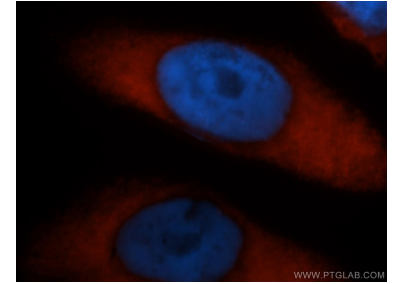
Selected Validation Data



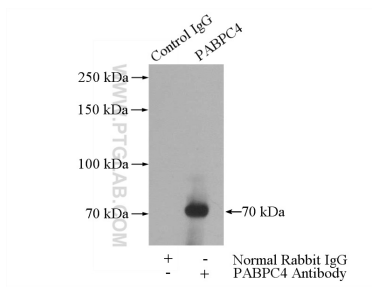
mouse heart tissue were subjected to SDS PAGE followed by western blot with 14960-1-AP (PABPC4 antibody) at dilution of 1:400 incubated at room temperature for 1.5 hours.



Immunohistochemical analysis of paraffin-embedded human gliomas using 14960-1-AP (PABPC4 antibody) at dilution of 1:50 (under 40x lens).



Immunofluorescent analysis of HeLa cells, using PABPC4 antibody 14960-1-AP at 1:50 dilution and Rhodamine-labeled goat anti-rabbit IgG (red). Blue pseudocolor = DAPI (fluorescent DNA dye).



IP Result of anti-PABPC4 (IP:14960-1-AP, 4ug; Detection:14960-1-AP 1:500) with mouse heart tissue lysate 4000ug.