

For Research Use Only

Chromogranin B Polyclonal antibody

Catalog Number: 14968-1-AP

Featured Product

10 Publications



Basic Information

Catalog Number:

14968-1-AP

Size:

150ul, Concentration: 400 ug/ml by Nanodrop;

Source:

Rabbit

Isotype:

IgG

Immunogen Catalog Number:

AG6833

GenBank Accession Number:

BC000375

GeneID (NCBI):

1114

UNIPROT ID:

P05060

Full Name:

chromogranin B (secretogranin 1)

Calculated MW:

78 kDa

Observed MW:

70-100 kDa

Purification Method:

Antigen affinity purification

Recommended Dilutions:

WB 1:1000-1:4000

IHC 1:20-1:200

IF-P 1:50-1:500

IF-Fro 1:50-1:500

Applications

Tested Applications:

WB, IHC, IF-P, IF-Fro, FC (Intra), ELISA

Cited Applications:

WB, IHC, IF

Species Specificity:

human, mouse, rat

Cited Species:

human, mouse

Positive Controls:

WB: NIH/3T3 cells, mouse brain tissue, RAW 264.7 cells

IHC: human pancreas tissue, mouse pancreas tissue

IF-P: mouse colon tissue,

IF-Fro: mouse colon tissue,

Note-IHC: suggested antigen retrieval with TE buffer pH 9.0; (*) Alternatively, antigen retrieval may be performed with citrate buffer pH 6.0

Background Information

Chromogranin B is also named as Secretogranin-1, Sgl, CgB, CHGB and SCG1. CHGB, a secretory granule protein, inserts itself into membrane and forms a chloride-conducting channel (PMID: 30456382). Native CHGB distributes nearly equally in soluble and membrane-bound forms, and both reconstitute highly selective anion channels in membrane (PMID: 37435575). The calculated molecular weight of Chromogranin B is at 78kDa. It has been shown that CHGB has a clear degradation band at ~50 kDa (<https://www.biorxiv.org/content/10.1101/2019.12.28.890053v1.full.pdf>).

Notable Publications

| Author | Pubmed ID | Journal | Application |
|------------------------|-----------|----------------|-------------|
| Mahlon Angus Collins | 26401960 | J Proteome Res | WB |
| Mohanan Valiya Veettil | 31969437 | J Virol | WB |
| Shelby C Bearrows | 31182646 | J Cell Sci | |

Storage

Storage:

Store at -20°C. Stable for one year after shipment.

Storage Buffer:

PBS with 0.02% sodium azide and 50% glycerol, pH7.3

Aliquoting is unnecessary for -20°C storage

*** 20ul sizes contain 0.1% BSA

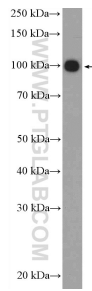
For technical support and original validation data for this product please contact:

T: 1 (888) 4PTGLAB (1-888-478-4522) (toll free in USA), or 1(312) 455-8498 (outside USA)

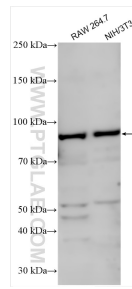
E: proteintech@ptglab.com
W: ptglab.com

This product is exclusively available under Proteintech Group brand and is not available to purchase from any other manufacturer.

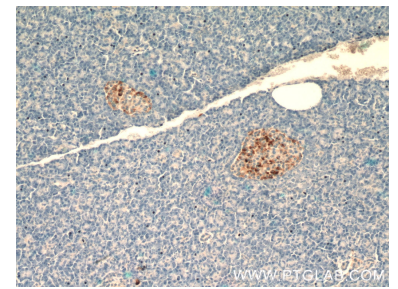
Selected Validation Data



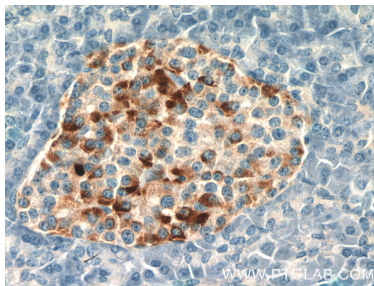
PC-12 cells were subjected to SDS PAGE followed by western blot with 14968-1-AP (Chromogranin B antibody at dilution of 1:300 incubated at room temperature for 1.5 hours.



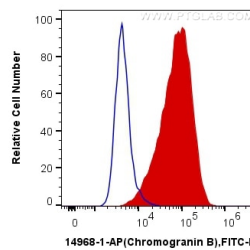
Various lysates were subjected to SDS PAGE followed by western blot with 14968-1-AP (Chromogranin B antibody) at dilution of 1:2000 incubated at room temperature for 1.5 hours.



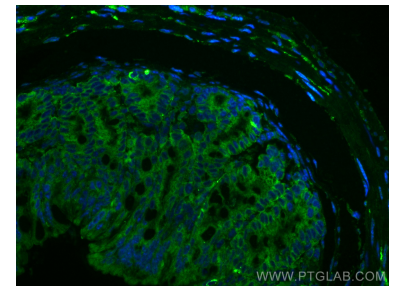
Immunohistochemical analysis of paraffin-embedded human pancreas tissue slide using 14968-1-AP (Chromogranin B antibody at dilution of 1:200 (under 10x lens).



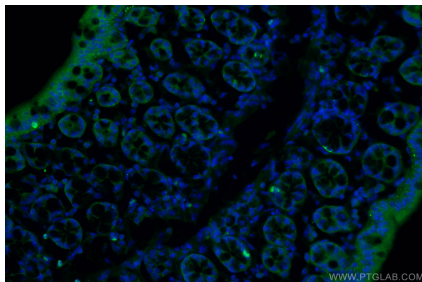
Immunohistochemical analysis of paraffin-embedded human pancreas tissue slide using 14968-1-AP (Chromogranin B antibody at dilution of 1:200 (under 40x lens).



1X10⁶ PC-12 cells were intracellularly stained with 0.4 ug Anti-Human Chromogranin B (14968-1-AP) and CoraLite®488-Conjugated AffiniPure Goat Anti-Rabbit IgG(H+L) at dilution 1:1000 (red), or 0.4 ug Control Antibody. Cells were fixed with 4% PFA and permeabilized with Flow Cytometry Perm Buffer (PF00011-C).



Immunofluorescent analysis of (4% PFA) fixed mouse colon tissue using Chromogranin B antibody (14968-1-AP) at dilution of 1:200 and CoraLite®488-Conjugated AffiniPure Goat Anti-Rabbit IgG(H+L).



Immunofluorescent analysis of (4% PFA) fixed frozen OCT-embedded mouse colon tissue using 14968-1-AP (Chromogranin B antibody) at dilution of 1:200 and CoraLite®488-Conjugated AffiniPure Goat Anti-Rabbit IgG(H+L).