

For Research Use Only

KATNB1 Polyclonal ANTIBODY



Catalog Number: 14969-1-AP

Featured Product

4 Publications

Basic Information

Catalog Number:
14969-1-AP

Size:
32 µg/150 µl

Source:
Rabbit

Isotype:
IgG

Purification Method:
Antigen affinity purification

Immunogen Catalog Number:
AC6836

GenBank Accession Number:
BC001353

GeneID (NCBI):
10300

Full Name:
katanin p80 (WD repeat containing) subunit B 1

Calculated MW:
72 kDa

Observed MW:
72-80 kDa

Recommended Dilutions:

WB 1:500-1:2000

IP 0.5-4.0 µg for IP and 1:500-1:1000 for WB

IF 1:50-1:500

Applications

Tested Applications:

IF, IP, WB, ELISA

Cited Applications:

IF, WB

Species Specificity:

human,mouse,rat

Cited Species:

human, mouse

Note: suggested antigen retrieval with TE buffer pH 9.0; (*) Alternatively, antigen retrieval may be performed with citrate buffer pH 6.0

Positive Controls:

WB : HeLa cells; A431 cells, HepG2 cells, mouse skeletal muscle tissue

IP : HeLa cells;

IF : HeLa cells;

Background Information

Katanin p80 WD40-containing subunit B1 is a protein that in humans is encoded by the KATNB1 gene. Microtubules, polymers of alpha and beta tubulin subunits, form the mitotic spindle of a dividing cell and help to organize membranous organelles during interphase. Katanin is a heterodimer that consists of a 60 kDa ATPase (p80 subunit A 1) and an 80 kDa accessory protein (p80 subunit B 1). The p80 subunit acts to sever and disassemble microtubules, while the p80 subunit targets the enzyme to the centrosome. Katanin is a member of the AAA family of ATPases.

Notable Publications

Author	Pubmed ID	Journal	Application
Michael Dominic Chua	30415487	Cell Microbiol	IF
Kai Jiang	24486153	Dev Cell	WB
Kai Jiang	29395789	Structure	WB

Storage

Storage:

Store at -20°C. Stable for one year after shipment.

Storage Buffer:

PBS with 0.02% sodium azide and 50% glycerol pH 7.3.

Aliquoting is unnecessary for -20°C storage

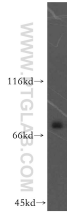
For technical support and original validation data for this product please contact:

T: 1 (888) 4PTGLAB (1-888-478-4522) (toll free in USA), or 1(312) 455-8498 (outside USA)

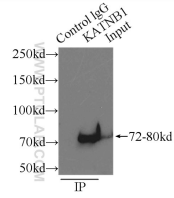
E: proteintech@ptglab.com
W: ptglab.com

This product is exclusively available under Proteintech Group brand and is not available to purchase from any other manufacturer.

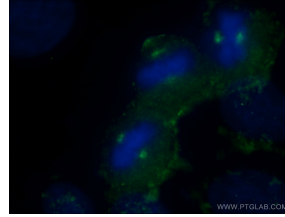
Selected Validation Data



HeLa cells were subjected to SDS PAGE followed by western blot with 14969-1-AP(KATNB1 antibody) at dilution of 1:300 incubated at room temperature for 1.5 hours



IP Result of anti-KATNB1 (IP:14969-1-AP, 3ug; Detection:14969-1-AP 1:500) with HeLa cells lysate 3000ug.



Immunofluorescent analysis of (-20) Ethanol fixed HeLa cells using 14969-1-AP(KATNB1 antibody) at dilution of 1:50 and Alexa Fluor 488-conjugated AffiniPure Goat Anti-Rabbit IgG(H+L)