

For Research Use Only

# RPL14 Polyclonal ANTIBODY



Catalog Number: 14991-1-AP **1 Publications**

## Basic Information

**Catalog Number:**

14991-1-AP

**Size:**

150UL, Concentration: 300 µg/ml by Bradford method using BSA as the standard;

**Source:**

Rabbit

**Isotype:**

IgG

**Immunogen Catalog Number:**

AG6976

**GenBank Accession Number:**

BC000606

**GeneID (NCBI):**

9045

**Full Name:**

ribosomal protein L14

**Calculated MW:**

23 kDa

**Observed MW:**

25-30 kDa

**Purification Method:**

Antigen affinity purification

**Recommended Dilutions:**

WB 1:1000-1:6000

IP 0.5-4.0 µg for IP and 1:500-1:2000 for WB

IHC 1:20-1:200

IF 1:20-1:200

## Applications

**Tested Applications:**

IF, IHC, IP, WB, ELISA

**Cited Applications:**

WB

**Species Specificity:**

human, mouse, rat

**Cited Species:**

rice

**Note-IHC: suggested antigen retrieval with TE buffer pH 9.0; (\*) Alternatively, antigen retrieval may be performed with citrate buffer pH 6.0**

**Positive Controls:**

WB: HepG2 cells, mouse liver tissue, rat liver tissue, HeLa cells, MCF-7 cells

IP: mouse liver tissue,

IHC: human colon cancer tissue,

IF: HepG2 cells,

## Background Information

### Notable Publications

Author	Pubmed ID	Journal	Application
Yanyun Shi	24723395	J Exp Bot	WB

## Storage

**Storage:**

Store at -20°C. Stable for one year after shipment.

**Storage Buffer:**

PBS with 0.02% sodium azide and 50% glycerol pH 7.3.

Aliquoting is unnecessary for -20°C storage

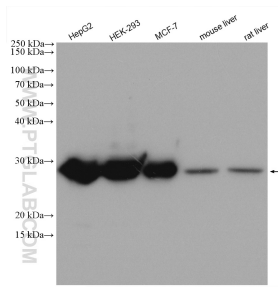
For technical support and original validation data for this product please contact:

T: 1 (888) 4PTGLAB (1-888-478-4522) (toll free in USA), or 1(312) 455-8498 (outside USA)

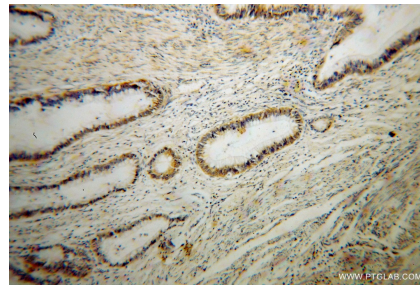
E: proteintech@ptglab.com  
W: ptglab.com

**This product is exclusively available under Proteintech Group brand and is not available to purchase from any other manufacturer.**

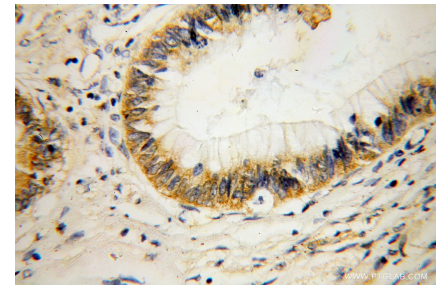
## Selected Validation Data



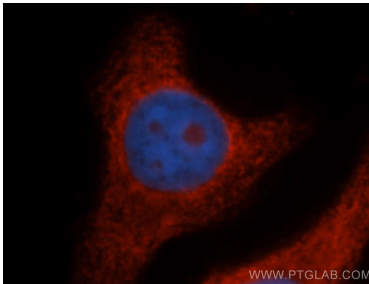
Various lysates were subjected to SDS PAGE followed by western blot with 14991-1-AP (RPL14 antibody) at dilution of 1:3000 incubated at room temperature for 1.5 hours.



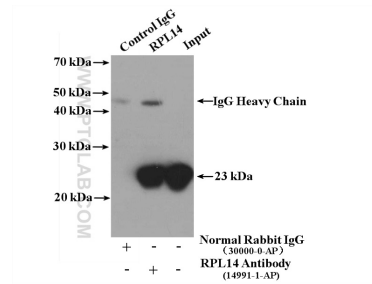
Immunohistochemical analysis of paraffin-embedded human colon cancer using 14991-1-AP (RPL14 antibody) at dilution of 1:100 (under 10x lens).



Immunohistochemical analysis of paraffin-embedded human colon cancer using 14991-1-AP (RPL14 antibody) at dilution of 1:100 (under 40x lens).



Immunofluorescent analysis of HepG2 cells, using RPL14 antibody 14991-1-AP at 1:50 dilution and Rhodamine-labeled goat anti-rabbit IgG (red). Blue pseudocolor = DAPI (fluorescent DNA dye).



IP Result of anti-RPL14 (IP:14991-1-AP, 4ug; Detection:14991-1-AP 1:1000) with mouse liver tissue lysate 6800ug.