

HLA-E

Polyclonal ANTIBODY

Catalog Number: 15008-1-AP

Basic Information

Catalog Number: 15008-1-AP	GenBank Accession Number: BC002578	Recommended Dilutions: WB 1:500-1:1000
Size: 41 µg/150 µl	GeneID (NCBI): 3133	
Source: Rabbit	Full Name: major histocompatibility complex, class I, E	
Isotype: IgG	Calculated MW: 40 kDa	
Purification Method: Antigen affinity purification	Observed MW: 40 kDa	
Immunogen Catalog Number: AG6703		

Applications

Tested Applications: WB, ELISA	Positive Controls: WB : THP-1 cells; human kidney tissue, human liver tissue, HUVEC cells
Species Specificity: human	
Note: suggested antigen retrieval with TE buffer pH 9.0; (*) Alternatively, antigen retrieval may be performed with citrate buffer pH 6.0	

Background Information

Human major histocompatibility complex (MHC) antigens, also referred to as human leukocyte antigens (HLA), are encoded by genes located on the short arm of chromosome 6 (p21.3). There are two classes of HLA antigens: class I and class II. This class I molecules are membrane glycoproteins composed of a heavy (alpha) chain which is encoded by a HLA class I gene, and β2-microglobulin light (beta) chain. The most extensively characterized members of the HLA class I gene family are the genes encoding the major transplantation antigens, HLA-A, B and C. HLA-E is a non-classical MHC class I molecule. HLA-E is frequently overexpressed in tumor diseases, transplants and virus-infected cells and represents an immunomodulatory molecule by binding to the receptors CD94/NKG2A, -B and -C on NK and T cells. Due to its immune suppressive features HLA-E expression might represent an important mechanism of tumors to escape immune surveillance. (PMID: 667938; 3375250; 2249951; 27589686)

Notable Publications

Author	Pubmed ID	Journal	Application
--------	-----------	---------	-------------

Storage

Storage:
Store at -20°C. Stable for one year after shipment.
Storage Buffer:
PBS with 0.02% sodium azide and 50% glycerol pH 7.3.
Aliquoting is unnecessary for -20°C storage

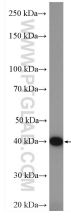
For technical support and original validation data for this product please contact:

T: 1 (888) 4PTGLAB (1-888-478-4522) (toll free in USA), or 1(312) 455-8498 (outside USA)

E: proteintech@ptglab.com
W: ptglab.com

This product is exclusively available under Proteintech Group brand and is not available to purchase from any other manufacturer.

Selected Validation Data



THP-1 cells were subjected to SDS PAGE followed by western blot with 15008-1-AP (HLA-E antibody) at dilution of 1:600 incubated at room temperature for 1.5 hours