

For Research Use Only

APLP2 Polyclonal ANTIBODY

Catalog Number: 15041-1-AP



Basic Information

Catalog Number:

15041-1-AP

Size:

150UL, Concentration: 133 µg/ml by Bradford method using BSA as the standard;

Source:

Rabbit

Isotype:

IgG

Immunogen Catalog Number:

AG6838

GenBank Accession Number:

BC000373

GeneID (NCBI):

334

Full Name:

amyloid beta (A4) precursor-like protein 2

Calculated MW:

87 kDa

Observed MW:

120 kDa

Purification Method:

Antigen affinity purification

Recommended Dilutions:

WB 1:200-1:1000

IP 0.5-4.0 µg for IP and 1:200-1:1000 for WB

IHC 1:20-1:200

Applications

Tested Applications:

IHC, IP, WB, ELISA

Species Specificity:

human, mouse, rat

Note-IHC: suggested antigen retrieval with TE buffer pH 9.0; (*) Alternatively, antigen retrieval may be performed with citrate buffer pH 6.0

Positive Controls:

WB: mouse brain tissue,

IP: mouse brain tissue,

IHC: human brain tissue,

Background Information

Storage

Storage:

Store at -20°C. Stable for one year after shipment.

Storage Buffer:

PBS with 0.02% sodium azide and 50% glycerol pH 7.3.

Aliquoting is unnecessary for -20°C storage

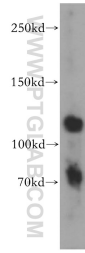
For technical support and original validation data for this product please contact:

T: 1 (888) 4PTGLAB (1-888-478-4522) (toll free in USA), or 1(312) 455-8498 (outside USA)

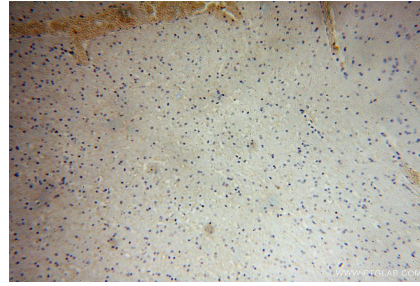
E: proteintech@ptglab.com
W: ptglab.com

This product is exclusively available under Proteintech Group brand and is not available to purchase from any other manufacturer.

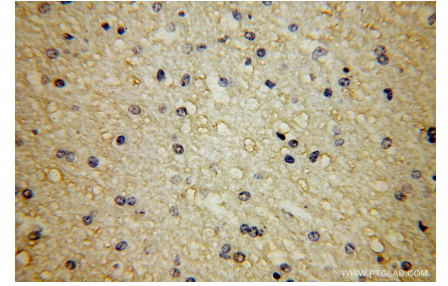
Selected Validation Data



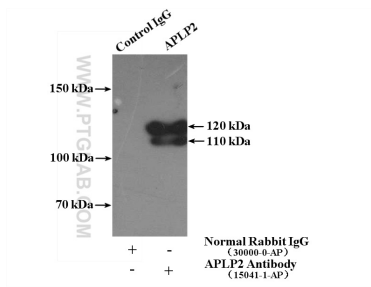
mouse brain tissue were subjected to SDS PAGE followed by western blot with 15041-1-AP (APLP2 antibody) at dilution of 1:300 incubated at room temperature for 1.5 hours.



Immunohistochemical analysis of paraffin-embedded human brain using 15041-1-AP (APLP2 antibody) at dilution of 1:50 (under 10x lens).



Immunohistochemical analysis of paraffin-embedded human brain using 15041-1-AP (APLP2 antibody) at dilution of 1:50 (under 40x lens).



IP Result of anti-APLP2 (IP:15041-1-AP, 4ug; Detection:15041-1-AP 1:300) with mouse brain tissue lysate 4000ug.