

For Research Use Only

PCBP2 Polyclonal antibody

Catalog Number: 15070-1-AP

Featured Product

17 Publications



Basic Information

Catalog Number:

15070-1-AP

Size:

150ul, Concentration: 400 ug/ml by Nanodrop;

Source:

Rabbit

Isotype:

IgG

Immunogen Catalog Number:

AG7102

GenBank Accession Number:

BC001155

GeneID (NCBI):

5094

UNIPROT ID:

Q15366

Full Name:

poly(rC) binding protein 2

Calculated MW:

39 kDa

Observed MW:

43 kDa

Purification Method:

Antigen affinity purification

Recommended Dilutions:

WB: 1:1000-1:6000

IHC: 1:50-1:500

IF/ICC: 1:50-1:500

Applications

Tested Applications:

WB, IHC, IF/ICC, ELISA

Cited Applications:

WB, IHC, IF, ColP

Species Specificity:

human

Cited Species:

human, rat

Note-IHC: suggested antigen retrieval with TE buffer pH 9.0; (*) Alternatively, antigen retrieval may be performed with citrate buffer pH 6.0

Positive Controls:

WB: HeLa cells, Jurkat cells

IHC: human testis tissue, human cervical cancer tissue, human colon tissue, human liver tissue

IF/ICC: HeLa cells,

Background Information

Poly(rC)-binding protein 2 (PCBP2) is a single-stranded nucleic acid binding protein that binds preferentially to oligo dC. It is also named Heterogeneous nuclear ribonucleoprotein E2, binds also poly(rU). It negatively regulates cellular antiviral responses mediated by MAVS signaling. It acts as an adapter between MAVS and the E3 ubiquitin ligase ITCH, therefore triggering MAVS ubiquitination and degradation.(19881509) This antibody can recognize PCBP2 and PCBP1.

Notable Publications

Author	Pubmed ID	Journal	Application
Xiaonan Wang	33037085	Mol Cancer Res	IHC, WB
Haiyan Gu	35322803	Nat Commun	WB, ColP
Changyu Chen	29744291	FEBS Open Bio	WB, IHC

Storage

Storage:

Store at -20°C. Stable for one year after shipment.

Storage Buffer:

PBS with 0.02% sodium azide and 50% glycerol, pH7.3

Aliquoting is unnecessary for -20°C storage

*** 20ul sizes contain 0.1% BSA

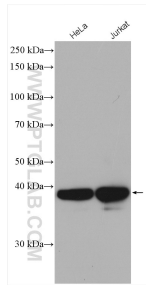
For technical support and original validation data for this product please contact:

T: 1 (888) 4PTGLAB (1-888-478-4522) (toll free in USA), or 1(312) 455-8498 (outside USA)

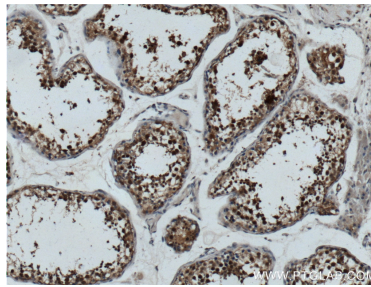
E: proteintech@ptglab.com
W: ptglab.com

This product is exclusively available under Proteintech Group brand and is not available to purchase from any other manufacturer.

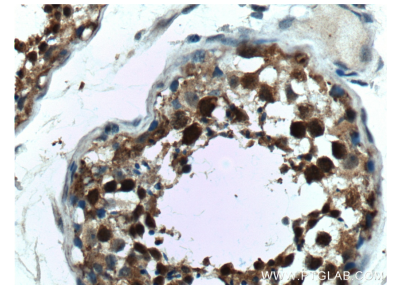
Selected Validation Data



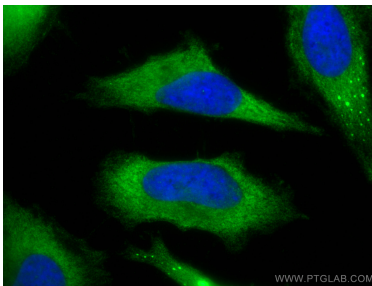
Various lysates were subjected to SDS PAGE followed by western blot with 15070-1-AP (PCBP2 antibody) at dilution of 1:4000 incubated at room temperature for 1.5 hours.



Immunohistochemical analysis of paraffin-embedded human testis tissue slide using 15070-1-AP (PCBP2 Antibody) at dilution of 1:200 (under 10x lens).



Immunohistochemical analysis of paraffin-embedded human testis tissue slide using 15070-1-AP (PCBP2 Antibody) at dilution of 1:200 (under 40x lens).



Immunofluorescent analysis of (-20°C Methanol) fixed HeLa cells using PCBP2 antibody (15070-1-AP) at dilution of 1:200 and CoraLite®488-Conjugated Goat Anti-Rabbit IgG(H+L).