

For Research Use Only

METTL3 Polyclonal antibody

Catalog Number: 15073-1-AP

Featured Product

157 Publications



Basic Information

Catalog Number:

15073-1-AP

Size:

150ul, Concentration: 600 µg/ml by Nanodrop;

Source:

Rabbit

Isotype:

IgG

Immunogen Catalog Number:

AG7110

GenBank Accession Number:

BC001650

GeneID (NCBI):

56339

Full Name:

methyltransferase like 3

Calculated MW:

64 kDa

Observed MW:

65-70 kDa

Purification Method:

Antigen affinity purification

Recommended Dilutions:

WB 1:500-1:2000

IP 0.5-4.0 ug for IP and 1:500-1:2000 for WB

IHC 1:50-1:500

Applications

Tested Applications:

IHC, IP, WB, ELISA

Cited Applications:

ChIP, CoIP, IF, IHC, IP, RIP, WB

Species Specificity:

Human, Mouse, Rat, Monkey

Cited Species:

drosophila, human, mouse, pig, rat, zebrafish

Note-IHC: suggested antigen retrieval with TE buffer pH 9.0; (*) Alternatively, antigen retrieval may be performed with citrate buffer pH 6.0

Positive Controls:

WB : HEK-293 cells, A549 cells, COS-7 cells, HepG2 cells, HT-1080 cells, HeLa cells, rat testis tissue, Jurkat cells, NCCIT cells, Neuro-2a cells

IP : HEK-293 cells,

IHC : human lung cancer tissue,

Background Information

METTL3 is a key S-adenosyl-L-methionine-binding subunit, which is component of a complex multicomponent enzyme that catalyzes the methylation of internal adenosine residues in eukaryotic mRNA, forming N6-methyladenosine. It contains 2 putative nuclear localization signals and 2 consensus methylation motifs. The calculated molecular weight of METTL3 is 64 kDa, but modified METTL3 is about 65-70 kDa.

Notable Publications

Author	Pubmed ID	Journal	Application
Zhang Zhang	34594034	Nat Methods	WB
Fanpeng Zhao	34593014	Mol Neurodegener	WB,IHC
Brandon J Gheller	33083017	Cell Death Discov	WB

Storage

Storage:

Store at -20°C. Stable for one year after shipment.

Storage Buffer:

PBS with 0.02% sodium azide and 50% glycerol pH 7.3.

Aliquoting is unnecessary for -20°C storage

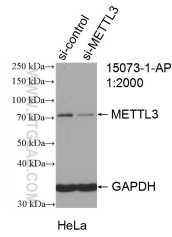
For technical support and original validation data for this product please contact:

T: 1 (888) 4PTGLAB (1-888-478-4522) (toll free in USA), or 1(312) 455-8498 (outside USA)

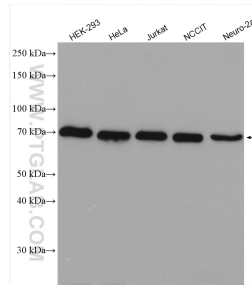
E: proteintech@ptglab.com
W: ptglab.com

This product is exclusively available under Proteintech Group brand and is not available to purchase from any other manufacturer.

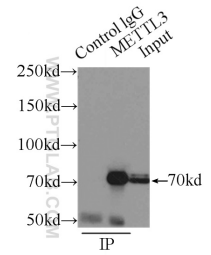
Selected Validation Data



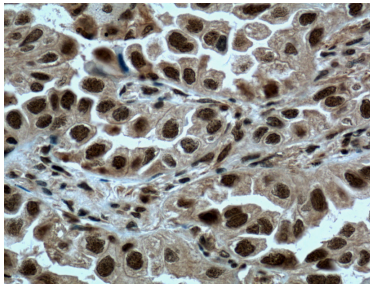
WB result of METTL3 antibody (15073-1-AP; 1:2000; incubated at room temperature for 1.5 hours) with sh-Control and sh-METTL3 transfected HeLa cells.



Various lysates were subjected to SDS PAGE followed by western blot with 15073-1-AP (METTL3 antibody) at dilution of 1:1000 incubated at room temperature for 1.5 hours.



IP Result of anti-METTL3 (IP:15073-1-AP, 4ug; Detection:15073-1-AP 1:1000) with HEK-293 cells lysate 4500ug.



Immunohistochemical analysis of paraffin-embedded human lung cancer tissue slide using 15073-1-AP (METTL3 Antibody) at dilution of 1:200 (under 40x lens). Heat mediated antigen retrieval with Tris-EDTA buffer (pH 9.0).