

For Research Use Only

TGM2 Polyclonal antibody

Catalog Number: 15100-1-AP

Featured Product

25 Publications



Basic Information

Catalog Number:

15100-1-AP

Size:

150ul, Concentration: 600 ug/ml by Nanodrop;

Source:

Rabbit

Isotype:

IgG

Immunogen Catalog Number:

AG7439

GenBank Accession Number:

BC003551

GeneID (NCBI):

7052

ENSEMBL Gene ID:

ENSG00000198959

UNIPROT ID:

P21980

Full Name:

transglutaminase 2 (C polypeptide, protein-glutamine-gamma-glutamyltransferase)

Calculated MW:

77 kDa

Observed MW:

77-80 kDa

Purification Method:

Antigen affinity purification

Recommended Dilutions:

WB 1:5000-1:50000

IP 0.5-4.0 ug for 1.0-3.0 mg of total protein lysate

IHC 1:50-1:500

Applications

Tested Applications:

WB, IHC, IP, ELISA

Cited Applications:

WB, IHC, IF, IP, ChIP

Species Specificity:

human

Cited Species:

human, mouse, canine

Note-IHC: suggested antigen retrieval with TE buffer pH 9.0; (*) Alternatively, antigen retrieval may be performed with citrate buffer pH 6.0

Positive Controls:

WB: HUVEC cells, HepG2 cells, BxPC-3 cells, HeLa cells, A549 cells, K-562 cells

IP: HeLa cells,

IHC: human liver cancer tissue,

Notable Publications

Author	Pubmed ID	Journal	Application
Di Ye	34006301	J Exp Clin Cancer Res	WB
Katsutaka Mitachi	33753854	Sci Rep	IHC
Chunqing Wang	32572027	Nat Commun	WB

Storage

Storage:

Store at -20°C. Stable for one year after shipment.

Storage Buffer:

PBS with 0.02% sodium azide and 50% glycerol, pH7.3

Aliquoting is unnecessary for -20°C storage

*** 20ul sizes contain 0.1% BSA

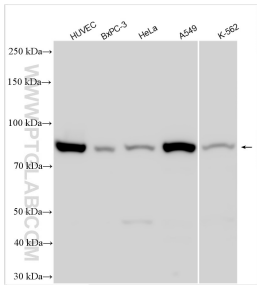
For technical support and original validation data for this product please contact:

T: 1 (888) 4PTGLAB (1-888-478-4522) (toll free in USA), or 1(312) 455-8498 (outside USA)

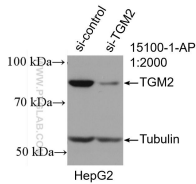
E: proteintech@ptglab.com
W: ptglab.com

This product is exclusively available under Proteintech Group brand and is not available to purchase from any other manufacturer.

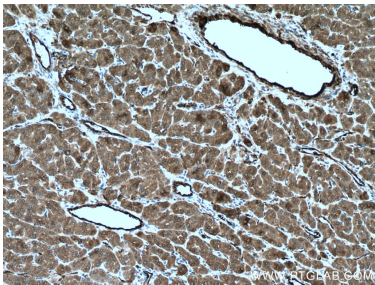
Selected Validation Data



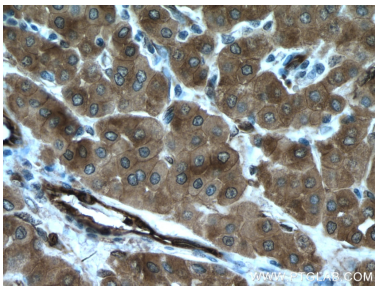
Various lysates were subjected to SDS PAGE followed by western blot with 15100-1-AP (TGM2 antibody) at dilution of 1:20000 incubated at room temperature for 1.5 hours.



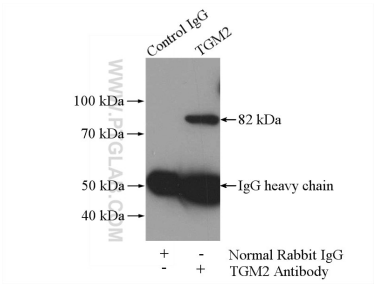
WB result of TGM2 antibody (15100-1-AP; 1:2000; incubated at room temperature for 1.5 hours) with sh-Control and sh-TGM2 transfected HepG2 cells.



Immunohistochemical analysis of paraffin-embedded human liver cancer tissue slide using 15100-1-AP (TGM2 antibody) at dilution of 1:200 (under 10x lens. Heat mediated antigen retrieval with Tris-EDTA buffer (pH 9.0).



Immunohistochemical analysis of paraffin-embedded human liver cancer tissue slide using 15100-1-AP (TGM2 antibody) at dilution of 1:200 (under 40x lens. Heat mediated antigen retrieval with Tris-EDTA buffer (pH 9.0).



IP result of anti-TGM2 (IP:15100-1-AP, 4ug; Detection:15100-1-AP 1:400) with HeLa cells lysate 1200ug.