

For Research Use Only

# AIPL1 Polyclonal ANTIBODY



Catalog Number: 15108-1-AP

1 Publications

## Basic Information

Catalog Number:  
15108-1-AP

Size:  
31 µg/150 µl

Source:  
Rabbit

Isotype:  
IgG

Purification Method:  
Antigen affinity purification

Immunogen Catalog Number:  
AG4625

GenBank Accession Number:  
BC012055

GeneID (NCBI):  
23746

Full Name:  
aryl hydrocarbon receptor interacting protein-like 1

Calculated MW:  
44 kDa

Observed MW:  
44 kDa

Recommended Dilutions:

WB : 1:500-1:1000

IP 0.5-4.0 µg for IP and 1:500-1:1000 for WB

IHC 1:20-1:200

## Applications

Tested Applications:

IHC, IP, WB, ELISA

Cited Applications:

IF, WB

Species Specificity:

human,mouse,rat

Cited Species:

mouse

**Note: suggested antigen retrieval with TE buffer pH 9.0; (\*) Alternatively, antigen retrieval may be performed with citrate buffer pH 6.0**

Positive Controls:

WB : Y79 cells; mouse brain tissue, SH-SY5Y cells

IP : Y79 cells;

IHC : human eye tissue;

## Background Information

### Notable Publications

Author	Pubmed ID	Journal	Application
Lei-Lei Gao	28145526	Sci Rep	WB,IF

## Storage

Storage:

Store at -20°C. Stable for one year after shipment.

Storage Buffer:

PBS with 0.02% sodium azide and 50% glycerol pH 7.3.

Aliquoting is unnecessary for -20°C storage

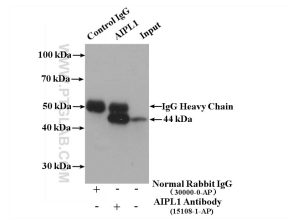
For technical support and original validation data for this product please contact:

T: 1 (888) 4PTGLAB (1-888-478-4522) (toll free in USA), or 1(312) 455-8498 (outside USA)

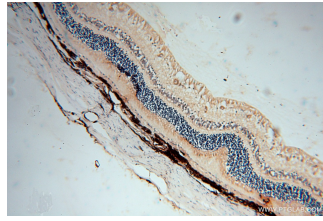
E: [proteintech@ptglab.com](mailto:proteintech@ptglab.com)  
W: [ptglab.com](http://ptglab.com)

This product is exclusively available under Proteintech Group brand and is not available to purchase from any other manufacturer.

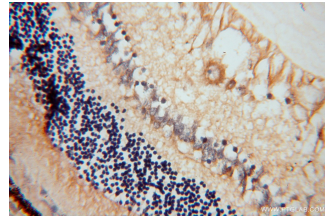
## Selected Validation Data



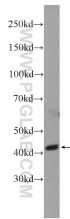
IP result of anti-AIPL1(IP:15108-1-AP, 4ug; Detection:15108-1-AP 1:500) with Y79 cells lysate 2400 ug



Immunohistochemical of paraffin-embedded human eye using 15108-1-AP(AIPL1 antibody) at dilution of 1:50 (under 10x lens)



Immunohistochemical of paraffin-embedded human eye using 15108-1-AP(AIPL1 antibody) at dilution of 1:50 (under 40x lens)



Y79 cells were subjected to SDS PAGE followed by western blot with 15108-1-AP( AIPL1 Antibody) at dilution of 1:600 incubated at room temperature for 1.5 hours