

For Research Use Only

KCNE1 Polyclonal antibody

Catalog Number: 15150-1-AP

2 Publications



Basic Information

Catalog Number:

15150-1-AP

Size:

150ul, Concentration: 300 ug/ml by Nanodrop;

Source:

Rabbit

Isotype:

IgG

Immunogen Catalog Number:

AG3495

GenBank Accession Number:

BC036452

GeneID (NCBI):

3753

UNIPROT ID:

P15382

Full Name:

potassium voltage-gated channel, Isk-related family, member 1

Calculated MW:

15 kDa

Observed MW:

15 kDa

Purification Method:

Antigen affinity purification

Recommended Dilutions:

WB: 1:500-1:3000

IF: 1:20-1:200

Applications

Tested Applications:

WB, IF, ELISA

Cited Applications:

WB

Species Specificity:

human, mouse, rat

Cited Species:

rat, pig

Positive Controls:

WB : mouse kidney tissue,

IF : mouse heart tissue,

Notable Publications

Author	Pubmed ID	Journal	Application
Po-Cheng Chang	31772612	Cardiovasc Ther	WB
Yankun Lv	25857626	Br J Pharmacol	WB

Storage

Storage:

Store at -20°C. Stable for one year after shipment.

Storage Buffer:

PBS with 0.02% sodium azide and 50% glycerol, pH7.3

Aliquoting is unnecessary for -20°C storage

*** 20ul sizes contain 0.1% BSA

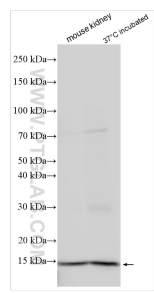
For technical support and original validation data for this product please contact:

T: 1 (888) 4PTGLAB (1-888-478-4522) (toll free in USA), or 1(312) 455-8498 (outside USA)

E: proteintech@ptglab.com
W: ptglab.com

This product is exclusively available under Proteintech Group brand and is not available to purchase from any other manufacturer.

Selected Validation Data



Various lysates were subjected to SDS PAGE followed by western blot with 15150-1-AP (KCNE1 antibody) at dilution of 1:1500 incubated at room temperature for 1.5 hours.

IF result of anti-KCNE1 (15150-1-AP) in frozen mouse heart section by Dr Nicola Smart.

KCNE1 Polyclonal Antibody

15150-1-AP

Immunofluorescence of frozen mouse heart section. 1:200 dilution of 15150-1-AP overnight at 4°C in Block. Secondary antibody: Alexa 594 Goat anti-rabbit.

KCNE1 is localised to conduction system (Cx40-GFP), although expression appears to be in cells surrounding conduction myocytes (not the cardiomyocytes, as expected).

