

For Research Use Only

SARS Polyclonal ANTIBODY

Catalog Number: 15162-1-AP



Basic Information

Catalog Number:

15162-1-AP

Size:

150UL, Concentration: 160 µg/ml by Bradford method using BSA as the standard;

Source:

Rabbit

Isotype:

IgG

Immunogen Catalog Number:

AG7270

GenBank Accession Number:

BC000716

GeneID (NCBI):

6301

Full Name:

seryl-tRNA synthetase

Calculated MW:

58 kDa

Observed MW:

58-64 kDa

Purification Method:

Antigen affinity purification

Recommended Dilutions:

WB 1:500-1:2000

IHC 1:20-1:200

IF 1:10-1:100

Applications

Tested Applications:

IF, IHC, WB, ELISA

Species Specificity:

human, mouse, rat

Note-IHC: suggested antigen retrieval with TE buffer pH 9.0; (*) Alternatively, antigen retrieval may be performed with citrate buffer pH 6.0

Positive Controls:

WB: HEK-293 cells, HeLa cells, HepG2 cells

IHC: human lung cancer tissue,

IF: HepG2 cells,

Background Information

SARS(Serine--tRNA ligase, cytoplasmic) Catalyzes the attachment of serine to tRNA(Ser). Is also probably able to aminoacylate tRNA(Sec) with serine, to form the misacylated tRNA L-seryl-tRNA(Sec), which will be further converted into selenocysteinyl-tRNA(Sec).The deduced 514-amino acid protein has a calculated molecular mass of about 59 kD.And it can form a dimer of 120kDa(PMID:2180700).It is detected a band of 65kDa in MEL cell lines(PMID:1918033).

Storage

Storage:

Store at -20°C. Stable for one year after shipment.

Storage Buffer:

PBS with 0.02% sodium azide and 50% glycerol pH 7.3.

Aliquoting is unnecessary for -20°C storage

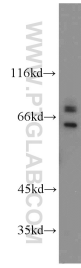
For technical support and original validation data for this product please contact:

T: 1 (888) 4PTGLAB (1-888-478-4522) (toll free in USA), or 1(312) 455-8498 (outside USA)

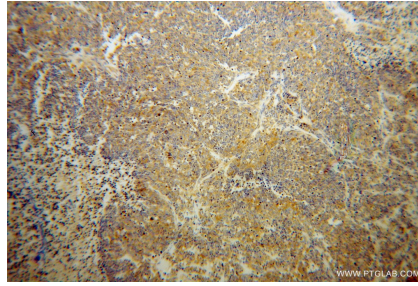
E: proteintech@ptglab.com
W: ptglab.com

This product is exclusively available under Proteintech Group brand and is not available to purchase from any other manufacturer.

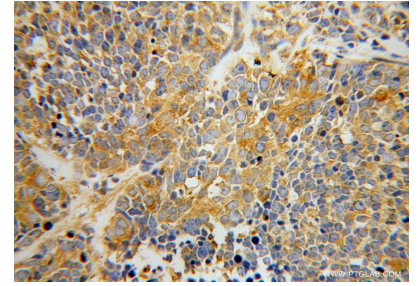
Selected Validation Data



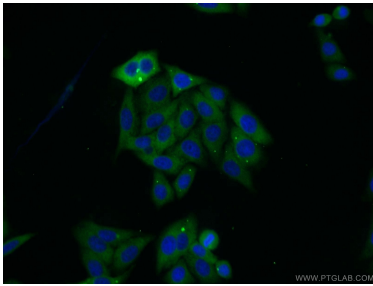
HEK-293 cells were subjected to SDS PAGE followed by western blot with 15162-1-AP (SARS antibody) at dilution of 1:1000 incubated at room temperature for 1.5 hours.



Immunohistochemical analysis of paraffin-embedded human lung cancer using 15162-1-AP (SARS antibody) at dilution of 1:100 (under 10x lens).



Immunohistochemical analysis of paraffin-embedded human lung cancer using 15162-1-AP (SARS antibody) at dilution of 1:100 (under 40x lens).



Immunofluorescent analysis of HepG2 cells using 15162-1-AP (SARS antibody) at dilution of 1:25 and Alexa Fluor 488-conjugated AffiniPure Goat Anti-Rabbit IgG(H+L).