

For Research Use Only

GFPT2 Polyclonal ANTIBODY



Catalog Number: 15189-1-AP

Basic Information

Catalog Number: 15189-1-AP	GenBank Accession Number: BC000012	Recommended Dilutions: WB 1:200-1:500 IP 0.5-4.0 ug for IP and 1:200-1:1000 for WB
Size: 35 µg/150 µl	GeneID (NCBI): 9945	
Source: Rabbit	Full Name: glutamine-fructose-6-phosphate transaminase 2	
Isotype: IgG	Calculated MW: 77 kDa	
Purification Method: Antigen affinity purification	Observed MW: 75-77 kDa	
Immunogen Catalog Number: AG7275		

Applications

Tested Applications: IP, WB, ELISA	Positive Controls: WB : HT1080 cells; IP : HT-1080 cells;
Species Specificity: human	
Note: suggested antigen retrieval with TE buffer pH 9.0; (*) Alternatively, antigen retrieval may be performed with citrate buffer pH 6.0	

Background Information

Notable Publications

Author	Pubmed ID	Journal	Application
--------	-----------	---------	-------------

Storage

Storage:
Store at -20°C. Stable for one year after shipment.
Storage Buffer:
PBS with 0.1% sodium azide and 50% glycerol pH 7.3.
Aliquoting is unnecessary for -20°C storage

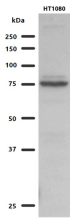
For technical support and original validation data for this product please contact:

T: 1 (888) 4PTGLAB (1-888-478-4522) (toll free in USA), or 1(312) 455-8498 (outside USA)

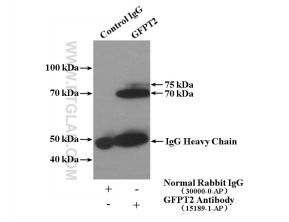
E: proteintech@ptglab.com
W: ptglab.com

This product is exclusively available under Proteintech Group brand and is not available to purchase from any other manufacturer.

Selected Validation Data



WB result of GFPT2 antibody (15189-1-AP) with HT1080 cells.



IP Result of anti-GFPT2 (IP:15189-1-AP, 4ug; Detection:15189-1-AP 1:300) with HT-1080 cells lysate 2400ug.