

For Research Use Only

B4GALT4 Polyclonal antibody

Catalog Number:15200-1-AP



Basic Information

Catalog Number:

15200-1-AP

Size:

150ul , Concentration: 400 ug/ml by Nanodrop and 227 ug/ml by Bradford method using BSA as the standard;

Source:

Rabbit

Isotype:

IgG

Immunogen Catalog Number:

AG7348

GenBank Accession Number:

BC004523

GeneID (NCBI):

8702

UNIPROT ID:

O60513

Full Name:

UDP-Gal:betaGlcNAc beta 1,4-galactosyltransferase, polypeptide 4

Calculated MW:

40 kDa

Observed MW:

42 kDa

Purification Method:

Antigen affinity purification

Recommended Dilutions:

WB 1:1000-1:4000

IHC 1:50-1:500

IF/ICC 1:50-1:500

Applications

Tested Applications:

WB, IHC, IF/ICC, ELISA

Species Specificity:

human, mouse, rat

Note-IHC: suggested antigen retrieval with TE buffer pH 9.0; (*) Alternatively, antigen retrieval may be performed with citrate buffer pH 6.0

Positive Controls:

WB : Caco-2 cells, mouse skeletal muscle tissue, PC-3 cells, HaCaT cells, HepG2 cells

IHC : human kidney tissue,

IF/ICC : A549 cells,

Storage

Storage:

Store at -20°C. Stable for one year after shipment.

Storage Buffer:

PBS with 0.02% sodium azide and 50% glycerol pH 7.3.

Aliquoting is unnecessary for -20°C storage

*** 20ul sizes contain 0.1% BSA

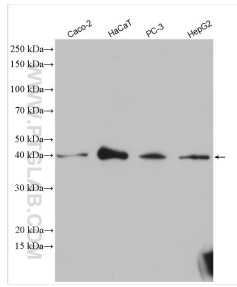
For technical support and original validation data for this product please contact:

T: 1 (888) 4PTGLAB (1-888-478-4522) (toll free in USA), or 1(312) 455-8498 (outside USA)

E: proteintech@ptglab.com
W: ptglab.com

This product is exclusively available under Proteintech Group brand and is not available to purchase from any other manufacturer.

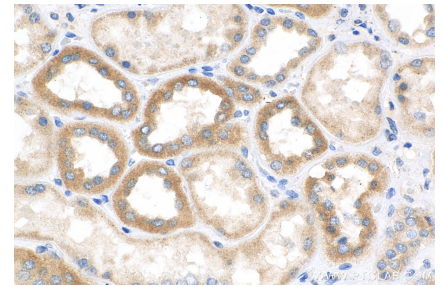
Selected Validation Data



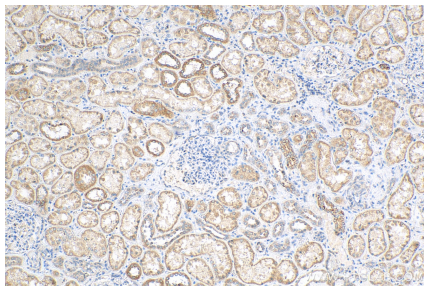
Various lysates were subjected to SDS PAGE followed by western blot with 15200-1-AP (B4GALT4 antibody) at dilution of 1:2000 incubated at room temperature for 1.5 hours.



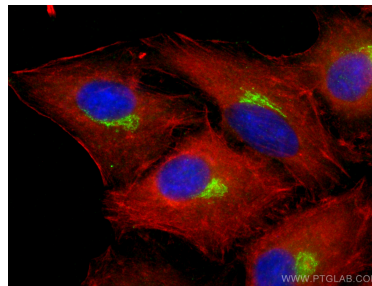
mouse skeletal muscle tissue were subjected to SDS PAGE followed by western blot with 15200-1-AP (B4GALT4 antibody) at dilution of 1:500 incubated at room temperature for 1.5 hours.



Immunohistochemical analysis of paraffin-embedded human kidney tissue slide using 15200-1-AP (B4GALT4 antibody) at dilution of 1:200 (under 40x lens). Heat mediated antigen retrieval with Tris-EDTA buffer (pH 9.0).



Immunohistochemical analysis of paraffin-embedded human kidney tissue slide using 15200-1-AP (B4GALT4 antibody) at dilution of 1:200 (under 10x lens). Heat mediated antigen retrieval with Tris-EDTA buffer (pH 9.0).



Immunofluorescent analysis of (-20°C Methanol) fixed A549 cells using B4GALT4 antibody (15200-1-AP) at dilution of 1:200 and CoraLite® 488-Conjugated Goat Anti-Rabbit IgG(H+L) (SA00013-2), CoraLite® 594 Beta Actin antibody (CL594-66009, Clone: 2D4H5, red).