

For Research Use Only

# RPAIN Polyclonal antibody

Catalog Number: 15220-1-AP



## Basic Information

**Catalog Number:**

15220-1-AP

**Size:**

150ul , Concentration: 200 µg/ml by Bradford method using BSA as the standard;

**Source:**

Rabbit

**Isotype:**

IgG

**Immunogen Catalog Number:**

AG7392

**GenBank Accession Number:**

BC004451

**GeneID (NCBI):**

84268

**Full Name:**

RPA interacting protein

**Calculated MW:**

25 kDa

**Observed MW:**

30-45 kDa

**Purification Method:**

Antigen affinity purification

**Recommended Dilutions:**

WB 1:200-1:1000

IP 0.5-4.0 ug for IP and 1:200-1:1000 for WB

IHC 1:20-1:200

## Applications

**Tested Applications:**

IHC, IP, WB, ELISA

**Species Specificity:**

human, mouse

**Note-IHC: suggested antigen retrieval with TE buffer pH 9.0; (\*) Alternatively, antigen retrieval may be performed with citrate buffer pH 6.0**

**Positive Controls:**

WB : A375 cells, mouse ovary tissue, A2780 cells

IP : A375 cells,

IHC : human ovary tumor tissue,

## Background Information

PAIN, also named as RIP, mediates the import of RPA complex into the nucleus, possibly via some interaction with importin beta. RPAIN has many isoforms with MW 25-27 kDa, 12 kDa and 16-19 kDa. The publication with PMID: 16135809 reported the MW 30 and 45 kDa.

## Storage

**Storage:**

Store at -20°C. Stable for one year after shipment.

**Storage Buffer:**

PBS with 0.02% sodium azide and 50% glycerol pH 7.3.

Aliquoting is unnecessary for -20°C storage

For technical support and original validation data for this product please contact:

T: 1 (888) 4PTGLAB (1-888-478-4522) (toll free in USA), or 1(312) 455-8498 (outside USA)

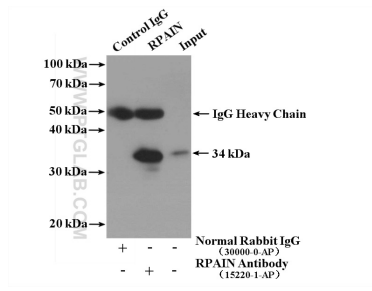
E: proteintech@ptglab.com  
W: ptglab.com

**This product is exclusively available under Proteintech Group brand and is not available to purchase from any other manufacturer.**

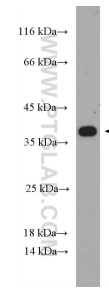
## Selected Validation Data



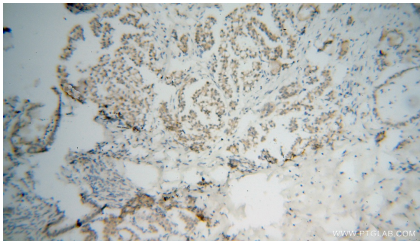
A2780 cells were subjected to SDS PAGE followed by western blot with 15220-1-AP (RPAIN antibody) at dilution of 1:300 incubated at room temperature for 1.5 hours.



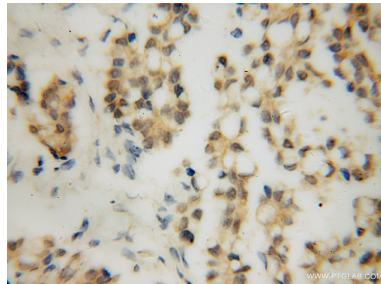
IP result of anti-RPAIN (IP:15220-1-AP, 4ug; Detection:15220-1-AP 1:300) with A375 cells lysate 2200 ug.



A375 cells were subjected to SDS PAGE followed by western blot with 15220-1-AP (RPAIN Antibody) at dilution of 1:300 incubated at room temperature for 1.5 hours.



Immunohistochemical analysis of paraffin-embedded human ovary tumor using 15220-1-AP (RPAIN antibody) at dilution of 1:50 (under 10x lens).



Immunohistochemical analysis of paraffin-embedded human ovary tumor using 15220-1-AP (RPAIN antibody) at dilution of 1:50 (under 40x lens).