

For Research Use Only

# SLC25A1 Polyclonal antibody

Catalog Number: 15235-1-AP

Featured Product

35 Publications



## Basic Information

### Catalog Number:

15235-1-AP

### Size:

150ul, Concentration: 133 ug/ml by Bradford method using BSA as the standard;

### Source:

Rabbit

### Isotype:

IgG

### Immunogen Catalog Number:

AG7352

### GenBank Accession Number:

BC004980

### GeneID (NCBI):

6576

### UNIPROT ID:

P53007

### Full Name:

solute carrier family 25 (mitochondrial carrier; citrate transporter), member 1

### Calculated MW:

34 kDa

### Observed MW:

30-34 kDa

### Purification Method:

Antigen affinity purification

### Recommended Dilutions:

WB: 1:1000-1:4000

IP: 0.5-4.0 ug for 1.0-3.0 mg of total protein lysate

IHC: 1:50-1:500

IF/ICC: 1:50-1:500

## Applications

### Tested Applications:

WB, IHC, IF/ICC, IP, ELISA

### Cited Applications:

WB, IHC, IF, IP

### Species Specificity:

human, mouse, rat

### Cited Species:

human, mouse

**Note-IHC: suggested antigen retrieval with TE buffer pH 9.0; (\*) Alternatively, antigen retrieval may be performed with citrate buffer pH 6.0**

### Positive Controls:

WB: HeLa cells, HepG2 cells, NCI-H1299 cells

IP: HeLa cells,

IHC: human breast cancer tissue, human lung cancer tissue, human kidney tissue

IF/ICC: HeLa cells, HepG2 cells

## Background Information

SLC25A1, also known as CIC or CTP, is a mitochondrial citrate transporter that exports citrate from the mitochondria to the cytosol. SLC25A1 is highly expressed in several tumor types. Recently it has been identified as a novel transcriptional target of mutant p53 and a negative tumor prognostic marker. In addition, defects in SLC25A1 has been found as a cause of combined D-2- and L-2-hydroxyglutaric aciduria. This antibody specifically recognized the endogenous SLC25A1; no protein was detected in cells from subjects containing two alleles with truncating mutations with this antibody. (24681808, 23561848)

## Notable Publications

Author	Pubmed ID	Journal	Application
Andromachi Pouikli	36278281	EMBO J	WB
Ying Yang	34839347	Cell Death Dis	WB, IHC
Weiwei Liu	35585086	Nat Commun	WB, IP

## Storage

### Storage:

Store at -20°C. Stable for one year after shipment.

### Storage Buffer:

PBS with 0.02% sodium azide and 50% glycerol, pH7.3

Aliquoting is unnecessary for -20°C storage

\*\*\* 20ul sizes contain 0.1% BSA

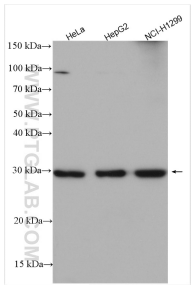
For technical support and original validation data for this product please contact:

T: 1 (888) 4PTGLAB (1-888-478-4522) (toll free in USA), or 1(312) 455-8498 (outside USA)

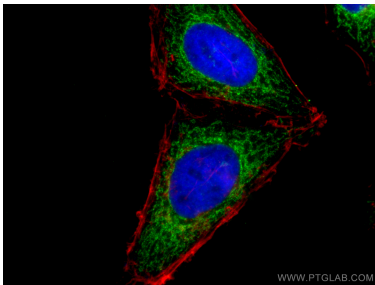
E: [proteintech@ptglab.com](mailto:proteintech@ptglab.com)  
W: [ptglab.com](http://ptglab.com)

This product is exclusively available under Proteintech Group brand and is not available to purchase from any other manufacturer.

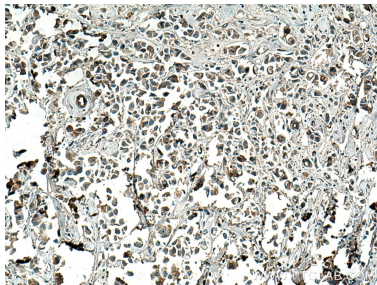
Selected Validation Data



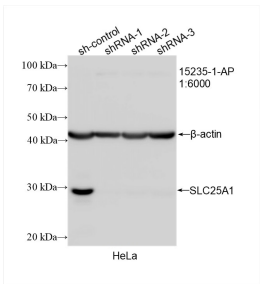
Various lysates were subjected to SDS PAGE followed by western blot with 15235-1-AP (SLC25A1 antibody) at dilution of 1:2000 incubated at room temperature for 1.5 hours.



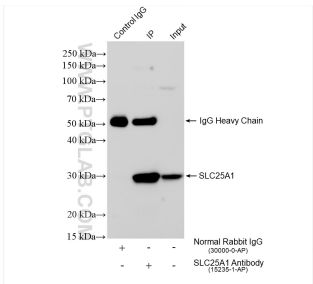
Immunofluorescent analysis of (4% PFA) fixed HeLa cells using 15235-1-AP (SLC25A1 antibody), at dilution of 1:200 and Coralite®488-Conjugated AffiniPure Goat Anti-Rabbit IgG(H+L).



Immunohistochemical analysis of paraffin-embedded human breast cancer tissue slide using 15235-1-AP (SLC25A1 antibody) at dilution of 1:200 (under 10x lens). Heat mediated antigen retrieval with Tris-EDTA buffer (pH 9.0).



WB result of SLC25A1 antibody (15235-1-AP; 1:6000; incubated at room temperature for 1.5 hours) with sh-Control and sh-SLC25A1 transfected HeLa cells.



IP result of anti-SLC25A1 (IP:15235-1-AP, 4ug; Detection:15235-1-AP 1:5000) with HeLa cells lysate 1400 ug.