

For Research Use Only

# Elastin Polyclonal antibody

Catalog Number: 15257-1-AP **5 Publications**



## Basic Information

**Catalog Number:**

15257-1-AP

**Size:**

150ul, Concentration: 333 µg/ml by Nanodrop and 333 µg/ml by Bradford method using BSA as the standard;

**Source:**

Rabbit

**Isotype:**

IgG

**Immunogen Catalog Number:**

AG7179

**GenBank Accession Number:**

BC065566

**GeneID (NCBI):**

2006

**Full Name:**

elastin

**Calculated MW:**

68 kDa

**Observed MW:**

60-70 kDa

**Purification Method:**

Antigen affinity purification

**Recommended Dilutions:**

WB 1:1000-1:5000

IP 0.5-4.0 ug for IP and 1:200-1:1000 for WB

IHC 1:500-1:2000

## Applications

**Tested Applications:**

IHC, IP, WB, ELISA

**Cited Applications:**

WB

**Species Specificity:**

human

**Cited Species:**

human

**Note-IHC: suggested antigen retrieval with TE buffer pH 9.0; (\*) Alternatively, antigen retrieval may be performed with citrate buffer pH 6.0**

**Positive Controls:**

WB: human artery tissue,

IP: human placenta tissue,

IHC: human lung tissue, human skin cancer tissue

## Background Information

Elastic fibers are an abundant and integral part of many extracellular matrices, in which they provide the elastic properties to tissues such as arterial, lung, and skin. Elastic fibers are consisting of an elastin core surrounded by a mantle of fibrillin-rich microfibrils (PMID: 12082143). Elastin is an extremely durable, insoluble biopolymer formed through the lysine-mediated crosslinking of its soluble precursor tropoelastin, which is an approximately 60-70 kDa protein (PMID: 15837523). Deletions and mutations in the elastin gene (ELN) are associated with supravalvular aortic stenosis (SVAS) and autosomal dominant cutis laxa.

## Notable Publications

Author	Pubmed ID	Journal	Application
Avinash Soundararajan	34831087	Cells	WB
Jing Ge	29019707	Am J Respir Cell Mol Biol	WB
Tsai-Der Chuang	26017148	Am J Physiol Cell Physiol	WB

## Storage

**Storage:**

Store at -20°C. Stable for one year after shipment.

**Storage Buffer:**

PBS with 0.02% sodium azide and 50% glycerol pH 7.3.

Aliquoting is unnecessary for -20°C storage

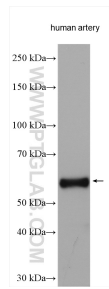
For technical support and original validation data for this product please contact:

T: 1 (888) 4PTGLAB (1-888-478-4522) (toll free in USA), or 1(312) 455-8498 (outside USA)

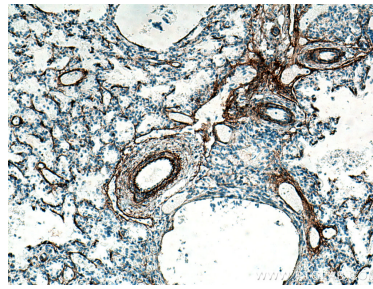
E: [proteintech@ptglab.com](mailto:proteintech@ptglab.com)  
W: [ptglab.com](http://ptglab.com)

**This product is exclusively available under Proteintech Group brand and is not available to purchase from any other manufacturer.**

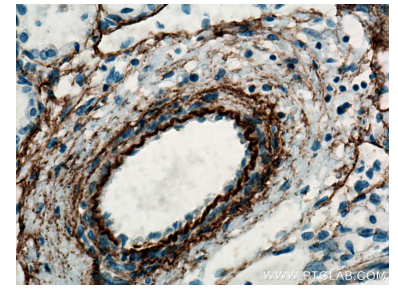
## Selected Validation Data



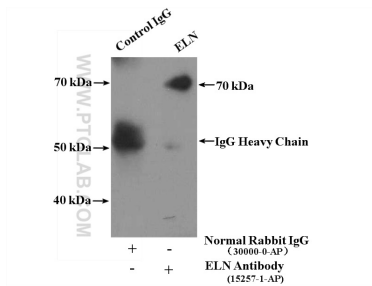
Human artery tissue were subjected to SDS PAGE followed by western blot with 15257-1-AP (Elastin antibody) at dilution of 1:5000 incubated at room temperature for 1.5 hours.



Immunohistochemical analysis of paraffin-embedded human lung tissue slide using 15257-1-AP (Elastin antibody) at dilution of 1:1000 (under 10x lens). Heat mediated antigen retrieval with Tris-EDTA buffer (pH 9.0).



Immunohistochemical analysis of paraffin-embedded human lung tissue slide using 15257-1-AP (Elastin antibody) at dilution of 1:1000 (under 40x lens). Heat mediated antigen retrieval with Tris-EDTA buffer (pH 9.0).



IP result of anti-Elastin (IP:15257-1-AP, 4ug; Detection:15257-1-AP 1:300) with human placenta tissue lysate 4000 ug.