

For Research Use Only

KIF1B Polyclonal antibody

Catalog Number: 15263-1-AP

Featured Product

7 Publications



Basic Information

Catalog Number:

15263-1-AP

Size:

150ul, Concentration: 360 ug/ml by Nanodrop;

Source:

Rabbit

Isotype:

IgG

Immunogen Catalog Number:

AG7263

GenBank Accession Number:

BC001415

GeneID (NCBI):

23095

UNIPROT ID:

O60333

Full Name:

kinesin family member 1B

Calculated MW:

204 kDa

Observed MW:

199 kDa, 204 kDa

Purification Method:

Antigen affinity purification

Recommended Dilutions:

WB: 1:500-1:1000

IP: 0.5-4.0 ug for 1.0-3.0 mg of total protein lysate

IHC: 1:50-1:500

Applications

Tested Applications:

WB, IP, IHC, ELISA

Cited Applications:

WB, IF, IP

Species Specificity:

human, mouse, rat

Cited Species:

human, mouse, rat

Note-IHC: suggested antigen retrieval with TE buffer pH 9.0; (*) Alternatively, antigen retrieval may be performed with citrate buffer pH 6.0

Positive Controls:

WB : HeLa cells, HEK-293 cells

IP : HeLa cells,

IHC : human liver cancer tissue, human skeletal muscle tissue, mouse brain tissue

Notable Publications

Author	Pubmed ID	Journal	Application
Yiyuan Kang	34772551	J Hazard Mater	IP
Kelsey Michelle Wells	35587649	Elife	IF
Vinicius Toledo Ribas	33637688	Cell Death Dis	WB

Storage

Storage:

Store at -20°C. Stable for one year after shipment.

Storage Buffer:

PBS with 0.02% sodium azide and 50% glycerol, pH7.3

Aliquoting is unnecessary for -20°C storage

*** 20ul sizes contain 0.1% BSA

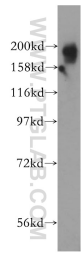
For technical support and original validation data for this product please contact:

T: 1 (888) 4PTGLAB (1-888-478-4522) (toll free in USA), or 1(312) 455-8498 (outside USA)

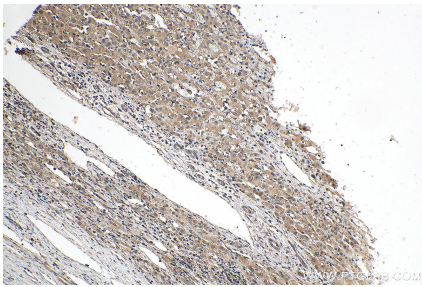
E: proteintech@ptglab.com
W: ptglab.com

This product is exclusively available under Proteintech Group brand and is not available to purchase from any other manufacturer.

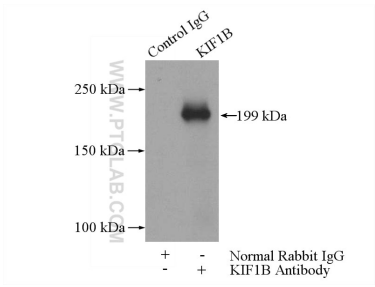
Selected Validation Data



HeLa cells were subjected to SDS PAGE followed by western blot with 15263-1-AP (KIF1B antibody) at dilution of 1:500 incubated at room temperature for 1.5 hours.



Immunohistochemical analysis of paraffin-embedded human liver cancer tissue slide using 15263-1-AP (KIF1B antibody) at dilution of 1:200 (under 10x lens). Heat mediated antigen retrieval with Tris-EDTA buffer (pH 9.0).



IP result of anti-KIF1B (IP:15263-1-AP, 5ug; Detection:15263-1-AP 1:700) with HeLa cells lysate 2000ug.