

For Research Use Only

COLEC11 Polyclonal ANTIBODY



Catalog Number: 15269-1-AP **5 Publications**

Basic Information

Catalog Number:

15269-1-AP

Size:

150UL, Concentration: 420 µg/ml by Bradford method using BSA as the standard;

Source:

Rabbit

Isotype:

IgG

Immunogen Catalog Number:

AG7374

GenBank Accession Number:

BC000078

GeneID (NCBI):

78989

Full Name:

collectin sub-family member 11

Calculated MW:

29 kDa

Observed MW:

34 kDa

Purification Method:

Antigen affinity purification

Recommended Dilutions:

WB 1:500-1:1000

IP 0.5-4.0 µg for IP and 1:500-1:1000 for WB

IHC 1:50-1:500

IF 1:20-1:200

Applications

Tested Applications:

IF, IHC, IP, WB, ELISA

Cited Applications:

FC, IF, IHC, WB

Species Specificity:

human, mouse, rat

Cited Species:

human, mouse

Note-IHC: suggested antigen retrieval with TE buffer pH 9.0; (*) Alternatively, antigen retrieval may be performed with citrate buffer pH 6.0

Positive Controls:

WB: mouse liver tissue, human plasma tissue, rat liver tissue

IP: mouse liver tissue,

IHC: human liver tissue,

IF: ATCD5 cells,

Background Information

COLEC11, also named as CL-K1 and Collectin-11, belongs to the COLEC10/COLEC11 family. It is a lectin that binds to various sugars: fucose > mannose. It does not bind to glucose, N-acetylglucosamine and N-acetylgalactosamine. COLEC11 binds to LPS. COLEC11 and MASP1 are two genes in the lectin complement pathway, they are mutated in 3MC syndrome, implicating this diverse inflammation-chemotaxis cascade in the etiology of human developmental disorders. COLEC11 serves as a guidance cue for neural crest cell migration.(PMID:21258343)

Notable Publications

Author	Pubmed ID	Journal	Application
Rafael Bayarri-Olmos	30323815	Front Immunol	WB
Anne Rosbjerg	24683193	J Immunol	WB
Hongmei Lu	31384238	Clin Proteomics	WB

Storage

Storage:

Store at -20°C. Stable for one year after shipment.

Storage Buffer:

PBS with 0.02% sodium azide and 50% glycerol pH 7.3.

Aliquoting is unnecessary for -20°C storage

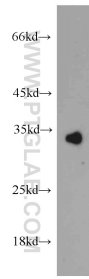
For technical support and original validation data for this product please contact:

T: 1 (888) 4PTGLAB (1-888-478-4522) (toll free in USA), or 1(312) 455-8498 (outside USA)

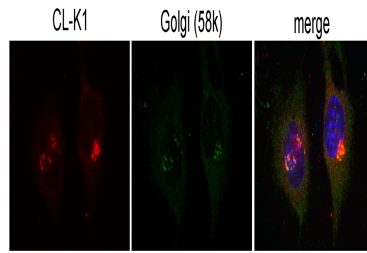
E: proteintech@ptglab.com
W: ptglab.com

This product is exclusively available under Proteintech Group brand and is not available to purchase from any other manufacturer.

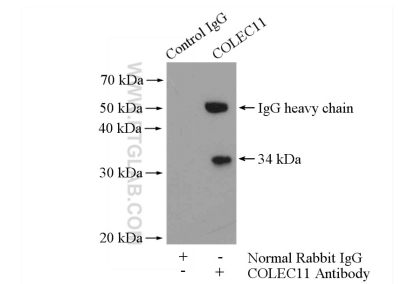
Selected Validation Data



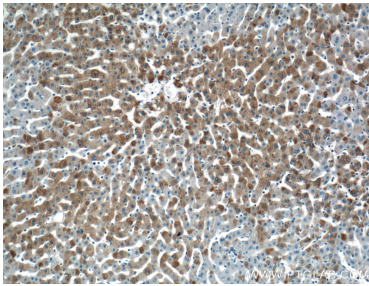
mouse liver tissue were subjected to SDS PAGE followed by western blot with 15269-1-AP (COLEC11 antibody) at dilution of 1:500 incubated at room temperature for 1.5 hours.



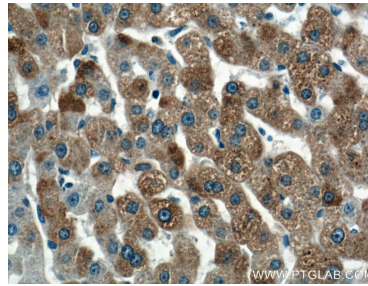
IF result (confocal image) of CL-K1 in ATCD5 cell show Golgi localization from Prof. Philip L. Beales.



IP Result of anti-COLEC11 (IP:15269-1-AP, 4ug; Detection:15269-1-AP 1:500) with mouse liver tissue lysate 6400ug.



Immunohistochemical analysis of paraffin-embedded human liver tissue slide using 15269-1-AP (COLEC11 Antibody) at dilution of 1:200 (under 10x lens).



Immunohistochemical analysis of paraffin-embedded human liver tissue slide using 15269-1-AP (COLEC11 Antibody) at dilution of 1:200 (under 40x lens).