

For Research Use Only

# ATP6V1E1 Polyclonal antibody

Catalog Number: 15280-1-AP

Featured Product

11 Publications



## Basic Information

### Catalog Number:

15280-1-AP

### Size:

150ul, Concentration: 600 ug/ml by Nanodrop;

### Source:

Rabbit

### Isotype:

IgG

### Immunogen Catalog Number:

AG7399

### GenBank Accession Number:

BC004443

### GeneID (NCBI):

529

### UNIPROT ID:

P36543

### Full Name:

ATPase, H<sup>+</sup> transporting, lysosomal 31kDa, V1 subunit E1

### Calculated MW:

26 kDa

### Observed MW:

31 kDa

### Purification Method:

Antigen affinity purification

### Recommended Dilutions:

WB: 1:1000-1:6000

IP: 0.5-4.0 ug for 1.0-3.0 mg of total protein lysate

IHC: 1:50-1:500

## Applications

### Tested Applications:

WB, IP, IHC, ELISA

### Cited Applications:

WB, IHC, IF

### Species Specificity:

human, mouse, rat

### Cited Species:

human, mouse, pig

**Note-IHC: suggested antigen retrieval with TE buffer pH 9.0; (\*) Alternatively, antigen retrieval may be performed with citrate buffer pH 6.0**

### Positive Controls:

**WB**: HeLa cells, human liver tissue, human brain tissue, mouse brain tissue, HEK-293 cells

**IP**: mouse brain tissue,

**IHC**: mouse testis tissue, human testis tissue, mouse kidney tissue, rat kidney tissue

## Background Information

ATP6V1E1, also named as ATP6E, ATP6E2 and p31, belongs to the V-ATPase E subunit family. It is a subunit of the peripheral V1 complex of vacuolar ATPase essential for assembly or catalytic function. V-ATPase is responsible for acidifying a variety of intracellular compartments in eukaryotic cells. V-ATPase and the lack of mycobacterial phagosome acidification are directly attributed to the Mtb protein tyrosine phosphatase PtpA.

## Notable Publications

Author	Pubmed ID	Journal	Application
Lanxin Yuan	34835488	Microorganisms	WB
Dolma Choezom	35050379	J Cell Sci	WB
Edoardo Ratto	35977928	Nat Commun	WB

## Storage

### Storage:

Store at -20°C. Stable for one year after shipment.

### Storage Buffer:

PBS with 0.02% sodium azide and 50% glycerol, pH7.3

Aliquoting is unnecessary for -20°C storage

\*\*\* 20ul sizes contain 0.1% BSA

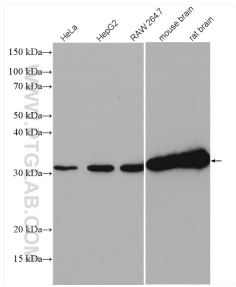
For technical support and original validation data for this product please contact:

T: 1 (888) 4PTGLAB (1-888-478-4522) (toll free in USA), or 1(312) 455-8498 (outside USA)

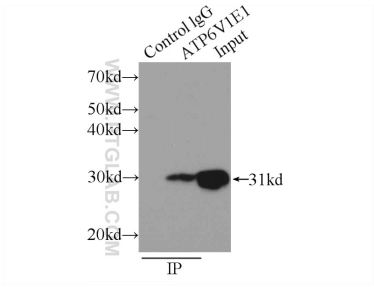
E: [proteintech@ptglab.com](mailto:proteintech@ptglab.com)  
W: [ptglab.com](http://ptglab.com)

This product is exclusively available under Proteintech Group brand and is not available to purchase from any other manufacturer.

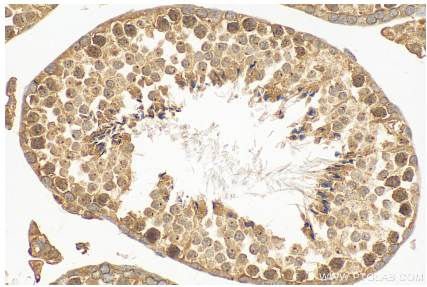
Selected Validation Data



HeLa cells were subjected to SDS PAGE followed by western blot with 15280-1-AP (ATP6V1E1 antibody) at dilution of 1:3000 incubated at room temperature for 1.5 hours.



IP result of anti-ATP6V1E1 (IP:15280-1-AP, 3ug; Detection:15280-1-AP 1:500) with mouse brain tissue lysate 6000ug.



Immunohistochemical analysis of paraffin-embedded mouse testis tissue slide using 15280-1-AP (ATP6V1E1 antibody) at dilution of 1:200 (under 40x lens).