

For Research Use Only

HSP60 Polyclonal antibody

Catalog Number: 15282-1-AP

Featured Product

160 Publications



Basic Information

Catalog Number:

15282-1-AP

Size:

150ul, Concentration: 1000 ug/ml by Nanodrop;

Source:

Rabbit

Isotype:

IgG

Immunogen Catalog Number:

AG7401

GenBank Accession Number:

BC003030

GeneID (NCBI):

3329

UNIPROT ID:

P10809

Full Name:

heat shock 60kDa protein 1 (chaperonin)

Calculated MW:

61 kDa

Observed MW:

60 kDa

Purification Method:

Antigen affinity purification

Recommended Dilutions:

WB: 1:2000-1:16000

IP: 0.5-4.0 ug for 1.0-3.0 mg of total protein lysate

IHC: 1:50-1:500

IF/ICC: 1:50-1:500

FC (Intra): 0.40 ug per 10⁶ cells in a 100 µl suspension

Applications

Tested Applications:

WB, IHC, IF/ICC, FC (Intra), IP, ELISA

Cited Applications:

WB, IHC, IF, IP, CoIP, ELISA

Species Specificity:

human, mouse, rat

Cited Species:

human, mouse, rat, pig, chicken, zebrafish, goat, yeast, fish, duck

Note-IHC: suggested antigen retrieval with TE buffer pH 9.0; (*) Alternatively, antigen retrieval may be performed with citrate buffer pH 6.0

Positive Controls:

WB: HEK-293 cells, HepG2 cells, NIH/3T3 cells, HeLa, mouse heart, rat heart

IP: HEK-293 cells,

IHC: human lung cancer tissue,

IF/ICC: HeLa cells,

FC (Intra): HepG2 cells,

Background Information

HSPD1, also known as HSP60, belongs to the chaperonin family and acts as a chaperone to enhance cell survival under physiological stresses. Hsp60 has been shown to be connected with many aspects of cell functions such as protein folding and assembling of polypeptide chains in mitochondria. Recently it has been reported that HSP60 is associated with apoptosis or inhibition of cancer cell growth. (21822415)

Notable Publications

Author	Pubmed ID	Journal	Application
Beiwu Lan	36116558	Exp Cell Res	WB
Jianli Tang	36106732	mBio	WB,IF,IP
Panayotis Pachnis	36044570	Sci Adv	WB

Storage

Storage:

Store at -20°C. Stable for one year after shipment.

Storage Buffer:

PBS with 0.02% sodium azide and 50% glycerol, pH7.3

Aliquoting is unnecessary for -20°C storage

*** 20ul sizes contain 0.1% BSA

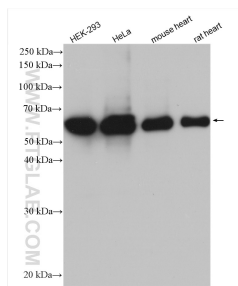
For technical support and original validation data for this product please contact:

T: 1 (888) 4PTGLAB (1-888-478-4522) (toll free in USA), or 1(312) 455-8498 (outside USA)

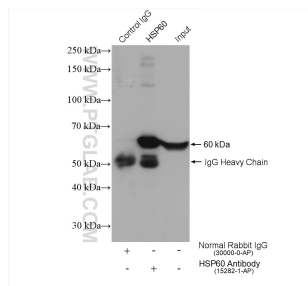
E: proteintech@ptglab.com
W: ptglab.com

This product is exclusively available under Proteintech Group brand and is not available to purchase from any other manufacturer.

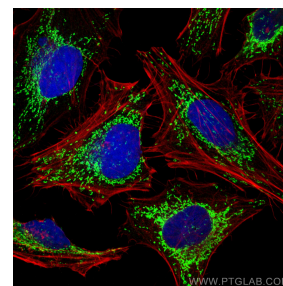
Selected Validation Data



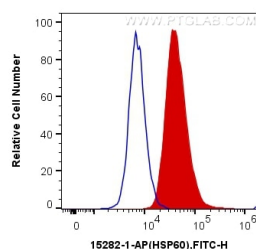
Various lysates were subjected to SDS PAGE followed by western blot with 15282-1-AP (HSP60 antibody) at dilution of 1:8000 incubated at room temperature for 1.5 hours.



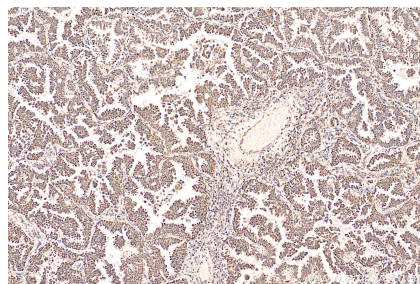
IP result of anti-HSP60 (IP:15282-1-AP, 4ug; Detection:15282-1-AP 1:10000) with HEK-293 cells lysate 1800 ug.



Immunofluorescent analysis of (4% PFA) fixed HeLa cells using HSP60 antibody (15282-1-AP) at dilution of 1:200 and CoraLite®488-Conjugated Goat Anti-Rabbit IgG(H+L), (CL594-Phalloidin, red).



1X10⁶ HepG2 cells were intracellularly stained with 0.4 ug Anti-Human HSP60 (15282-1-AP) and CoraLite®488-Conjugated Goat Anti-Rabbit IgG(H+L) at dilution 1:1000 (red), or 0.4 ug x. Cells were fixed with 4% PFA and permeabilized with Intracellular Staining Permeabilization Wash Buffer.



Immunohistochemical analysis of paraffin-embedded human lung cancer tissue slide using 15282-1-AP (HSP60 antibody) at dilution of 1:200 (under 10x lens). Heat mediated antigen retrieval with Tris-EDTA buffer (pH 9.0).