

For Research Use Only

ALDH2 Polyclonal antibody

Catalog Number: 15310-1-AP

Featured Product

34 Publications



Basic Information

Catalog Number: 15310-1-AP	GenBank Accession Number: BC002967	Purification Method: Antigen affinity purification
Size: 150ul , Concentration: 400 µg/ml by Nanodrop and 267 µg/ml by Bradford method using BSA as the standard;	GeneID (NCBI): 217	Recommended Dilutions: WB 1:1000-1:4000 IP 0.5-4.0 ug for IP and 1:500-1:2000 for WB
Source: Rabbit	Full Name: aldehyde dehydrogenase 2 family (mitochondrial)	IHC 1:50-1:500 IF 1:50-1:500
Isotype: IgG	Calculated MW: 56 kDa	
Immunogen Catalog Number: AG7452	Observed MW: 50-55 kDa	

Applications

Tested Applications:

IF, IHC, IP, WB, ELISA

Cited Applications:

IF, IHC, IP, WB

Species Specificity:

human, mouse, rat

Cited Species:

human, mouse, pig, rat

Note-IHC: suggested antigen retrieval with TE buffer pH 9.0; (*) Alternatively, antigen retrieval may be performed with citrate buffer pH 6.0

Positive Controls:

WB: mouse testis tissue, human heart tissue, human liver tissue, mouse lung tissue, mouse skeletal muscle tissue, rat lung tissue, HEK-293 cells, K-562 cells

IP: mouse lung tissue,

IHC: human liver tissue, human heart tissue

IF: A549 cells,

Background Information

Acetaldehyde dehydrogenase is the next enzyme after alcohol dehydrogenase in the major pathway of alcohol metabolism. It mediates NADP⁺-dependent oxidation of aldehydes into acids during detoxification of alcohol-derived acetaldehyde; lipid peroxidation; and metabolism of corticosteroids, biogenic amines and neurotransmitters. Genetic variation in ALDH2 is responsible for individual differences in responses to drinking alcohol. Thus, the absence of this enzyme is linked to alcohol intolerance and a reduced risk for alcoholism-related liver disease.

Notable Publications

Author	Pubmed ID	Journal	Application
Yusuke Amanuma	26374466	Sci Rep	WB
Xiaojuan Chao	34486131	Alcohol Clin Exp Res	WB
Shanshan Zhong	30375985	J Clin Invest	WB,IP,IF

Storage

Storage:

Store at -20°C. Stable for one year after shipment.

Storage Buffer:

PBS with 0.02% sodium azide and 50% glycerol pH 7.3.

Aliquoting is unnecessary for -20°C storage

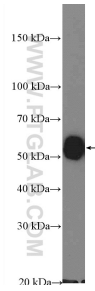
For technical support and original validation data for this product please contact:

T: 1 (888) 4PTGLAB (1-888-478-4522) (toll free in USA), or 1(312) 455-8498 (outside USA)

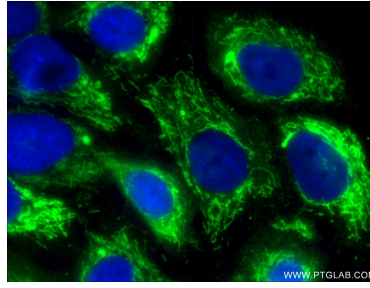
E: proteintech@ptglab.com
W: ptglab.com

This product is exclusively available under Proteintech Group brand and is not available to purchase from any other manufacturer.

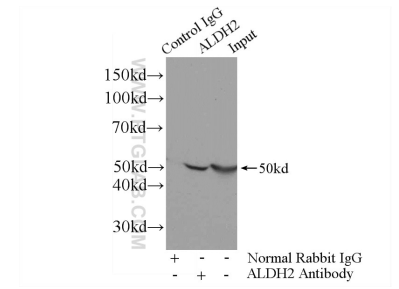
Selected Validation Data



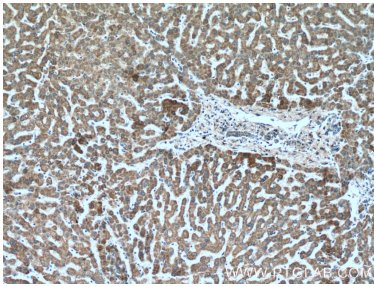
mouse testis tissue were subjected to SDS PAGE followed by western blot with 15310-1-AP (ALDH2 Antibody) at dilution of 1:2000 incubated at room temperature for 1.5 hours.



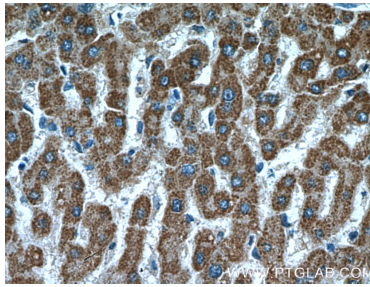
Immunofluorescent analysis of (-20°C Ethanol) fixed A549 cells using 15310-1-AP (ALDH2 antibody) at dilution of 1:50 and Alexa Fluor 488-conjugated AffiniPure Goat Anti-Rabbit IgG(H+L).



IP Result of anti-ALDH2 (IP:15310-1-AP, 4ug; Detection:15310-1-AP 1:1000) with mouse lung tissue lysate 2800ug.



Immunohistochemical analysis of paraffin-embedded human liver tissue slide using 15310-1-AP (ALDH2 Antibody) at dilution of 1:200 (under 10x lens).



Immunohistochemical analysis of paraffin-embedded human liver tissue slide using 15310-1-AP (ALDH2 Antibody) at dilution of 1:200 (under 40x lens).