

For Research Use Only

PAM16 Polyclonal ANTIBODY



Catalog Number: 15321-1-AP

1 Publications

Basic Information

Catalog Number:
15321-1-AP

Size:
39 µg/150 µl

Source:
Rabbit

Isotype:
IgG

Purification Method:
Antigen affinity purification

Immunogen Catalog Number:
AG0970

GenBank Accession Number:
BC005024

GeneID (NCBI):
51025

Full Name:
mitochondria-associated protein involved in
granulocyte-macrophage colony-stimulating
factor signal transduction

Calculated MW:
14 kDa

Observed MW:
14 kDa

Recommended Dilutions:
WB 1:200-1:1000

Applications

Tested Applications:
WB, ELISA

Cited Applications:
IHC

Species Specificity:
human

Cited Species:
human

**Note: suggested antigen retrieval with TE
buffer pH 9.0; (*) Alternatively, antigen
retrieval may be performed with citrate
buffer pH 6.0**

Positive Controls:

WB : HepG2 cells;

Background Information

PAM16, also named as Magmas, TIM16 and TIMM16, is regulates ATP-dependent protein translocation into the mitochondrial matrix. The MW of PAM16 is about 14-16 kDa in WB detection.

Notable Publications

Author	Pubmed ID	Journal	Application
Kajun Di	30414099	J Neurooncol	IHC

Storage

Storage:

Store at -20°C. Stable for one year after shipment.

Storage Buffer:

PBS with 0.1% sodium azide and 50% glycerol pH 7.3.

Aliquoting is unnecessary for -20°C storage

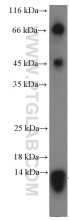
For technical support and original validation data for this product please contact:

T: 1 (888) 4PTGLAB (1-888-478-4522) (toll free in USA), or 1(312) 455-8498 (outside USA)

E: proteintech@ptglab.com
W: ptglab.com

This product is exclusively available under Proteintech Group brand and is not available to purchase from any other manufacturer.

Selected Validation Data



HepG2 cells were subjected to SDS PAGE followed by western blot with 15321-1-AP (PAM16 Antibody) at dilution of 1:300 incubated at room temperature for 1.5 hours