

For Research Use Only

POLR2F Polyclonal antibody

Catalog Number: 15334-1-AP

Featured Product

4 Publications



Basic Information

Catalog Number:

15334-1-AP

Size:

150ul, Concentration: 350 ug/ml by Nanodrop and 267 ug/ml by Bradford method using BSA as the standard;

Source:

Rabbit

Isotype:

IgG

Immunogen Catalog Number:

AG7449

GenBank Accession Number:

BC003582

GeneID (NCBI):

5435

UNIPROT ID:

P61218

Full Name:

polymerase (RNA) II (DNA directed) polypeptide F

Calculated MW:

14 kDa

Observed MW:

14 kDa

Purification Method:

Antigen affinity purification

Recommended Dilutions:

WB 1:2000-1:16000

IHC 1:20-1:200

IF/ICC 1:400-1:1600

Applications

Tested Applications:

WB, IHC, IF/ICC, ELISA

Cited Applications:

WB

Species Specificity:

human, mouse, rat

Cited Species:

mouse

Note-IHC: suggested antigen retrieval with TE buffer pH 9.0; (*) Alternatively, antigen retrieval may be performed with citrate buffer pH 6.0

Positive Controls:

WB : HeLa cells, NIH/3T3 cells, C6 cells

IHC : human cervical cancer tissue, human placenta tissue

IF/ICC : A431 cells,

Notable Publications

Author	Pubmed ID	Journal	Application
Hui Wang	36171202	Nat Commun	WB
Yuanjun Li	36113479	Mol Cell	WB
Yongpeng Jiang	36443871	Genome Biol	

Storage

Storage:

Store at -20°C. Stable for one year after shipment.

Storage Buffer:

PBS with 0.02% sodium azide and 50% glycerol pH 7.3.

Aliquoting is unnecessary for -20°C storage

*** 20ul sizes contain 0.1% BSA

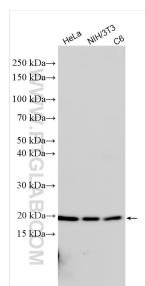
For technical support and original validation data for this product please contact:

T: 1 (888) 4PTGLAB (1-888-478-4522) (toll free in USA), or 1(312) 455-8498 (outside USA)

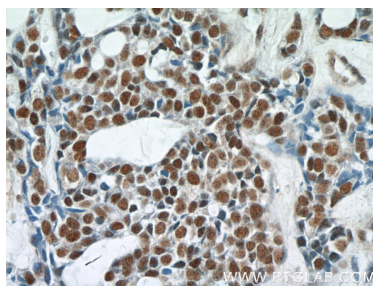
E: proteintech@ptglab.com
W: ptglab.com

This product is exclusively available under Proteintech Group brand and is not available to purchase from any other manufacturer.

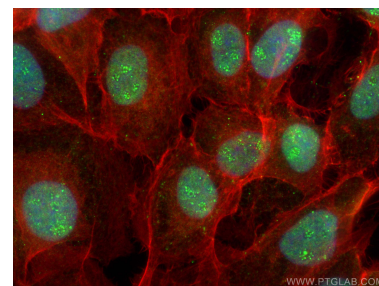
Selected Validation Data



Various lysates were subjected to SDS PAGE followed by western blot with 15334-1-AP (POLR2F antibody) at dilution of 1:8000 incubated at room temperature for 1.5 hours.



Immunohistochemical analysis of paraffin-embedded human cervical cancer tissue slide using 15334-1-AP (POLR2F Antibody) at dilution of 1:200 (under 40x Lens).



Immunofluorescent analysis of (4% PFA) fixed A431 cells using POLR2F antibody (15334-1-AP) at dilution of 1:800 and CoraLite®488-Conjugated Goat Anti-Rabbit IgG(H+L), CL594-phalloidin (red).