

For Research Use Only

MRPL9 Polyclonal antibody

Catalog Number: 15342-1-AP

5 Publications



Basic Information

Catalog Number:

15342-1-AP

Size:

150ul, Concentration: 260 ug/ml by Nanodrop and 207 ug/ml by Bradford method using BSA as the standard;

Source:

Rabbit

Isotype:

IgG

Immunogen Catalog Number:

AG7545

GenBank Accession Number:

BC004517

GeneID (NCBI):

65005

UNIPROT ID:

Q9BYD2

Full Name:

mitochondrial ribosomal protein L9

Calculated MW:

30 kDa

Observed MW:

26-28 kDa

Purification Method:

Antigen affinity purification

Recommended Dilutions:

WB: 1:500-1:2000

IHC: 1:50-1:500

IF/ICC: 1:200-1:800

Applications

Tested Applications:

WB, IHC, IF/ICC, ELISA

Cited Applications:

WB, IHC, IF, ColP

Species Specificity:

human, mouse, rat

Cited Species:

human

Note-IHC: suggested antigen retrieval with TE buffer pH 9.0; (*) Alternatively, antigen retrieval may be performed with citrate buffer pH 6.0

Positive Controls:

WB: HeLa cells, HepG2 cells, MCF-7 cells, PC-3 cells

IHC: human breast cancer tissue,

IF/ICC: HeLa cells,

Notable Publications

Author	Pubmed ID	Journal	Application
Hui-Min Zhang	36233293	Int J Mol Sci	WB,IHC,IF,ColP
Cong Xie	36684217	Front Surg	WB
Elena Lavdovskaia	38992089	Nat Struct Mol Biol	WB

Storage

Storage:

Store at -20°C. Stable for one year after shipment.

Storage Buffer:

PBS with 0.02% sodium azide and 50% glycerol, pH7.3

Aliquoting is unnecessary for -20°C storage

*** 20ul sizes contain 0.1% BSA

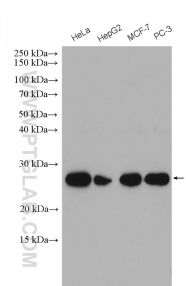
For technical support and original validation data for this product please contact:

T: 1 (888) 4PTGLAB (1-888-478-4522) (toll free in USA), or 1(312) 455-8498 (outside USA)

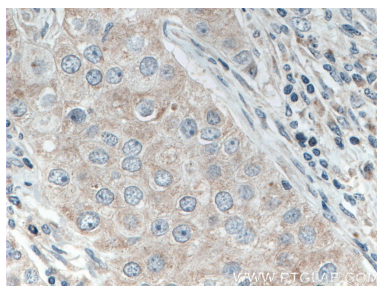
E: proteintech@ptglab.com
W: ptglab.com

This product is exclusively available under Proteintech Group brand and is not available to purchase from any other manufacturer.

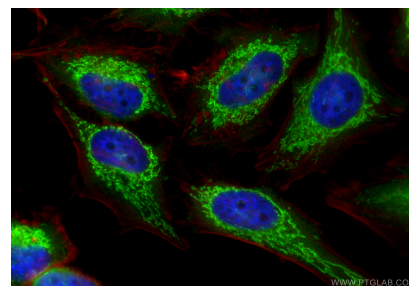
Selected Validation Data



Various lysates were subjected to SDS PAGE followed by western blot with 15342-1-AP (MRPL9 antibody) at dilution of 1:1000 incubated at room temperature for 1.5 hours.



Immunohistochemical analysis of paraffin-embedded human breast cancer tissue slide using 15342-1-AP (MRPL9 antibody) at dilution of 1:200 (under 40x lens. Heat mediated antigen retrieval with Tris-EDTA buffer (pH 9.0).



Immunofluorescent analysis of (4% PFA) fixed HeLa cells using MRPL9 antibody (15342-1-AP) at dilution of 1:400 and CoraLite®488-Conjugated Goat Anti-Rabbit IgG(H+L) (SA00013-2), CL594-Phalloidin (red).