

For Research Use Only

# Cyclophilin E Polyclonal antibody

Catalog Number: 15357-1-AP



## Basic Information

**Catalog Number:**

15357-1-AP

**Size:**

150ul , Concentration: 450 ug/ml by Nanodrop and 253 ug/ml by Bradford method using BSA as the standard;

**Source:**

Rabbit

**Isotype:**

IgG

**Immunogen Catalog Number:**

AG7603

**GenBank Accession Number:**

BC004898

**GeneID (NCBI):**

10450

**UNIPROT ID:**

Q9UNP9

**Full Name:**

peptidylprolyl isomerase E (cyclophilin E)

**Calculated MW:**

33 kDa

**Observed MW:**

33-38 kDa

**Purification Method:**

Antigen affinity purification

**Recommended Dilutions:**

WB 1:1000-1:5000

IF/ICC 1:50-1:500

## Applications

**Tested Applications:**

WB, IF/ICC, ELISA

**Species Specificity:**

human, mouse, rat

**Positive Controls:**

WB : BxPC-3 cells, HeLa cells, Jurkat cells

IF/ICC : HeLa cells,

## Background Information

Cyclophilin E (CypE), also known as Cyclophilin-33, Rotamase E, CYP33, PPIE, is an enzyme which belongs to the cyclophilin-type PPIase family of PPIase E subfamily (PMID: 15998457). Cyclophilin E negatively regulates influenza virus replication and transcription occurs by impairing the formation of the vRNP (PMID: 21887220). Additionally, Cyclophilin E plays an important role in osteoblast differentiation as a positive regulator by increasing the transcriptional activity of Runx2 (PMID: 37947627).

## Storage

**Storage:**

Store at -20°C. Stable for one year after shipment.

**Storage Buffer:**

PBS with 0.02% sodium azide and 50% glycerol, pH7.3

Aliquoting is unnecessary for -20°C storage

\*\*\* 20ul sizes contain 0.1% BSA

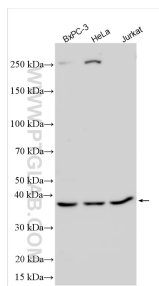
For technical support and original validation data for this product please contact:

T: 1 (888) 4PTGLAB (1-888-478-4522) (toll free in USA), or 1(312) 455-8498 (outside USA)

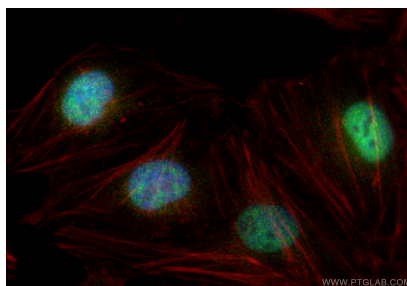
E: [proteintech@ptglab.com](mailto:proteintech@ptglab.com)  
W: [ptglab.com](http://ptglab.com)

This product is exclusively available under Proteintech Group brand and is not available to purchase from any other manufacturer.

## Selected Validation Data



Various lysates were subjected to SDS PAGE followed by western blot with 15357-1-AP (Cyclophilin E antibody) at dilution of 1:2500 incubated at room temperature for 1.5 hours.



Immunofluorescent analysis of (4% PFA) fixed HeLa cells using Cyclophilin E antibody (15357-1-AP) at dilution of 1:200 and CoraLite® 488-Conjugated Goat Anti-Rabbit IgG(H+L) (SA00013-2), CL594-Phalloidin (red).