

For Research Use Only

SURF1 Polyclonal ANTIBODY



Catalog Number: 15379-1-AP

Featured Product

1 Publications

Basic Information

Catalog Number:

15379-1-AP

Size:

150UL, Concentration: 173 µg/ml by Bradford method using BSA as the standard;

Source:

Rabbit

Isotype:

IgG

Immunogen Catalog Number:

AG3959

GenBank Accession Number:

BC028314

GeneID (NCBI):

6834

Full Name:

surfeit 1

Calculated MW:

33 kDa

Observed MW:

30-31 kDa

Purification Method:

Antigen affinity purification

Recommended Dilutions:

WB 1:500-1:2000

IP 0.5-4.0 µg for IP and 1:500-1:2000 for WB

IHC 1:20-1:200

IF 1:20-1:200

Applications

Tested Applications:

IF, IHC, IP, WB, ELISA

Cited Applications:

WB

Species Specificity:

human, mouse

Cited Species:

human

Note-IHC: suggested antigen retrieval with TE buffer pH 9.0; (*) Alternatively, antigen retrieval may be performed with citrate buffer pH 6.0

Positive Controls:

WB: human heart tissue,

IP: HeLa cells,

IHC: human heart tissue,

IF: HeLa cells,

Background Information

Notable Publications

Author	Pubmed ID	Journal	Application
Yuanyuan Li	29933018	Gene	WB

Storage

Storage:

Store at -20°C. Stable for one year after shipment.

Storage Buffer:

PBS with 0.02% sodium azide and 50% glycerol pH 7.3.

Aliquoting is unnecessary for -20°C storage

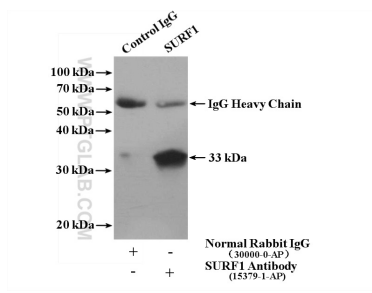
For technical support and original validation data for this product please contact:

T: 1 (888) 4PTGLAB (1-888-478-4522) (toll free in USA), or 1(312) 455-8498 (outside USA)

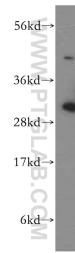
E: proteintech@ptglab.com
W: ptglab.com

This product is exclusively available under Proteintech Group brand and is not available to purchase from any other manufacturer.

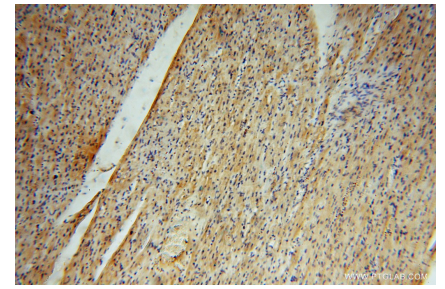
Selected Validation Data



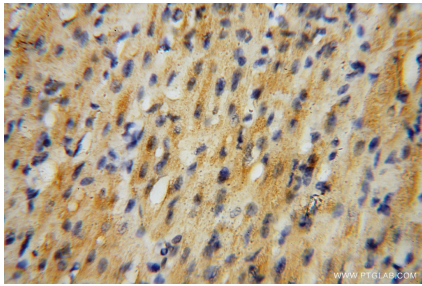
IP result of anti-SURF1 (IP:15379-1-AP, 4ug; Detection:15379-1-AP 1:1000) with HeLa cells lysate 3200 ug.



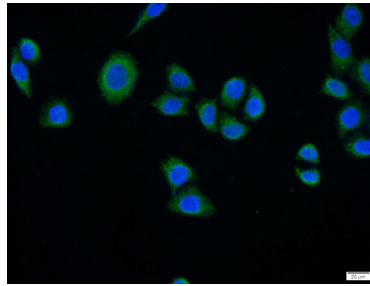
human heart tissue were subjected to SDS PAGE followed by western blot with 15379-1-AP (SURF1 antibody) at dilution of 1:500 incubated at room temperature for 1.5 hours.



Immunohistochemical analysis of paraffin-embedded human heart using 15379-1-AP (SURF1 antibody) at dilution of 1:50 (under 10x lens).



Immunohistochemical analysis of paraffin-embedded human heart using 15379-1-AP (SURF1 antibody) at dilution of 1:50 (under 40x lens).



Immunofluorescent analysis of HeLa cells using 15379-1-AP (SURF1 antibody) at dilution of 1:50 and Alexa Fluor 488-conjugated AffiniPure Goat Anti-Rabbit IgG(H+L).