

For Research Use Only

CEL Polyclonal antibody

Catalog Number: 15384-1-AP

Featured Product

2 Publications



Basic Information

Catalog Number:

15384-1-AP

Size:

150ul , Concentration: 500 µg/ml by Nanodrop and 233 µg/ml by Bradford method using BSA as the standard;

Source:

Rabbit

Isotype:

IgG

Immunogen Catalog Number:

AG5262

GenBank Accession Number:

BC042510

GeneID (NCBI):

1056

Full Name:

carboxyl ester lipase (bile salt-stimulated lipase)

Calculated MW:

79 kDa

Observed MW:

67 kDa

Purification Method:

Antigen affinity purification

Recommended Dilutions:

WB 1:500-1:3000

IF 1:10-1:100

Applications

Tested Applications:

IF, WB, ELISA

Cited Applications:

IF, WB

Species Specificity:

human, mouse, rat

Cited Species:

HUMAN

Positive Controls:

WB : human liver tissue, HeLa cells, mouse heart tissue, mouse liver tissue

IF : HeLa cells,

Background Information

Bile salt-activated lipase, previously named cholesterol esterase or bile salt-stimulated (or dependent) lipase, is a 74 kDa lipolytic enzyme capable of hydrolyzing cholesteryl esters, tri-, di-, and mono-acylglycerols, phospholipids, lysophospholipids, and ceramide(PMID:12454261). The same enzyme is present as a major protein in milk and as a minor constituent in liver, activated macrophages, and endothelial cells(PMID:11733511). Defects in CEL are a cause of maturity-onset diabetes of the young type 8 with exocrine dysfunction (MODY8)(PMID:16369531). The full length protein has 11 glycosylation sites. It has 2 isoforms produced by alternative splicing.

Notable Publications

Author	Pubmed ID	Journal	Application
Minghe Zhou	34643375	ACS Biomater Sci Eng	WB,IF
Matthew J Kolar	27509211	Biochemistry	WB

Storage

Storage:

Store at -20°C. Stable for one year after shipment.

Storage Buffer:

PBS with 0.02% sodium azide and 50% glycerol pH 7.3.

Aliquoting is unnecessary for -20°C storage

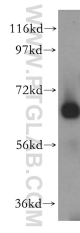
For technical support and original validation data for this product please contact:

T: 1 (888) 4PTGLAB (1-888-478-4522) (toll free in USA), or 1(312) 455-8498 (outside USA)

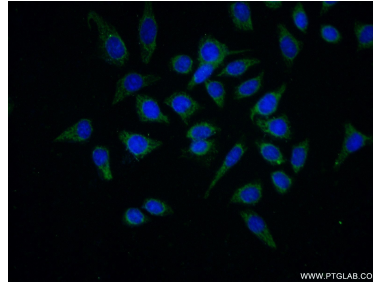
E: proteintech@ptglab.com
W: ptglab.com

This product is exclusively available under Proteintech Group brand and is not available to purchase from any other manufacturer.

Selected Validation Data



human liver tissue were subjected to SDS PAGE followed by western blot with 15384-1-AP (CEL antibody) at dilution of 1:500 incubated at room temperature for 1.5 hours.



Immunofluorescent analysis of (-20°C Ethanol) fixed HeLa cells using 15384-1-AP (CEL antibody) at dilution of 1:25 and Alexa Fluor 488-conjugated AffiniPure Goat Anti-Rabbit IgG(H+L).