

For Research Use Only

Connexin-43 Polyclonal antibody

Catalog Number: 15386-1-AP

Featured Product

35 Publications



Basic Information

Catalog Number:

15386-1-AP

Size:

150ul, Concentration: 333 µg/ml by Bradford method using BSA as the standard;

Source:

Rabbit

Isotype:

IgG

Immunogen Catalog Number:

AG6698

GenBank Accession Number:

BC026329

GeneID (NCBI):

2697

UNIPROT ID:

P17302

Full Name:

gap junction protein, alpha 1, 43kDa

Calculated MW:

43 kDa

Observed MW:

43-47 kDa

Purification Method:

Antigen affinity purification

Recommended Dilutions:

WB: 1:500-1:2000

IP: 0.5-4.0 µg for 1.0-3.0 mg of total protein lysate

IHC: 1:50-1:200

IF-P: 1:50-1:500

IF/ICC: 1:50-1:500

Applications

Tested Applications:

WB, IHC, IF/ICC, IF-P, IP, ELISA

Cited Applications:

WB, IHC, IF, IP, CoIP

Species Specificity:

human, mouse, rat

Cited Species:

human, mouse, rat, bovine

Note-IHC: suggested antigen retrieval with TE buffer pH 9.0; (*) Alternatively, antigen retrieval may be performed with citrate buffer pH 6.0

Positive Controls:

WB: HeLa cells,

IP: mouse heart tissue,

IHC: mouse heart tissue, human heart tissue

IF-P: mouse heart tissue,

IF/ICC: HeLa cells,

Background Information

Connexin-43 (Cx43, also known as gap junction alpha-1), a connexin family member, plays an essential role in gap junction communication that facilitates direct communication among adjacent cells (PMID: 12270943). Usually, six connexin proteins oligomerize into a hemi-channel or connexon during intercellular channel formation (PMID: 12270943). Mutations of Cx43 may cause a series of diseases such as oculodentodigital dysplasia (ODDD), syndactyly 3 (SDTY3), hypoplastic left heart syndrome 1 (HLHS1) and so on (PMID: 18161618, 1472936, 1147490).

Notable Publications

Author	Pubmed ID	Journal	Application
Xueling He	28969971	Prog Biophys Mol Biol	WB
E O Adegoke	30267989	Ecotoxicol Environ Saf	IF
Hsiang-Chun Lee	28935953	Sci Rep	WB,IP

Storage

Storage:

Store at -20°C. Stable for one year after shipment.

Storage Buffer:

PBS with 0.02% sodium azide and 50% glycerol, pH7.3

Aliquoting is unnecessary for -20°C storage

*** 20ul sizes contain 0.1% BSA

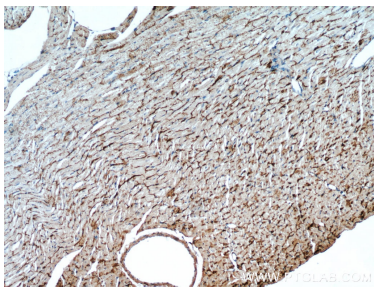
For technical support and original validation data for this product please contact:

T: 1 (888) 4PTGLAB (1-888-478-4522) (toll free in USA), or 1(312) 455-8498 (outside USA)

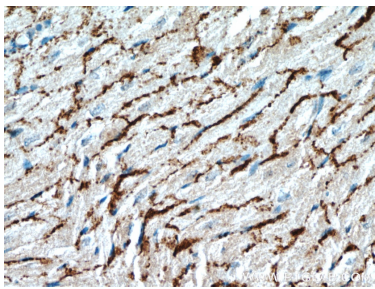
E: proteintech@ptglab.com
W: ptglab.com

This product is exclusively available under Proteintech Group brand and is not available to purchase from any other manufacturer.

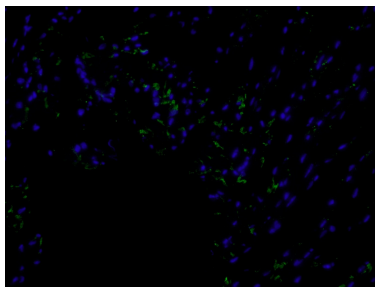
Selected Validation Data



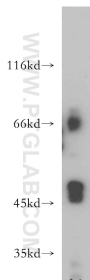
Immunohistochemical analysis of paraffin-embedded mouse heart using 15386-1-AP (GJA1 antibody) at dilution of 1:100 (under 10x lens).



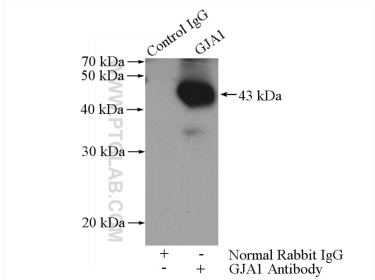
Immunohistochemical analysis of paraffin-embedded mouse heart using 15386-1-AP (GJA1 antibody) at dilution of 1:100 (under 40x lens).



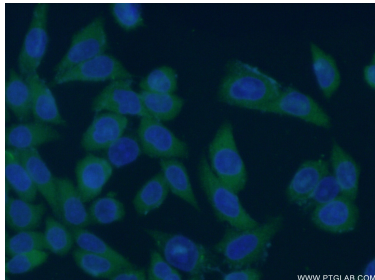
Immunofluorescent analysis of (4% PFA) fixed mouse heart tissue using 15386-1-AP (Connexin-43 antibody) at dilution of 1:50 and Alexa Fluor 488-conjugated Goat Anti-Rabbit IgG(H+L).



HeLa cells were subjected to SDS PAGE followed by western blot with 15386-1-AP (GJA1 antibody) at dilution of 1:500 incubated at room temperature for 1.5 hours.



IP result of anti-Connexin-43 (IP:15386-1-AP, 4ug; Detection:15386-1-AP 1:500) with mouse heart tissue lysate 3200ug.



Immunofluorescent analysis of (-20°C Ethanol) fixed HeLa cells using 15386-1-AP (Connexin-43 antibody) at dilution of 1:50 and Alexa Fluor 488-conjugated Goat Anti-Rabbit IgG(H+L).