

For Research Use Only

SEC13 Polyclonal antibody

Catalog Number: 15397-1-AP **4 Publications**



Basic Information

Catalog Number:

15397-1-AP

Size:

150ul , Concentration: 300 µg/ml by Nanodrop and 220 µg/ml by Bradford method using BSA as the standard;

Source:

Rabbit

Isotype:

IgG

Immunogen Catalog Number:

AG7610

GenBank Accession Number:

BC002634

GeneID (NCBI):

6396

Full Name:

SEC13 homolog (S. cerevisiae)

Calculated MW:

36 kDa

Observed MW:

36 kDa

Purification Method:

Antigen affinity purification

Recommended Dilutions:

WB 1:500-1:2000

IP 0.5-4.0 ug for IP and 1:500-1:2000

for WB

IHC 1:50-1:500

IF 1:10-1:100

Applications

Tested Applications:

IF, IHC, IP, WB, ELISA

Cited Applications:

WB

Species Specificity:

human, mouse, rat

Cited Species:

human, rat

Note-IHC: suggested antigen retrieval with TE buffer pH 9.0; (*) Alternatively, antigen retrieval may be performed with citrate buffer pH 6.0

Positive Controls:

WB : HepG2 cells, RAW 264.7 cells

IP : HepG2 cells,

IHC : mouse brain tissue, human lung tissue, mouse liver tissue, human ovary tissue, human testis tissue, human kidney tissue, human skin tissue, human spleen tissue, human placenta tissue

IF : HepG2 cells,

Background Information

SEC13 is a component of the nuclear pore complex (NPC) and the COPII coat. It is required for vesicle biogenesis from endoplasmic reticulum during the transport of proteins. Shuttling of SEC13 between the nucleus and the cytoplasm may couple and regulate functions between these two compartments. (PMID: 14517296; 16407955)

Notable Publications

Author	Pubmed ID	Journal	Application
C Teodorof	24825317	Neurobiol Dis	
Liling Niu	31239341	Proc Natl Acad Sci U S A	WB
Michael G Hanna	28851831	Proc Natl Acad Sci U S A	WB

Storage

Storage:

Store at -20°C. Stable for one year after shipment.

Storage Buffer:

PBS with 0.02% sodium azide and 50% glycerol pH 7.3.

Aliquoting is unnecessary for -20°C storage

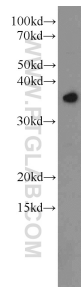
For technical support and original validation data for this product please contact:

T: 1 (888) 4PTGLAB (1-888-478-4522) (toll free in USA), or 1(312) 455-8498 (outside USA)

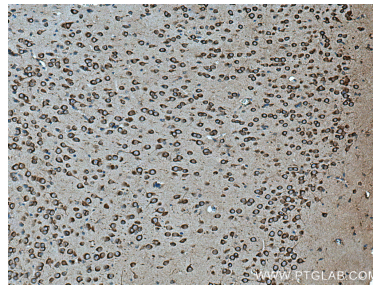
E: proteintech@ptglab.com
W: ptglab.com

This product is exclusively available under Proteintech Group brand and is not available to purchase from any other manufacturer.

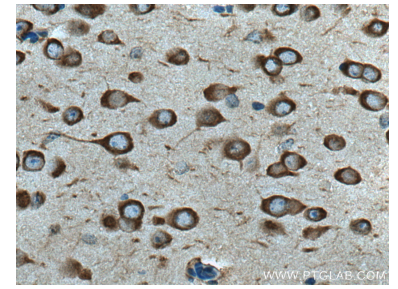
Selected Validation Data



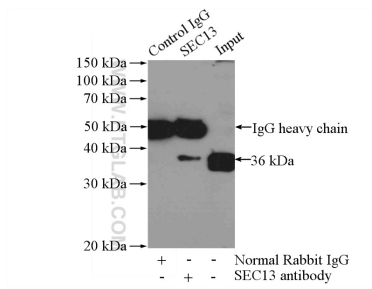
HepG2 cells were subjected to SDS PAGE followed by western blot with 15397-1-AP (SEC13 antibody) at dilution of 1:1000 incubated at room temperature for 1.5 hours.



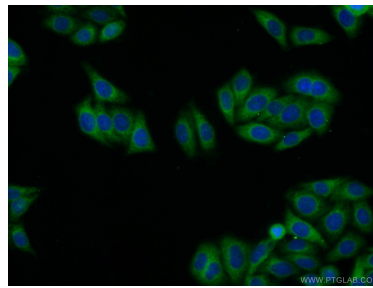
Immunohistochemical analysis of paraffin-embedded mouse brain tissue slide using 15397-1-AP (SEC13 antibody) at dilution of 1:200 (under 10x lens). Heat mediated antigen retrieval with Tris-EDTA buffer (pH 9.0).



Immunohistochemical analysis of paraffin-embedded mouse brain tissue slide using 15397-1-AP (SEC13 antibody) at dilution of 1:200 (under 40x lens). Heat mediated antigen retrieval with Tris-EDTA buffer (pH 9.0).



IP Result of anti-SEC13 (IP:15397-1-AP, 3ug; Detection:15397-1-AP 1:1000) with HepG2 cells lysate 3200ug.



Immunofluorescent analysis of HepG2 cells using 15397-1-AP (SEC13 antibody) at dilution of 1:25 and Alexa Fluor 488-conjugated AffiniPure Goat Anti-Rabbit IgG(H+L).