

For Research Use Only

YPEL3 Polyclonal antibody

Catalog Number: 15403-1-AP

Featured Product

4 Publications



Basic Information

Catalog Number:

15403-1-AP

Size:

150ul, Concentration: 427 ug/ml by Nanodrop and 427 ug/ml by Bradford method using BSA as the standard;

Source:

Rabbit

Isotype:

IgG

Immunogen Catalog Number:

AG7626

GenBank Accession Number:

BC005009

GeneID (NCBI):

83719

UNIPROT ID:

P61236

Full Name:

yippee-Like 3 (Drosophila)

Calculated MW:

14 kDa

Observed MW:

14 kDa

Purification Method:

Antigen affinity purification

Recommended Dilutions:

WB 1:500-1:2000

IHC 1:50-1:500

Applications

Tested Applications:

WB, IHC, ELISA

Cited Applications:

WB, IF, IHC

Species Specificity:

human, mouse, rat

Cited Species:

human

Positive Controls:

WB : BxPC-3 cells,

IHC : human endometrial cancer tissue,

Note-IHC: suggested antigen retrieval with TE buffer pH 9.0; (*) Alternatively, antigen retrieval may be performed with citrate buffer pH 6.0

Background Information

YPEL3 is part of a five-member family of closely related paralogues: YPEL1-5, which are named in reference to their Drosophila orthologue. Studies showed that YPEL3 is regulated by p53 and its encoding protein induces cellular senescence in human tumor and normal cells, indicating that YPEL3 is a p53-dependent, tumor suppressor gene. (PMID:20388804) 15403-1-AP was raised against full length of YPEL3 protein (1-119aa); it can recognize YPEL1-4.

Notable Publications

Author	Pubmed ID	Journal	Application
Hyoung-Seok Baek	34675221	Sci Rep	WB,IF
Qing Liu	36911393	Front Genet	IHC
Tuttle Rebecca R	21671470	Int J Cancer	WB

Storage

Storage:

Store at -20°C. Stable for one year after shipment.

Storage Buffer:

PBS with 0.02% sodium azide and 50% glycerol pH 7.3.

Aliquoting is unnecessary for -20°C storage

*** 20ul sizes contain 0.1% BSA

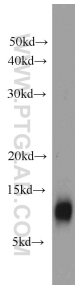
For technical support and original validation data for this product please contact:

T: 1 (888) 4PTGLAB (1-888-478-4522) (toll free in USA), or 1(312) 455-8498 (outside USA)

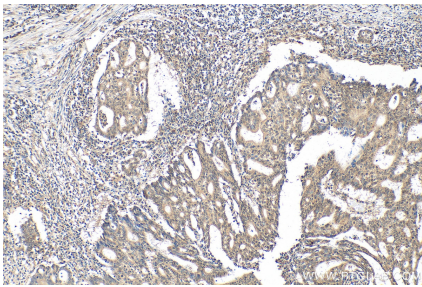
E: proteintech@ptglab.com
W: ptglab.com

This product is exclusively available under Proteintech Group brand and is not available to purchase from any other manufacturer.

Selected Validation Data



BxPC-3 cells were subjected to SDS PAGE followed by western blot with 15403-1-AP (YPEL3 antibody) at dilution of 1:1000 incubated at room temperature for 1.5 hours.



Immunohistochemical analysis of paraffin-embedded human endometrial cancer tissue slide using 15403-1-AP (YPEL3 antibody) at dilution of 1:200 (under 10x lens). Heat mediated antigen retrieval with Tris-EDTA buffer (pH 9.0).