

For Research Use Only

Bif-1 Polyclonal antibody

Catalog Number: 15422-1-AP

Featured Product

7 Publications



Basic Information

Catalog Number:

15422-1-AP

Size:

150ul, Concentration: 600 ug/ml by Nanodrop and 293 ug/ml by Bradford method using BSA as the standard;

Source:

Rabbit

Isotype:

IgG

Immunogen Catalog Number:

AG7710

GenBank Accession Number:

BC007455

GeneID (NCBI):

51100

UNIPROT ID:

Q9Y371

Full Name:

SH3-domain GRB2-like endophilin B1

Calculated MW:

41 kDa

Observed MW:

41 kDa

Purification Method:

Antigen affinity purification

Recommended Dilutions:

WB: 1:500-1:2000

IHC: 1:50-1:500

IF/ICC: 1:200-1:800

Applications

Tested Applications:

WB, IHC, IF/ICC, ELISA

Cited Applications:

WB, IHC, IF, ChIP

Species Specificity:

human, mouse, rat

Cited Species:

human, mouse, rat

Positive Controls:

WB : mouse kidney tissue, HEK-293 cells, HepG2 cells, human placenta tissue, mouse heart tissue, mouse placenta tissue

IHC : mouse kidney tissue, human kidney tissue, rat kidney tissue

IF/ICC : HepG2 cells,

Note-IHC: suggested antigen retrieval with TE buffer pH 9.0; (*) Alternatively, antigen retrieval may be performed with citrate buffer pH 6.0

Background Information

SH3GLB1 also known as Bif-1, contains an N-terminal domain, a central coiled-coil region, and a C-terminal SH3 domain, but shares no significant homology with members of the Bcl-2 family. SH3GLB1 is involved in activation of caspase-dependent apoptosis by promoting BAX/BAK1 activation (PubMed:16227588).

Notable Publications

Author	Pubmed ID	Journal	Application
Yuequan Zhao	34188608	Mediators Inflamm	WB
Huixue Zhang	28977840	Oncotarget	WB
Chia-Hung Chien	35831908	J Exp Clin Cancer Res	WB

Storage

Storage:

Store at -20°C. Stable for one year after shipment.

Storage Buffer:

PBS with 0.02% sodium azide and 50% glycerol, pH7.3

Aliquoting is unnecessary for -20°C storage

*** 20ul sizes contain 0.1% BSA

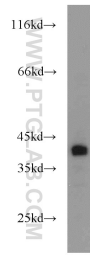
For technical support and original validation data for this product please contact:

T: 1 (888) 4PTGLAB (1-888-478-4522) (toll free in USA), or 1(312) 455-8498 (outside USA)

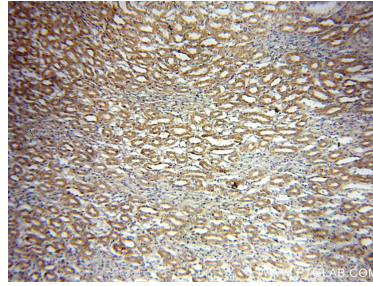
E: proteintech@ptglab.com
W: ptglab.com

This product is exclusively available under Proteintech Group brand and is not available to purchase from any other manufacturer.

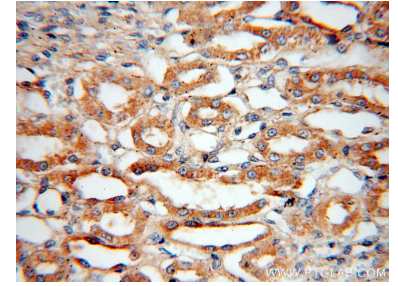
Selected Validation Data



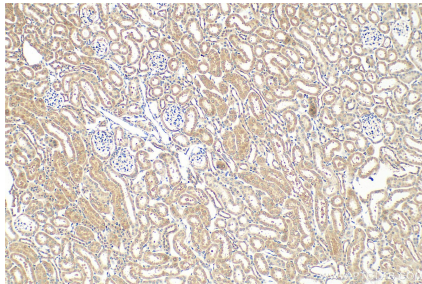
mouse kidney tissue were subjected to SDS PAGE followed by western blot with 15422-1-AP (Bif-1 antibody) at dilution of 1:1000 incubated at room temperature for 1.5 hours.



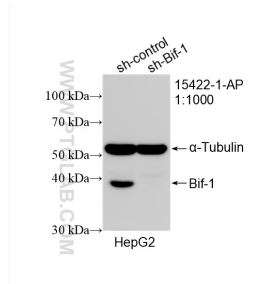
Immunohistochemical analysis of paraffin-embedded human kidney using 15422-1-AP (Bif-1 antibody) at dilution of 1:100 (under 10x lens).



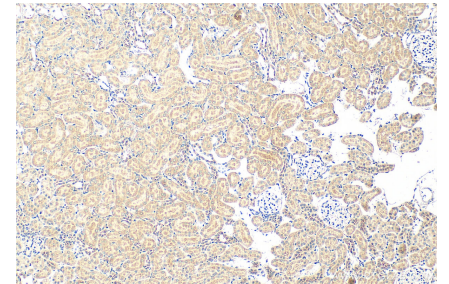
Immunohistochemical analysis of paraffin-embedded human kidney using 15422-1-AP (Bif-1 antibody) at dilution of 1:100 (under 40x lens).



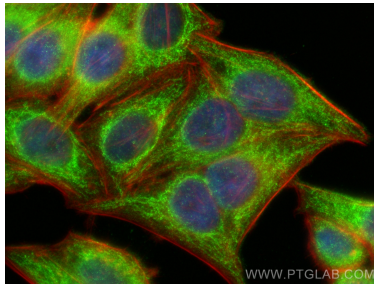
Immunohistochemical analysis of paraffin-embedded mouse kidney tissue slide using 15422-1-AP (Bif-1 antibody) at dilution of 1:200 (under 10x lens). Heat mediated antigen retrieval with Tris-EDTA buffer (pH 9.0).



WB result of Bif-1 antibody (15422-1-AP; 1:1000; incubated at room temperature for 1.5 hours) with sh-Control and sh-Bif-1 transfected HepG2 cells.



Immunohistochemical analysis of paraffin-embedded rat kidney tissue slide using 15422-1-AP (Bif-1 antibody) at dilution of 1:200 (under 10x lens). Heat mediated antigen retrieval with Tris-EDTA buffer (pH 9.0).



Immunofluorescent analysis of (4% PFA) fixed HepG2 cells using Bif-1 antibody (15422-1-AP) at dilution of 1:400 and Multi-rAb CoraLite® Plus 488-Goat Anti-Rabbit Recombinant Secondary Antibody (H+L) (RGAR002), CL594-phalloidin (red).