

For Research Use Only

MSH2 Polyclonal antibody

Catalog Number: 15520-1-AP

Featured Product

30 Publications



Basic Information

Catalog Number:

15520-1-AP

Size:

150ul, Concentration: 500 ug/ml by Nanodrop;

Source:

Rabbit

Isotype:

IgG

Immunogen Catalog Number:

AG7835

GenBank Accession Number:

BC021566

GeneID (NCBI):

4436

UNIPROT ID:

P43246

Full Name:

mutS homolog 2, colon cancer, nonpolyposis type 1 (E. coli)

Calculated MW:

105 kDa

Observed MW:

100 kDa-105 kDa

Purification Method:

Antigen affinity purification

Recommended Dilutions:

WB 1:500-1:2000

IP 0.5-4.0 ug for 1.0-3.0 mg of total protein lysate

IHC 1:50-1:500

IF/ICC 1:400-1:1600

Applications

Tested Applications:

WB, IHC, IF/ICC, FC (Intra), IP, ELISA

Cited Applications:

WB, IHC, IF, IP

Species Specificity:

human

Cited Species:

human, mouse

Positive Controls:

WB : HeLa cells, Caco-2 cells, SW480 cells

IP : HeLa cells,

IHC : human stomach cancer tissue, human tonsil tissue

IF/ICC : HeLa cells,

FC (Intra) : HeLa cells,

Note-IHC: suggested antigen retrieval with TE buffer pH 9.0; (*) Alternatively, antigen retrieval may be performed with citrate buffer pH 6.0

Background Information

MSH2, named for its homologous to the E.coli MutS gene, takes part in DNA mismatch repair(MMR) to maintain the stability of DNA. MSH2 contains a helix-turn-helix domain, which responds for binding to DNA. Also, MSH2 has a direct role in mutation avoidance and micro-satellite stability in cell.

Notable Publications

Author	Pubmed ID	Journal	Application
Bin Zhang	32964498	Neurochem Res	IHC
Dazhang Bai	33949657	Hum Mol Genet	WB, IHC
Thuy Thi Nguyen	25788166	Virchows Arch	IHC

Storage

Storage:

Store at -20°C. Stable for one year after shipment.

Storage Buffer:

PBS with 0.02% sodium azide and 50% glycerol, pH7.3

Aliquoting is unnecessary for -20°C storage

*** 20ul sizes contain 0.1% BSA

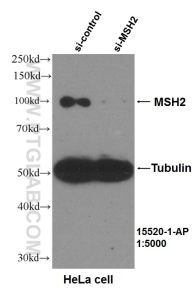
For technical support and original validation data for this product please contact:

T: 1 (888) 4PTGLAB (1-888-478-4522) (toll free in USA), or 1(312) 455-8498 (outside USA)

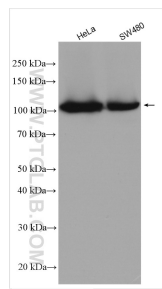
E: proteintech@ptglab.com
W: ptglab.com

This product is exclusively available under Proteintech Group brand and is not available to purchase from any other manufacturer.

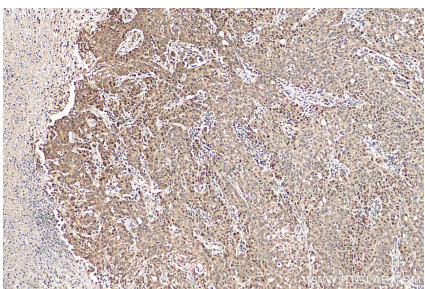
Selected Validation Data



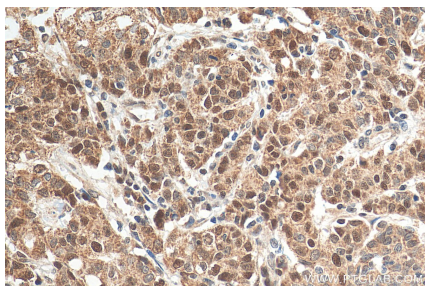
WB results of MSH2 (15520-1-AP, 1:5000) antibody with si-Control and si-MSH2 transfected HeLa cells..



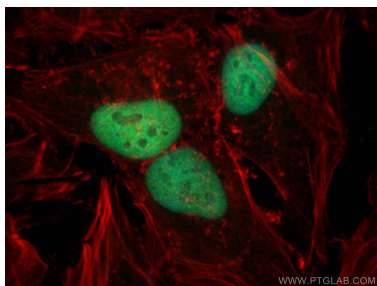
Various lysates were subjected to SDS PAGE followed by western blot with 15520-1-AP (MSH2 antibody) at dilution of 1:1000 incubated at room temperature for 1.5 hours.



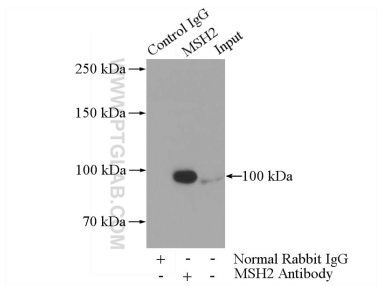
Immunohistochemical analysis of paraffin-embedded human stomach cancer tissue slide using 15520-1-AP (MSH2 antibody) at dilution of 1:200 (under 10x lens). Heat mediated antigen retrieval with Tris-EDTA buffer (pH 9.0).



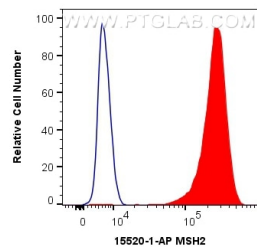
Immunohistochemical analysis of paraffin-embedded human stomach cancer tissue slide using 15520-1-AP (MSH2 antibody) at dilution of 1:200 (under 40x lens). Heat mediated antigen retrieval with Tris-EDTA buffer (pH 9.0).



Immunofluorescent analysis of (4% PFA) fixed HeLa cells using MSH2 antibody (15520-1-AP) at dilution of 1:800 and Multi-rAb CoraLite® Plus 488-Goat Anti-Rabbit Recombinant Secondary Antibody (H+L) (RGAR002), CL594-Phalloidin (red).



IP result of anti-MSH2 (IP:15520-1-AP, 5ug; Detection:15520-1-AP 1:500) with HeLa cells lysate 2000ug.



1X10⁶ HeLa cells were intracellularly stained with 0.4 ug Anti-Human MSH2 (15520-1-AP) and CoraLite® 488-Conjugated AffiniPure Goat Anti-Rabbit IgG(H+L) at dilution 1:1000 (red), or 0.4 ug Isotype Control. Cells were fixed and permeabilized with Transcription Factor Staining Buffer Kit (PF00011).