

For Research Use Only

NDUFB10 Polyclonal antibody

Catalog Number: 15589-1-AP

Featured Product

7 Publications



Basic Information

Catalog Number:

15589-1-AP

Size:

150ul , Concentration: 450 µg/ml by Nanodrop and 180 µg/ml by Bradford method using BSA as the standard;

Source:

Rabbit

Isotype:

IgG

Immunogen Catalog Number:

AG7922

GenBank Accession Number:

BC005829

GeneID (NCBI):

4716

Full Name:

NADH dehydrogenase (ubiquinone) 1 beta subcomplex, 10, 22kDa

Calculated MW:

22 kDa

Observed MW:

22 kDa

Purification Method:

Antigen affinity purification

Recommended Dilutions:

WB 1:500-1:2000

IP 0.5-4.0 ug for IP and 1:500-1:2000 for WB

IHC 1:20-1:200

Applications

Tested Applications:

IHC, IP, WB, ELISA

Cited Applications:

WB

Species Specificity:

human, mouse, rat

Cited Species:

human, mouse

Note-IHC: suggested antigen retrieval with TE buffer pH 9.0; (*) Alternatively, antigen retrieval may be performed with citrate buffer pH 6.0

Positive Controls:

WB : HepG2 cells, human skeletal muscle tissue, mouse liver tissue

IP : HepG2 cells,

IHC : human liver tissue, human brain tissue, human heart tissue, human kidney tissue, human ovary tissue, human placenta tissue, human skin tissue, human spleen tissue

Background Information

NDUFB10(NADH dehydrogenase [ubiquinone] 1 beta subcomplex subunit 10) is also named as PDSW and belongs to the complex I NDUFB10 subunit family. It is an accessory subunit of the mitochondrial membrane respiratory chain NADH dehydrogenase (Complex I), that is believed not to be involved in catalysis. The Complex I functions in the transfer of electrons from NADH to the respiratory chain.

Notable Publications

Author	Pubmed ID	Journal	Application
Sana Siddiqui	28260693	Aging (Albany NY)	WB
Jin Zhang	27320042	Cell Stem Cell	WB
Bronwen Martin	26834700	Front Endocrinol (Lausanne)	WB

Storage

Storage:

Store at -20°C. Stable for one year after shipment.

Storage Buffer:

PBS with 0.02% sodium azide and 50% glycerol pH 7.3.

Aliquoting is unnecessary for -20°C storage

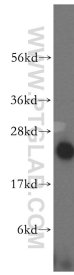
For technical support and original validation data for this product please contact:

T: 1 (888) 4PTGLAB (1-888-478-4522) (toll free in USA), or 1(312) 455-8498 (outside USA)

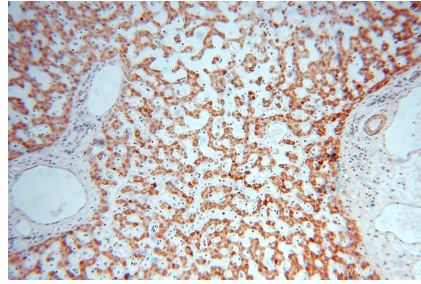
E: proteintech@ptglab.com
W: ptglab.com

This product is exclusively available under Proteintech Group brand and is not available to purchase from any other manufacturer.

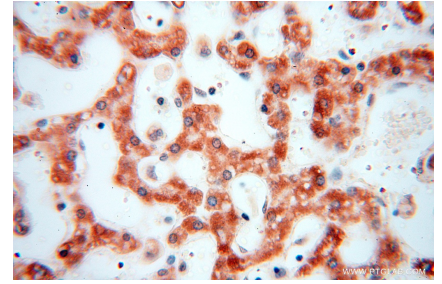
Selected Validation Data



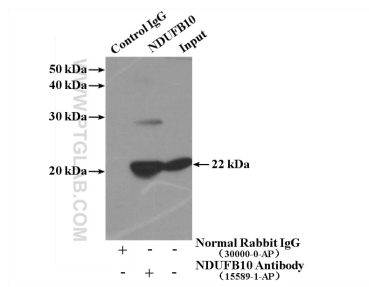
HepG2 cells were subjected to SDS PAGE followed by western blot with 15589-1-AP (NDUFB10 antibody) at dilution of 1:500 incubated at room temperature for 1.5 hours.



Immunohistochemical analysis of paraffin-embedded human liver using 15589-1-AP (NDUFB10 antibody) at dilution of 1:50 (under 10x lens).



Immunohistochemical analysis of paraffin-embedded human liver using 15589-1-AP (NDUFB10 antibody) at dilution of 1:50 (under 40x lens).



IP Result of anti-NDUFB10 (IP:15589-1-AP, 4ug; Detection:15589-1-AP 1:1000) with HepG2 cells lysate 1000ug.