

For Research Use Only

REXO2 Polyclonal antibody

Catalog Number: 15598-1-AP



Basic Information

Catalog Number: 15598-1-AP	GenBank Accession Number: BC003502	Purification Method: Antigen affinity purification
Size: 150ul , Concentration: 200 µg/ml by Nanodrop and 133 µg/ml by Bradford method using BSA as the standard;	GeneID (NCBI): 25996	Recommended Dilutions: WB 1:500-1:1000 IHC 1:20-1:200
Source: Rabbit	Full Name: REX2, RNA exonuclease 2 homolog (S. cerevisiae)	
Isotype: IgG	Calculated MW: 27 kDa	
Immunogen Catalog Number: AG7976	Observed MW: 27-30 kDa	

Applications

Tested Applications:

IHC, WB, ELISA

Species Specificity:

human, mouse, rat

Note-IHC: suggested antigen retrieval with TE buffer pH 9.0; (*) Alternatively, antigen retrieval may be performed with citrate buffer pH 6.0

Positive Controls:

WB : mouse liver tissue, L02 cells

IHC : human placenta tissue, human heart tissue

Background Information

Storage

Storage:

Store at -20°C. Stable for one year after shipment.

Storage Buffer:

PBS with 0.02% sodium azide and 50% glycerol pH 7.3.

Aliquoting is unnecessary for -20°C storage

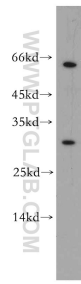
For technical support and original validation data for this product please contact:

T: 1 (888) 4PTGLAB (1-888-478-4522) (toll free in USA), or 1(312) 455-8498 (outside USA)

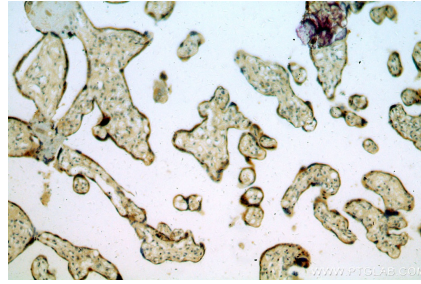
E: proteintech@ptglab.com
W: ptglab.com

This product is exclusively available under Proteintech Group brand and is not available to purchase from any other manufacturer.

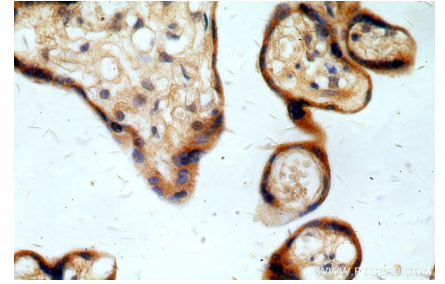
Selected Validation Data



mouse liver tissue were subjected to SDS PAGE followed by western blot with 15598-1-AP (REXO2 antibody) at dilution of 1:300 incubated at room temperature for 1.5 hours.



Immunohistochemical analysis of paraffin-embedded human placenta using 15598-1-AP (REXO2 antibody) at dilution of 1:50 (under 10x lens).



Immunohistochemical analysis of paraffin-embedded human placenta using 15598-1-AP (REXO2 antibody) at dilution of 1:50 (under 40x lens).