

For Research Use Only

POM121 Polyclonal antibody

Catalog Number: 15645-1-AP

Featured Product

8 Publications



Basic Information

Catalog Number:

15645-1-AP

Size:

150ul, Concentration: 600 ug/ml by Nanodrop and 287 ug/ml by Bradford method using BSA as the standard;

Source:

Rabbit

Isotype:

IgG

Immunogen Catalog Number:

AG8177

GenBank Accession Number:

BC008794

GeneID (NCBI):

9883

UNIPROT ID:

Q96HA1

Full Name:

POM121 membrane glycoprotein (rat)

Calculated MW:

984 aa, 99 kDa

Observed MW:

140-150 kDa

Purification Method:

Antigen affinity purification

Recommended Dilutions:

WB 1:1000-1:4000

IHC 1:50-1:500

IF-P 1:50-1:500

IF/ICC 1:200-1:800

Applications

Tested Applications:

WB, IHC, IF/ICC, IF-P, ELISA

Cited Applications:

WB, IHC, IF

Species Specificity:

human, mouse, rat

Cited Species:

human

Positive Controls:

WB : HeLa cells,

IHC : human colon tissue,

IF-P : mouse brain tissue,

IF/ICC : HCT 116 cells,

Note-IHC: suggested antigen retrieval with TE buffer pH 9.0; (*) Alternatively, antigen retrieval may be performed with citrate buffer pH 6.0

Background Information

POM121 is an integral membrane protein that localizes to the central spoke ring complex and participates in anchoring the nuclear pore complex to the nuclear envelope. Catalog#15645-1-AP do well in identifying the nuclear envelope in immunofluorescence experiments.

Notable Publications

Author	Pubmed ID	Journal	Application
Yen-Chen Lin	34059832	Nat Neurosci	IF
Lirong Guan	34151840	Cancer Biomark	IHC, WB
Belén Lizcano-Perret	36508477	PLoS Pathog	IF

Storage

Storage:

Store at -20°C. Stable for one year after shipment.

Storage Buffer:

PBS with 0.02% sodium azide and 50% glycerol pH 7.3.

Aliquoting is unnecessary for -20°C storage

*** 20ul sizes contain 0.1% BSA

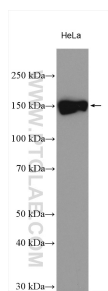
For technical support and original validation data for this product please contact:

T: 1 (888) 4PTGLAB (1-888-478-4522) (toll free in USA), or 1(312) 455-8498 (outside USA)

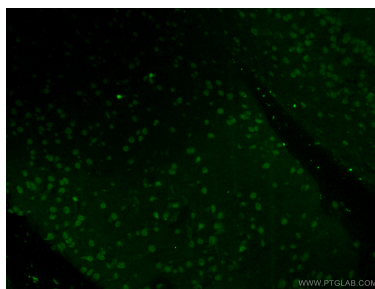
E: proteintech@ptglab.com
W: ptglab.com

This product is exclusively available under Proteintech Group brand and is not available to purchase from any other manufacturer.

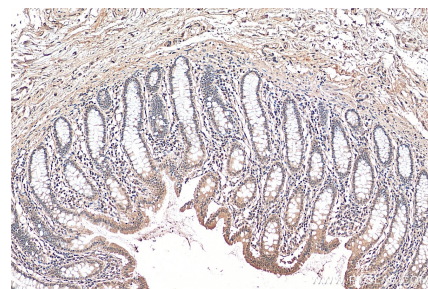
Selected Validation Data



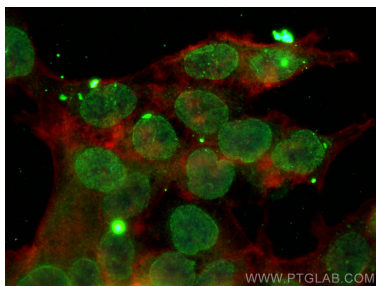
HeLa cells were subjected to SDS PAGE followed by western blot with 15645-1-AP (POM121 antibody) at dilution of 1:2000 incubated at room temperature for 1.5 hours.



Immunofluorescent analysis of (4% PFA) fixed mouse brain tissue using 15645-1-AP (POM121 antibody) at dilution of 1:200 and Alexa Fluor 488-Conjugated AffiniPure Goat Anti-Rabbit IgG(H+L).



Immunohistochemical analysis of paraffin-embedded human colon tissue slide using 15645-1-AP (POM121 antibody) at dilution of 1:200 (under 10x lens). Heat mediated antigen retrieval with Tris-EDTA buffer (pH 9.0).



Immunofluorescent analysis of (4% PFA) fixed HCT 116 cells using POM121 antibody (15645-1-AP) at dilution of 1:400 and CoraLite® 488-Conjugated AffiniPure Goat Anti-Rabbit IgG(H+L) (SA00013-2), CL594-Phalloidin (red).