

CLPP

Polyclonal ANTIBODY

Catalog Number: 15698-1-AP

10 Publications

Basic Information

Catalog Number:
15698-1-AP

Size:
40 µg/150 µl

Source:
Rabbit

Isotype:
IgG

Purification Method:
Antigen affinity purification

Immunogen Catalog Number:
AG3325

GenBank Accession Number:
BC002956

GeneID (NCBI):
8192

Full Name:
ClpP caseinolytic peptidase, ATP-dependent, proteolytic subunit homolog (E. coli)

Calculated MW:
30 kDa

Observed MW:
26 kDa; 30 kDa

Recommended Dilutions:

WB 1:1000-1:8000

IP 0.5-4.0 µg for IP and 1:500-1:1000 for WB

IHC 1:100-1:400

IF 1:10-1:100

Applications

Tested Applications:
IF, IHC, IP, WB, ELISA

Cited Applications:
WB

Species Specificity:
human, mouse, rat

Cited Species:
human, mouse, rat, zebrafish

Note: suggested antigen retrieval with TE buffer pH 9.0; (*) Alternatively, antigen retrieval may be performed with citrate buffer pH 6.0

Positive Controls:

WB: human placenta tissue; rat heart tissue, K-562 cells, mouse heart tissue

IP: mouse skeletal muscle tissue;

IHC: human liver cancer tissue; human pancreas tissue, human kidney tissue, human testis tissue, human skin tissue, human liver tissue, human ovary tissue

IF: HeLa cells;

Background Information

CLPP is the putative ATP-dependent Clp protease proteolytic subunit and also named as endopeptidase Clp. It belongs to the peptidase S14 family. Clp cleaves peptides in various proteins in a process that requires ATP hydrolysis. It may be responsible for a fairly general and central housekeeping function rather than for the degradation of specific substrates. This protein has a transit peptide of 56 amino acid.

Notable Publications

Author	Pubmed ID	Journal	Application
Uwe Richter	26504172	J Cell Biol	WB
Peng Wang	31100073	PLoS Genet	WB
Danni Chen	30916346	Nucleic Acids Res	WB

Storage

Storage:

Store at -20°C. Stable for one year after shipment.

Storage Buffer:

PBS with 0.02% sodium azide and 50% glycerol pH 7.3.

Aliquoting is unnecessary for -20°C storage

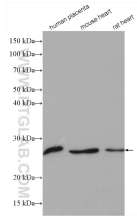
For technical support and original validation data for this product please contact:

T: 1 (888) 4PTGLAB (1-888-478-4522) (toll free in USA), or 1(312) 455-8498 (outside USA)

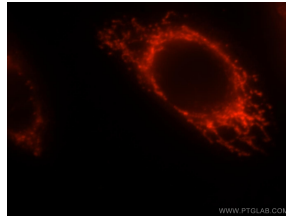
E: proteintech@ptglab.com
W: ptglab.com

This product is exclusively available under Proteintech Group brand and is not available to purchase from any other manufacturer.

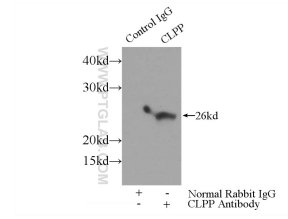
Selected Validation Data



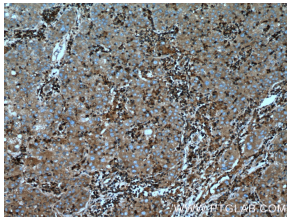
Various lysates were subjected to SDS PAGE followed by western blot with 15698-1-AP (CLPP antibody) at dilution of 1:4000 incubated at room temperature for 1.5 hours



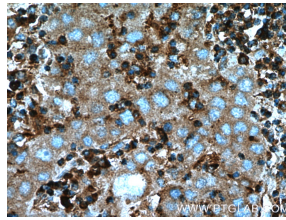
Immunofluorescent analysis of HeLa cells, using CLPP antibody 15698-1-AP at 1:25 dilution and Rhodamine-labeled goat anti-rabbit IgG (red).



IP Result of anti-CLPP (IP:15698-1-AP, 3ug; Detection: 15698-1-AP 1:500) with mouse skeletal muscle tissue lysate 4000ug.



Immunohistochemical analysis of paraffin-embedded human liver cancer tissue slide using 15698-1-AP (CLPP Antibody) at dilution of 1:200 (under 10x lens), heat mediated antigen retrieved with Tris-EDTA buffer(pH9).



Immunohistochemical analysis of paraffin-embedded human liver cancer tissue slide using 15698-1-AP (CLPP Antibody) at dilution of 1:200 (under 40x lens), heat mediated antigen retrieved with Tris-EDTA buffer(pH9).