

For Research Use Only

# IGFBP2 Polyclonal ANTIBODY

Catalog Number: 15699-1-AP



## Basic Information

**Catalog Number:**

15699-1-AP

**Size:**

150UL, Concentration: 160 µg/ml by Bradford method using BSA as the standard;

**Source:**

Rabbit

**Isotype:**

IgG

**Immunogen Catalog Number:**

AG8327

**GenBank Accession Number:**

BC004312

**GeneID (NCBI):**

3485

**Full Name:**

IGF binding protein 2

**Calculated MW:**

36 kDa

**Observed MW:**

32 kDa

**Purification Method:**

Antigen affinity purification

**Recommended Dilutions:**

WB 1:500-1:1000

IHC 1:50-1:500

IF 1:10-1:100

## Applications

**Tested Applications:**

IF, IHC, WB, ELISA

**Species Specificity:**

human

**Note-IHC: suggested antigen retrieval with TE buffer pH 9.0; (\*) Alternatively, antigen retrieval may be performed with citrate buffer pH 6.0**

**Positive Controls:**

WB: MCF-7 cells, PC-3 cells

IHC: human breast cancer tissue, human prostate cancer tissue, human gliomas tissue

IF: HeLa cells,

## Background Information

Insulin-like growth factors (IGFs) and their binding proteins (IGFBPs) have important metabolic roles in the human body. IGFBP-2 is a 34 kD IGFBP protein with degraded fragments of 24 kD, 19kD and 15kD. The levels of IGFBP2 are elevated during progression of many human cancers. IGFBP2 is expressed in invasive PAC, whereas its expression in HG-PIN is low. It can be as an Immunohistochemical Marker for Prostatic Adenocarcinoma.

## Storage

**Storage:**

Store at -20°C. Stable for one year after shipment.

**Storage Buffer:**

PBS with 0.02% sodium azide and 50% glycerol pH 7.3.

Aliquoting is unnecessary for -20°C storage

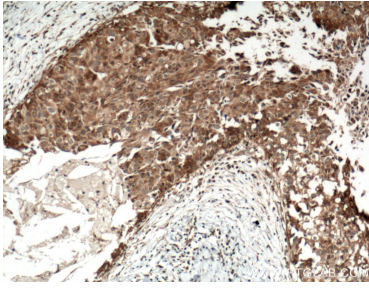
For technical support and original validation data for this product please contact:

T: 1 (888) 4PTGLAB (1-888-478-4522) (toll free in USA), or 1(312) 455-8498 (outside USA)

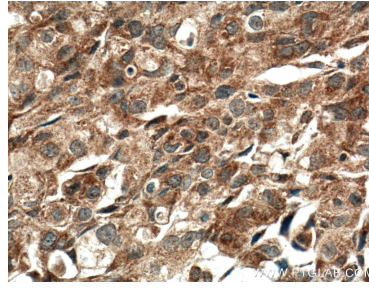
E: proteintech@ptglab.com  
W: ptglab.com

**This product is exclusively available under Proteintech Group brand and is not available to purchase from any other manufacturer.**

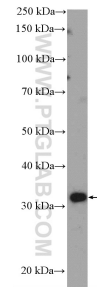
## Selected Validation Data



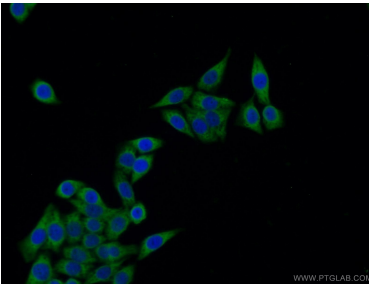
Immunohistochemical analysis of paraffin-embedded human breast cancer tissue slide using 15699-1-AP (IGFBP2 antibody) at dilution of 1:100 (under 10x lens. Heat mediated antigen retrieval with Tris-EDTA buffer (pH 9.0)).



Immunohistochemical analysis of paraffin-embedded human breast cancer tissue slide using 15699-1-AP (IGFBP2 antibody) at dilution of 1:100 (under 40x lens. Heat mediated antigen retrieval with Tris-EDTA buffer (pH 9.0)).



MCF-7 cells were subjected to SDS PAGE followed by western blot with 15699-1-AP (IGFBP2 Antibody) at dilution of 1:600 incubated at room temperature for 1.5 hours.



Immunofluorescent analysis of HeLa cells using 15699-1-AP (IGFBP2 antibody) at dilution of 1:25 and Alexa Fluor 488-conjugated AffiniPure Goat Anti-Rabbit IgG(H+L).