

For Research Use Only

CRTAP Polyclonal antibody

Catalog Number: 15724-1-AP

Featured Product

2 Publications



Basic Information

Catalog Number:

15724-1-AP

Size:

150ul, Concentration: 550 ug/ml by Nanodrop and 280 ug/ml by Bradford method using BSA as the standard;

Source:

Rabbit

Isotype:

IgG

Immunogen Catalog Number:

AG8459

GenBank Accession Number:

BC008745

GeneID (NCBI):

10491

UNIPROT ID:

O75718

Full Name:

cartilage associated protein

Calculated MW:

46.5 kDa

Observed MW:

43-47 kDa

Purification Method:

Antigen affinity purification

Recommended Dilutions:

WB 1:1000-1:4000

IP 0.5-4.0 ug for 1.0-3.0 mg of total protein lysate

IHC 1:50-1:500

IF/ICC 1:50-1:500

Applications

Tested Applications:

WB, IHC, IF/ICC, IP, ELISA

Cited Applications:

WB, IHC

Species Specificity:

human, mouse, rat

Cited Species:

human

Note-IHC: suggested antigen retrieval with TE buffer pH 9.0; (*) Alternatively, antigen retrieval may be performed with citrate buffer pH 6.0

Positive Controls:

WB : HT-1080 cells, HEK-293 cells, HeLa cells, human colon tissue, human stomach tissue, NIH/3T3 cells, ROS1728 cells

IP : HEK-293 cells,

IHC : human kidney tissue,

IF/ICC : HeLa cells,

Notable Publications

Author	Pubmed ID	Journal	Application
Wenguo Li	39245686	Nat Commun	WB
Liangshun Zhang	38114688	Med Oncol	IHC

Storage

Storage:

Store at -20°C. Stable for one year after shipment.

Storage Buffer:

PBS with 0.02% sodium azide and 50% glycerol, pH7.3

Aliquoting is unnecessary for -20°C storage

*** 20ul sizes contain 0.1% BSA

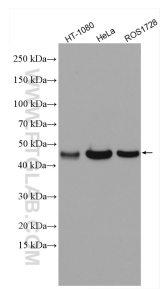
For technical support and original validation data for this product please contact:

T: 1 (888) 4PTGLAB (1-888-478-4522) (toll free in USA), or 1(312) 455-8498 (outside USA)

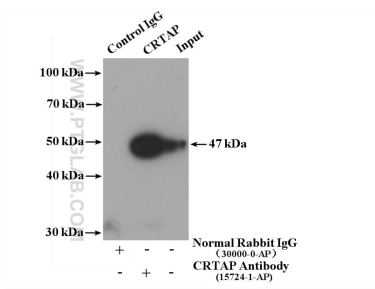
E: proteintech@ptglab.com
W: ptglab.com

This product is exclusively available under Proteintech Group brand and is not available to purchase from any other manufacturer.

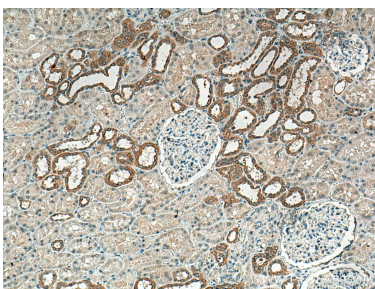
Selected Validation Data



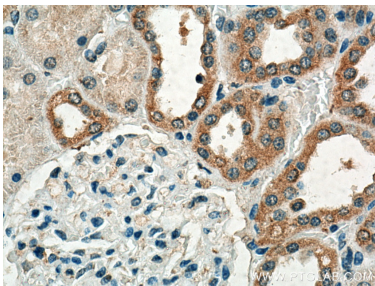
Various lysates were subjected to SDS PAGE followed by western blot with 15724-1-AP (CRTAP antibody) at dilution of 1:2000 incubated at room temperature for 1.5 hours.



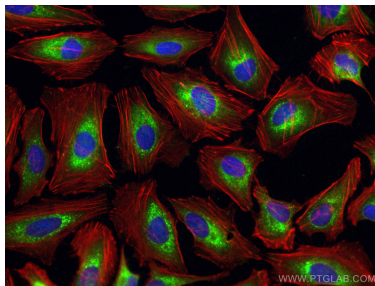
IP result of anti-CRTAP (IP:15724-1-AP, 4ug; Detection:15724-1-AP 1:500) with HEK-293 cells lysate 3000 ug.



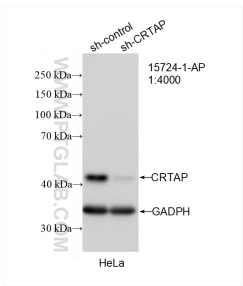
Immunohistochemical analysis of paraffin-embedded human kidney tissue slide using 15724-1-AP (CRTAP antibody) at dilution of 1:200 (under 10x lens). Heat mediated antigen retrieval with Tris-EDTA buffer (pH 9.0).



Immunohistochemical analysis of paraffin-embedded human kidney tissue slide using 15724-1-AP (CRTAP antibody) at dilution of 1:200 (under 40x lens). Heat mediated antigen retrieval with Tris-EDTA buffer (pH 9.0).



Immunofluorescent analysis of (-20°C Ethanol) fixed HeLa cells using CRTAP antibody (15724-1-AP) at dilution of 1:200 and CoraLite®488-Conjugated AffiniPure Goat Anti-Rabbit IgG(H+L). F-actin was stained using CL594-phalloidin (red) and DNA was stained by DAPI (blue).



WB result of CRTAP antibody (15724-1-AP; 1:4000; incubated at room temperature for 1.5 hours) with sh-Control and sh-CRTAP transfected HeLa cells.