

For Research Use Only

C1QL1 Polyclonal antibody

Catalog Number: 15757-1-AP



Basic Information

Catalog Number: 15757-1-AP	GenBank Accession Number: BC008798	Purification Method: Antigen affinity purification
Size: 150ul , Concentration: 400 ug/ml by Nanodrop;	GeneID (NCBI): 10882	Recommended Dilutions: WB 1:1000-1:4000
Source: Rabbit	UNIPROT ID: O75973	IHC 1:50-1:500
Isotype: IgG	Full Name: complement component 1, q subcomponent-like 1	IF-P 1:50-1:500
Immunogen Catalog Number: AG8348	Calculated MW: 258 aa, 26 kDa	
	Observed MW: 30 kDa	

Applications

Tested Applications: WB, IHC, IF-P, ELISA	Positive Controls:
Species Specificity: human, mouse, rat	WB : mouse brain tissue, rat brain tissue
Note-IHC: suggested antigen retrieval with TE buffer pH 9.0; (*) Alternatively, antigen retrieval may be performed with citrate buffer pH 6.0	IHC : mouse cerebellum tissue,
	IF-P : mouse cerebellum tissue,

Background Information

C1QL1 (complement component 1, q subcomponent-like 1) is one of the C1q/tumor-necrosis-factor-related protein (CTRP) family members. C1QL1 is synthesized and secreted mainly by the brain and adipose tissues. It is implicated in synapse formation or elimination in cultured hippocampal neurons in vitro.

Storage

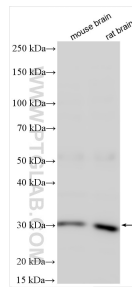
Storage:
Store at -20°C. Stable for one year after shipment.
Storage Buffer:
PBS with 0.02% sodium azide and 50% glycerol pH 7.3.
Aliquoting is unnecessary for -20°C storage

*** 20ul sizes contain 0.1% BSA

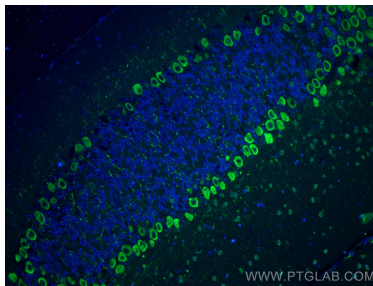
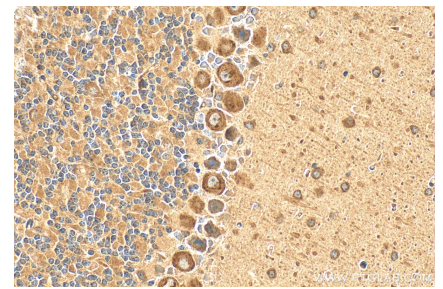
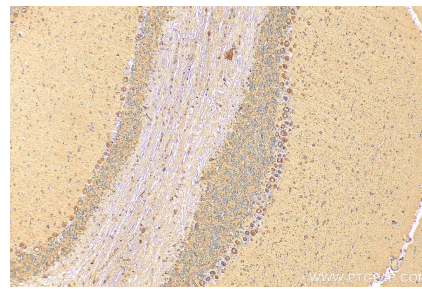
For technical support and original validation data for this product please contact:
T: 1 (888) 4PTGLAB (1-888-478-4522) (toll free in USA), or 1(312) 455-8498 (outside USA)
E: proteintech@ptglab.com
W: ptglab.com

This product is exclusively available under Proteintech Group brand and is not available to purchase from any other manufacturer.

Selected Validation Data



Various lysates were subjected to SDS PAGE followed by western blot with 15757-1-AP (C1QL1 antibody) at dilution of 1:2000 incubated at room temperature for 1.5 hours.



Immunofluorescent analysis of (4% PFA) fixed mouse cerebellum tissue using C1QL1 antibody (15757-1-AP) at dilution of 1:200 and CoraLite®488-Conjugated Goat Anti-Rabbit IgG(H+L).