

For Research Use Only

POLR2L Polyclonal antibody

Catalog Number: 15779-1-AP



Basic Information

Catalog Number:

15779-1-AP

Size:

150ul , Concentration: 293 µg/ml by Bradford method using BSA as the standard;

Source:

Rabbit

Isotype:

IgG

Immunogen Catalog Number:

AG8468

GenBank Accession Number:

BC005903

GeneID (NCBI):

5441

Full Name:

polymerase (RNA) II (DNA directed) polypeptide L, 7.6kDa

Calculated MW:

67 aa, 8 kDa

Observed MW:

8 kDa

Purification Method:

Antigen affinity purification

Recommended Dilutions:

WB 1:500-1:2000

Applications

Tested Applications:

WB,ELISA

Species Specificity:

human, mouse, rat

Positive Controls:

WB : Raji cells, HeLa cells

Background Information

Storage

Storage:

Store at -20°C. Stable for one year after shipment.

Storage Buffer:

PBS with 0.02% sodium azide and 50% glycerol pH 7.3.

Aliquoting is unnecessary for -20°C storage

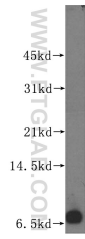
For technical support and original validation data for this product please contact:

T: 1 (888) 4PTGLAB (1-888-478-4522) (toll free in USA), or 1(312) 455-8498 (outside USA)

E: proteintech@ptglab.com
W: ptglab.com

This product is exclusively available under Proteintech Group brand and is not available to purchase from any other manufacturer.

Selected Validation Data



Raji cells were subjected to SDS PAGE followed by western blot with 15779-1-AP (POLR2L antibody) at dilution of 1:400 incubated at room temperature for 1.5 hours.